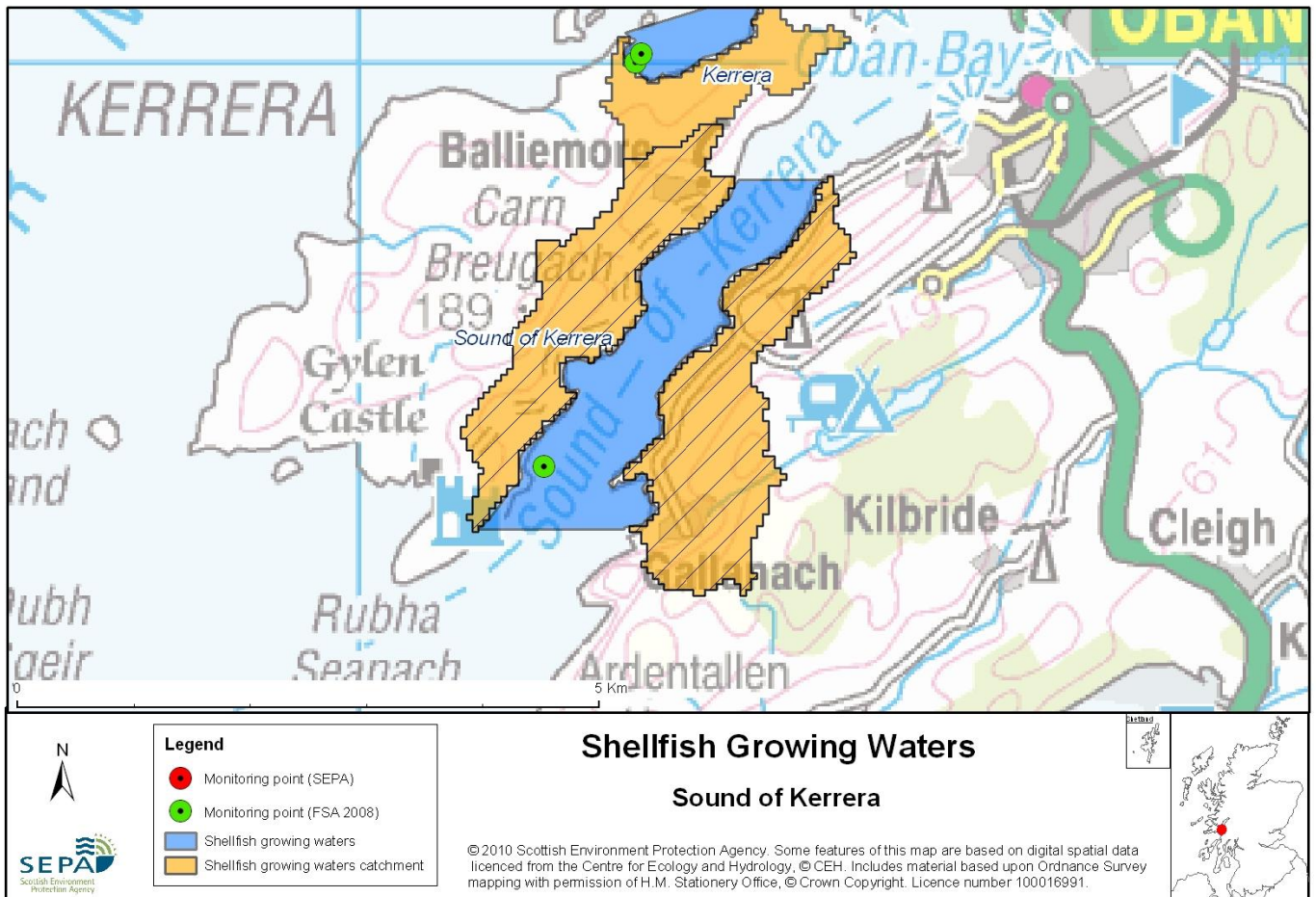


96 Sound of Kerrera



Name	Sound of Kerrera
Report Reference Number	96
WFD Code	UKS7992396
Local Information	An area bounded by lines drawn between NM8400729000 and NM8326329000 and between NM8103526000 and NM8228126000, and extending to MHWS.
Designated Area (km ²)	2.68
Year of Designation	2002
Sampling Points	Sound of Kerrera - NM 83461 28343
Commencement of Monitoring	2003

96.1 Commercial Shellfish Interests

Most of the Sound of Kerrera designated Shellfish Area lies within a Shellfish Harvesting Area, designated by the Food Standards Agency (FSA), for the production of Common mussels (*Mytilus edulis*).

Sound of Kerrera: Cutter Rock (common mussels)
2011 = A - April to September
 No classification – October to December
2012 = No classification - January & February
 A - March

Category A sites are of the highest standard and means that shellfish can go directly for human consumption however category B requires that shellfish must be depurated, heat-treated or re-laid prior to human consumption.

FSA have not carried out a sanitary survey for Sound of Kerrera.

For more information on Food Standards Agency Classification please visit:

<http://www.food.gov.uk/scotland/safetyhygienescot/shellmonitorscot/shellclassesscot/>

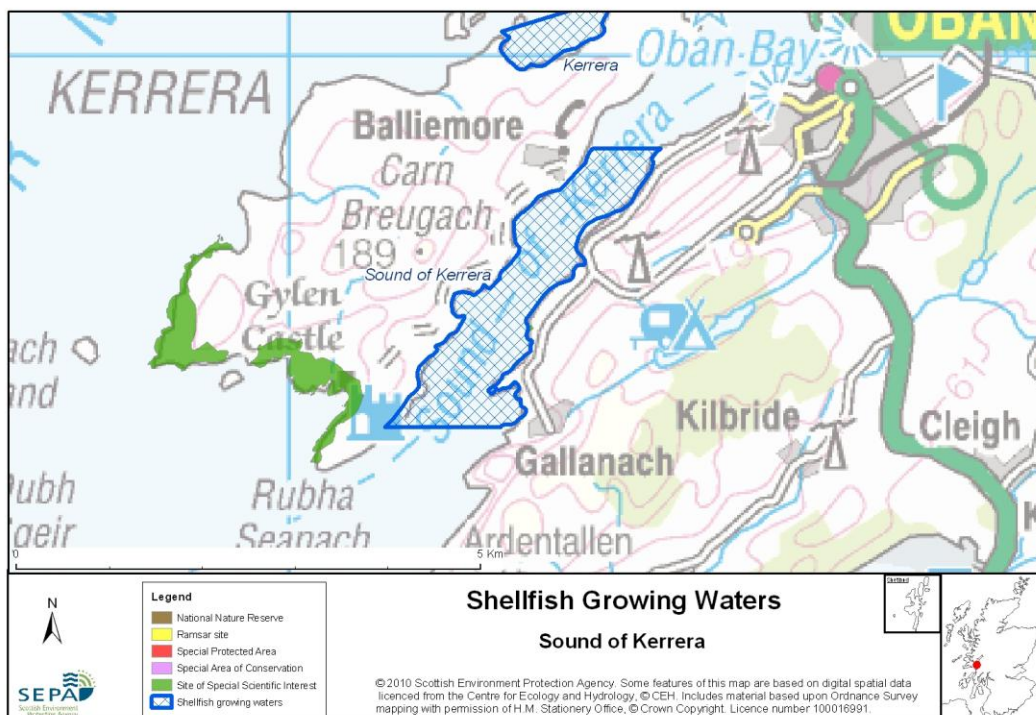
96.2 Bathymetric Information

This area of water is located just south of Oban and forms a channel between Kerrera and mainland Scotland. It is sheltered by surrounding landmasses, however it can be subject to south and south-westerly winds. The length of the growing water is 3km with a maximum depth of approximately 61m. There are no morphological pressures on the waters.

96.3 Conservation Designations

Kerrera designated Shellfish Waters ([UKS7992355](#)) is North of the Sound of Kerrera. Kerrera is also designated as A Shellfish Harvesting Area by the FSA.

Sites of Special Scientific Interest (SSSI) – [South Kerrera and Gallanach](#)
Designated 21/12/1989 for Igneous petrology (Old Red Sandstone Igneous), Palaeontology (Silurian - Devonian Chordata), Quaternary geology and geomorphology of Scotland



96.4 Topography and Land Use – Potential Diffuse Pollution Sources

The land on either side of the Sound is of rough moorland, improved pasture, semi natural grassland and semi-natural woodland. The land is either permanent pasture or rough grazing and the agriculture is limited on the five known farms to fairly extensive beef and sheep production. There are no community settlements in the area, and Kerrera itself is sparsely populated. There is some ribbon development along the minor road from Oban to Gallanach. The area is a popular with tourists and there are a number of developments providing self-catering accommodation and other tourist facilities. There are several minor freshwater inputs to the designated area from the isle of Kerrera, all of which are considered to be of at least good quality although none are monitored by SEPA.

The designated area is less than 3km from Oban, a very popular tourist destination and the main population centre for the north of Argyll. The designated shellfish water may be at risk from inappropriate discharges to Oban Bay or to the catchment that discharges to Oban Bay.

96.5 Point Source Discharge

There are no consented discharges to the designated area from public sewage systems or private septic tanks. Within 2 km of the designated shellfish water is the treated discharge and storm sewage overflow from the Oban Wastewater Treatment Works. This STW receives waste water from a population equivalent of 26,600 and provides secondary treatment. There is a single consented discharge to the Sound of Kerrera from a private septic tank immediately outside the designated area.

There is one fish farm within the designated area at Port an t-Struthan.

Category	Name	Consent No.	NGR	Biomass (t)	Additional Information
Fish Farm	Port an t-Struthain (Cutter Rock, Kerrera C)	WPCW/30727	NM 8170 2680	500	-

There are no other industrial discharges within the shellfish water catchment area.

96.6 Compliance Monitoring Regime

The following monitoring regime of the designated area was implemented in July 2005.

Year	Monitoring Regime
2005 -	<ul style="list-style-type: none"> • Quarterly for Sal, DO, pH, temperature, visible oil • Every three years for metals and organohalogens in mussels, next scheduled collection 2011 • Quarterly for faecal coliforms in mussels

96.7 Compliance History

UKS7992396 - Sound of Kerrera				
	Compliance history for Waters and Biota, excluding faecal coliforms data			Compliance history for faecal coliforms
Year	Overall Result	Imperative	Guideline	Guideline
2003	Pass	Pass	Pass	Fail
2004	Pass	Pass	Pass	Fail
2005	Pass	Pass	Pass	Fail
2006	Pass	Pass	Pass	Fail
2007	Pass	Pass	Pass	Pass
2008	Pass	No Data	No Data	Pass
2009	Pass	Pass	Pass	Pass
2010	Pass	Pass	Pass	Pass

Of the six samples analysed for Faecal Coliforms in 2003 and 2004, three gave results above the Guideline standard. In 2005, all four samples gave results above the Guideline standard. The waters failed to comply with the guideline standard for faecal coliforms in 2006. The waters have passed from 2007 to 2010.

96.8 Future Monitoring

The monitoring regime (96.6 Compliance Monitoring Regime) will be followed. In the event of any chemistry parameter failing to meet any EQS, the site will be revisited and resampled for the failed parameter.

Samplers are asked to identify any evidence of visible harm to the shellfish population at the site.

96.9 Improvement Actions

Improvements were made to Oban's CSOs under Scottish Water's programme of infrastructure and investment. There are no further improvement actions planned for this area.

WFD Objectives

Under the Water Framework Directive, the target objectives expect this shellfish water to Pass by 2015 (first River Basin Management Plan Cycle) for Imperative and Guideline Shellfish Growing Water Standards, with high confidence.

Objective	First Cycle 2015	Confidence	Second Cycle 2021	Confidence	Third Cycle 2027	Confidence
Imperative Shellfish Growing Waters Standard	Pass by 2015	High	Pass by 2021	High	Pass by 2027	High
Guideline Shellfish Growing Waters Standard	Pass by 2015	High	Pass by 2021	High	Pass by 2027	High

96.10 Summary of Actions

Action	Deadline
Improvements to Oban CSO under Scottish Water's programme of investment.	-
No further improvement actions currently planned.	N/A