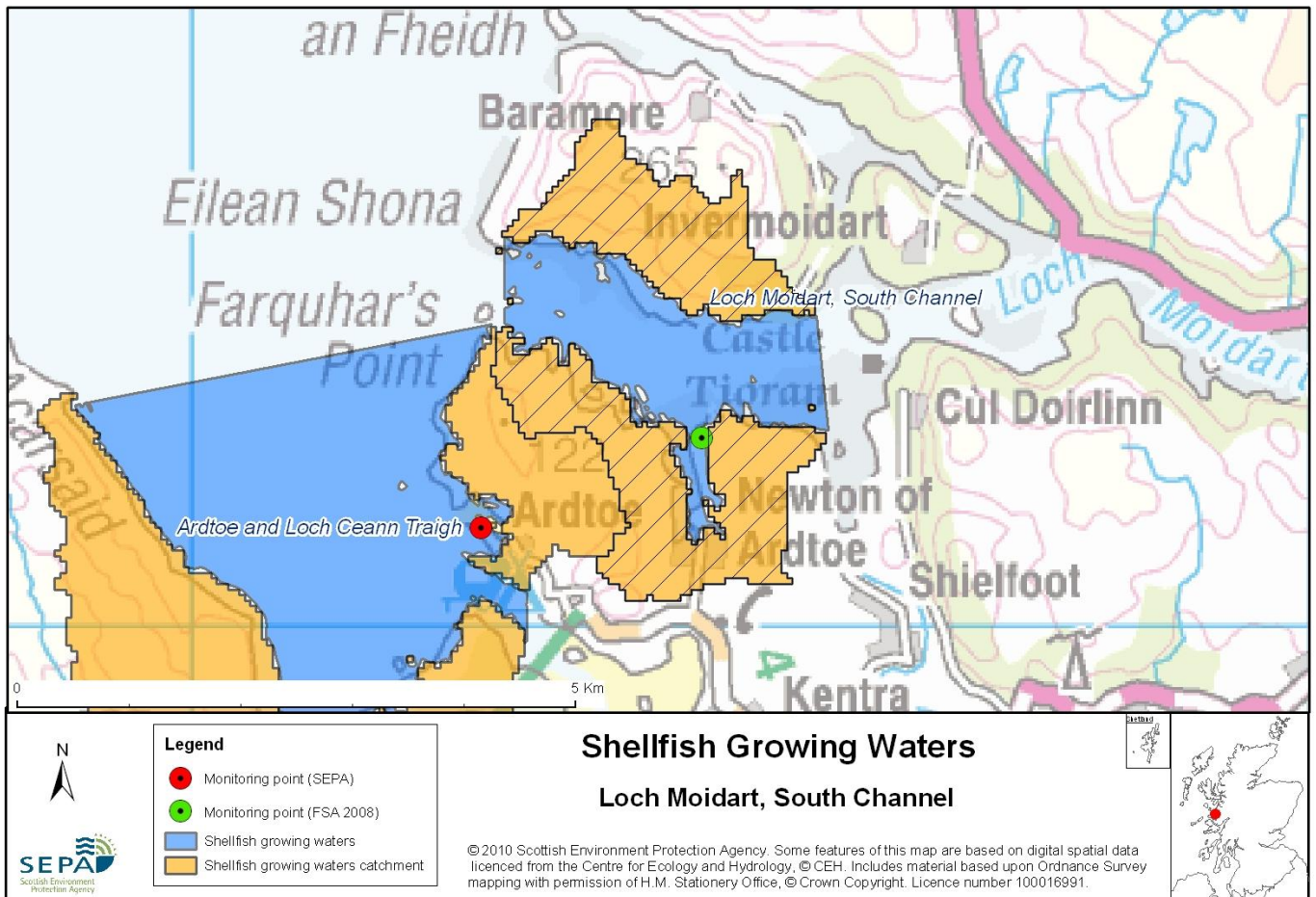


83 Loch Moidart, South Channel



Name	Loch Moidart, South Channel
Report Reference Number	83
WFD Code	UKS7992383
Local Information	An area bounded by lines between NM6268772697 (Farquhar's Point) and NM6280073463 and between NM6559372769 and NM6569571747, and extending to MHWS.
Designated Area (km ²)	2.92
Year of Designation	2002
Sampling Points	Loch Moidart South - NM 65000 72700
Commencement of Monitoring	2003

83.1 Commercial Shellfish Interests

Loch Moidart, South Channel is also designated by the Food Standards Agency (FSA) as a Shellfish Harvesting Area for the production of Pacific oysters (*Crassostrea gigas*).

Loch Moidart: South Channel (Pacific oysters)
2011 = A - April & May, October to December
B - June to September
2012 = B - January
A - February to March

Category A sites are of the highest standard and means that shellfish can go directly for human consumption however category B requires that shellfish must be depurated, heat-treated or re-laid prior to human consumption.

FSA have not carried out a sanitary survey for Loch Moidart.

For more information on Food Standards Agency Classification please visit:
<http://www.food.gov.uk/scotland/safetyhygienescot/shellmonitorscot/shellclassesscot/>

83.2 Bathymetric Information

The South Channel is separated from the north by an intertidal zone. It has a length of 9km and a maximum depth of 14m. The catchment area of 329km² and the fresh/tidal flow ratio of 77 suggest a high freshwater input (salinity reduction of 2.6ppt). The flushing time is very short at less than 1 day. Due to the complex surrounding topography, the area would be sheltered from winds. There are two sills: one has a length of 200m at a depth of 3m and the second has a length of 550m and a depth of 1m. There are no morphological pressures on the waters.

83.3 Conservation Designations

To the west of this Shellfish Water is Ardtoe and Loch Ceann Traigh designated Shellfish Water ([UKS7992334](#)).

National Nature Reserve (NNR) – [Claish Moss](#)
Designated 21/09/1978

RAMSAR – [Claish Moss](#)
Designated 24/07/1981 for internationally important habitat (upland blanket bog)

Special Protected Area (SPA) – [Loch Shiel](#)
Designated 02/02/2000 for internationally important aggregations of breeding birds - Black-throated diver (*Gavia arctica*)
This is also a **Water Dependent SPA** and a **Groundwater Dependent SPA**

Special Area of Conservation (SAC) – [Claish Moss and Kentra Moss](#)
Designated 17/03/2005 for internationally important habitat (upland blanket bog, upland Depressions on peat substrates)
This is also a **Water Dependent SAC** and a **Groundwater Dependent SAC**

Special Area of Conservation (SAC) – [Loch Moidart and Loch Shiel Woods](#)

Designated 17/03/2005 for internationally important species (Otter (*Lutra lutra*)) and habitat (Alder woodland on floodplains, Intertidal mudflats and sandflats, Mixed woodland on base-rich soils associated with rocky slopes, Western acidic oak woodland)

This is also a **Water Dependent SAC** and a **Groundwater Dependent SAC**

Special Area of Conservation (SAC) – [River Moidart](#)

Designated 17/03/2005 for internationally important species - Freshwater pearl mussel (*Margaritifera margaritifera*)

This is also a **Water Dependent SAC** and a **Groundwater Dependent SAC**

Special Area of Conservation (SAC) – [Sound of Arisaig \(Loch Ailort to Loch Ceann Traigh\)](#)

Designated 17/03/2005 for internationally important habitat - Subtidal sandbanks

This is also a **Water Dependent SAC**

Site of Special Scientific Interest (SSSI) – [Kentra Bay and Moss](#)

Designated 30/03/1990 for upland blanket bog, Bryophyte assemblage, Lichen assemblage, Vascular plant assemblage, Upland oak woodland, Saltmarsh, Mudflat, Maritime cliffs.

Site of Special Scientific Interest (SSSI) – [Loch Moidart](#)

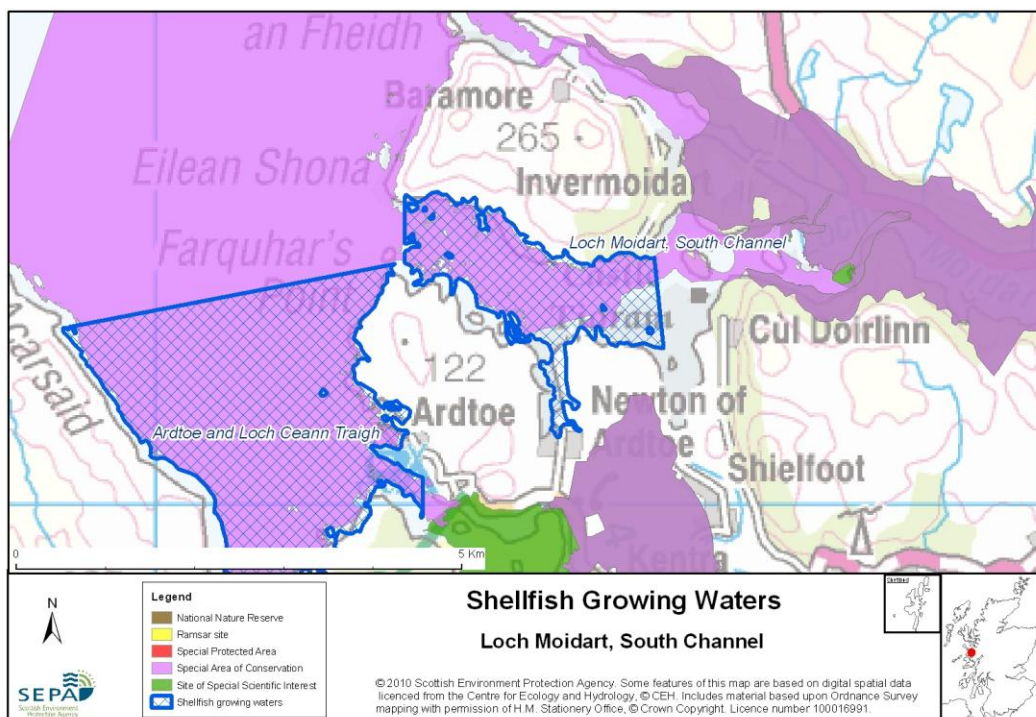
Designated 10/11/1986 for Structural and metamorphic geology (moine), Mudflat, Saltmarsh, Upland oak woodland, Beetle species (*Schizotus pectinicornis*)

Site of Special Scientific Interest (SSSI) – [Loch Shiel](#)

Designated 18/03/1991 for habitats (Oligotrophic loch, Upland oak woodland, Native pinewood), Bryophyte assemblage and species – butterflies (Chequered skipper (*Carterocephalus palaemon*)) and aggregations of breeding birds (Black-throated diver (*Gavia arctica*))

Site of Special Scientific Interest (SSSI) – [Claish Moss](#)

Designated 05/06/1985 for assemblages of breeding birds, Dragonfly assemblage, Upland blanket Bog



83.4 Topography and Land Use – Potential Diffuse Pollution Sources

The land around the designated area is mainly of heather moorland, semi-natural woodland and coniferous plantation, with pockets of improved pasture. A minor road serves the small settlement of Newton of Ardtoe, on the shore of the designated area.

Freshwater inputs directly to the designated area are limited to minor streams, none of which are monitored by SEPA but are considered to be of at least good quality. Much of the freshwater flowing through the N and S channels comes from the River Shiel and the River Moidart. Both these rivers are classified by SEPA as being of good quality.

83.5 Point Source Discharge

There are no consented discharges from public sewage systems, industrial operations or known private septic tanks direct to the designated area. There is a significant discharge of sewage effluent to the River Shiel upstream of the designated area from Acharacle Sewage Treatment Works. It is also likely that there are unconsented discharges from private septic tanks to the designated area or to watercourses in the catchment.

There are no fish farms within at least 2km of the designated area.

83.6 Compliance Monitoring Regime

The following monitoring regime of the designated area was implemented in the second half of 2005.

Year	Monitoring Regime
2005 -	<ul style="list-style-type: none"> • Quarterly for Sal, DO, pH, temperature, visible oil • Every three years for metals and organohalogens in mussels, next collection scheduled for 2011 • Quarterly for faecal coliforms in mussels

83.7 Compliance History

UKS7992383 - Loch Moidart, South Channel				
	Compliance history for Waters and Biota, excluding faecal coliforms data			Compliance history for faecal coliforms
Year	Overall Result	Imperative	Guideline	Guideline
2003	Pass	Pass	Pass	Fail
2004	Pass	Pass	Fail	Fail
2005	Pass	Pass	Pass	Pass
2006	Pass	Pass	Pass	No results
2007	Pass	Pass	Pass	Pass
2008	Pass	No Data	No Data	Pass
2009	Pass	Pass	Pass	Fail
2010	Pass	Pass	Pass	Fail

A single sample in 2004 gave a result below the Guideline minimum standard for salinity. There are no anthropogenic inputs to the area that could account for a drop in salinity to such levels. The result is almost certainly due to a combination of low tide and high run off from rainwater affecting the sampling site at the time of sampling, and is not representative of the salinity of the designated area as a whole. This being a natural phenomenon, no measures will be taken, in accordance with Article 7(3) of the Directive.

Of the six samples analysed for Faecal Coliforms in 2003 and 2004, three gave results above the Guideline standard. All four samples in 2005 complied with the Guideline standard. There were no samples taken during 2006 due to safety concerns with the site. The waters passed in 2007 and 2008, but failed in 2009 and 2010.

83.8 Future Monitoring

The monitoring regime (83.6 Compliance Monitoring Regime) will be followed. In the event of any chemistry parameter failing to meet any EQS, the site will be revisited and resampled for the failed parameter.

Samplers are asked to identify any evidence of visible harm to the shellfish population at the site.

83.9 Improvement Actions

There are currently no improvement actions planned for this designated Shellfish Water. Acharacle Sewage Treatment Works is monitored by SEPA to ensure compliance with the terms of the environmental licence for the site.

WFD Objectives

Under the Water Framework Directive, the target objectives expect this shellfish water to Pass by 2015 (first River Basin Management Plan Cycle) for Imperative and Guideline Shellfish Growing Water Standards, with high confidence.

Objective	First Cycle 2015	Confidence	Second Cycle 2021	Confidence	Third Cycle 2027	Confidence
Imperative Shellfish Growing Waters Standard	Pass by 2015	High	Pass by 2021	High	Pass by 2027	High
Guideline Shellfish Growing Waters Standard	Pass by 2015	High	Pass by 2021	High	Pass by 2027	High

83.10 Summary of Actions

Action	Deadline
There are currently no improvement actions planned for this designated Shellfish Water associated with any point source discharges. SEPA will investigate any environmental complaint that may have an impact on water quality and will ensure appropriate corrective or remedial action is implemented	N/A