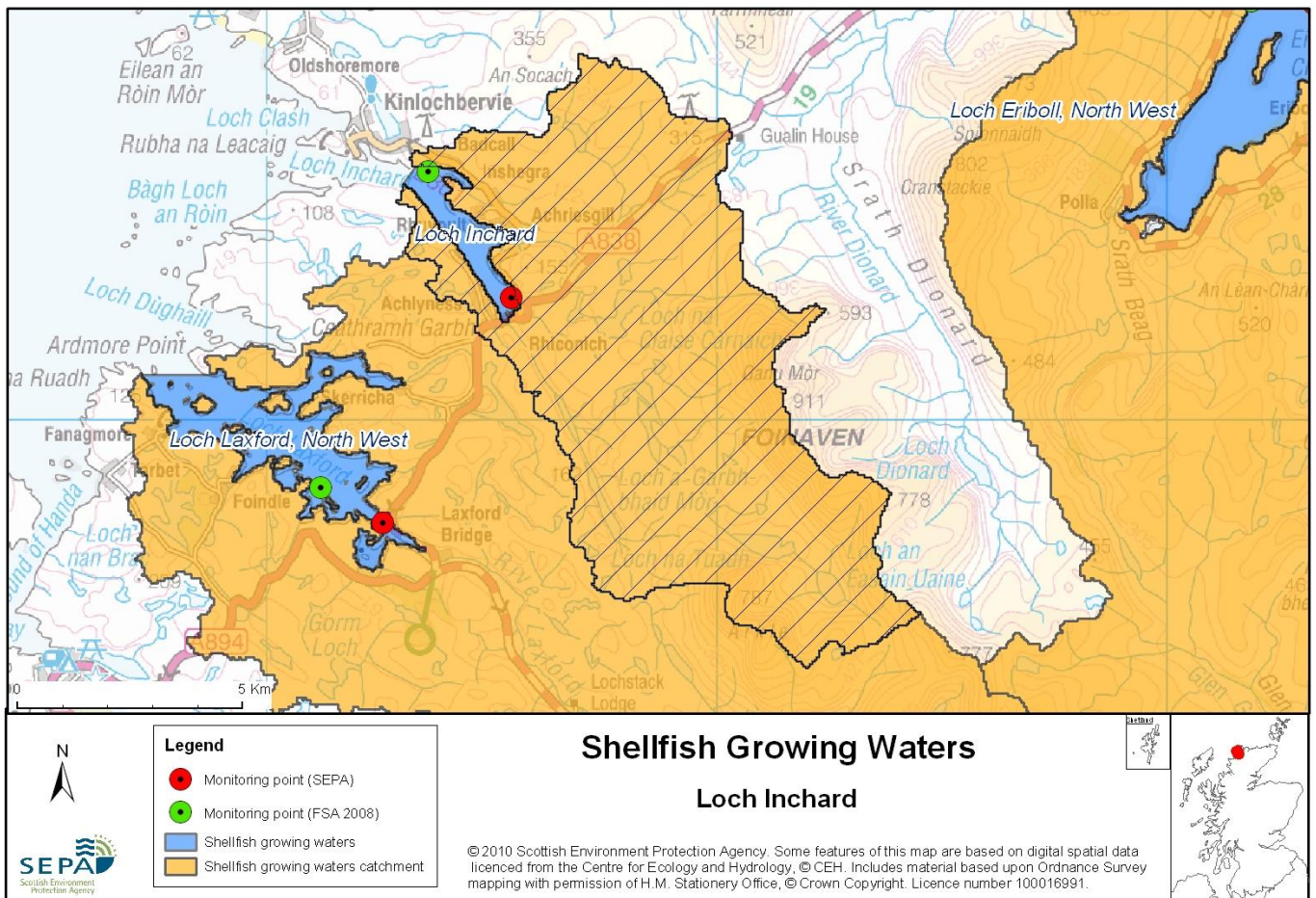


77 Loch Inchard



Name	Loch Inchard
Report Reference Number	77
WFD Code	UKS7992377
Local Information	An area inshore of a line drawn between NC2303455245 and NC2329655595 and extending to MHWS.
Designated Area (km²)	2.44
Year of Designation	2002
Sampling Points	Loch Inchard Mussel Site – NC 25449 52714
Commencement of Monitoring	2003

77.1 Commercial Shellfish Interests

Part of Loch Inchard is designated as a Shellfish Harvesting Area by the Food Standards Agency (FSA). There are currently five sites currently producing common mussels (*Mytilus edulis*) all of which are designated as below.

Loch Inchard: All sites (Common mussels)
2011 = A - April to September
 B - October to December
2012 = A - January to March

Category A sites are of the highest standard and means that shellfish can go directly for human consumption however category B requires that shellfish must be depurated, heat-treated or re-laid prior to human consumption.

FSA have completed a sanitary survey for Loch Inchard.

For more information on Food Standards Agency Classification please visit:
<http://www.food.gov.uk/scotland/safetyhygienescot/shellmonitorscot/shellclassesscot/>

77.2 Bathymetric Information

Situated near Kinlochbervie at the northwest tip of Scotland, Loch Inchard is 6.6km in length with a maximum depth of 61m. Due to its aspect, the area would be subject to west and north-westerly winds. The catchment area is 84km² and the loch flushes in 4 days. With a fresh/tidal flow of 15 and salinity reduction of 0.5ppt, this loch would be moderately influenced by freshwater. There is 1 sill, located adjacent to Kinlochbervie Harbour, with a length of 1900m and a depth of 24m. There are no morphological pressures on the waters.

77.3 Conservation Designations

The majority of this designated Shellfish Water is also designated as a Shellfish harvesting Area by FSA.

South of this designation is Loch Laxford, North West, which is designated as a Shellfish Water ([UKS7992327](#)) and a FSA Shellfish Harvesting area.

Special Protected Area (SPA) – [Foinaven](#)

Designated 28/10/2010 for aggregations of internationally important breeding bird species - Golden eagle (*Aquila chrysaetos*)

Special Area of Conservation (SAC) – [Oldshoremore and Sandwood](#)

Designated 17/03/2005 for Internationally important habitats – supralittoral coastal sediment (Dune grassland, Machair and shifting dunes with marram)

Special Area of Conservation (SAC) – [Foinaven](#)

Designated 17/03/2005 for internationally important habitats (Acid peat-stained lakes and ponds, Acidic scree, Alpine and subalpine heaths, upland blanket bog, Depressions on peat substrates, Dwarf shrub heath (Upland), Montane acid grasslands) and internationally important species (Freshwater pearl mussel (*Margaritifera margaritifera*), Otter (*Lutra lutra*))

This is also a **Water Dependent SAC** and a **Groundwater Dependent SAC**

Special Area of Conservation (SAC) – [Loch Laxford](#)

Designated 17/03/2005 for Inshore sublittoral marine rock (reefs) and littoral marine sediment (Shallow inlets and bays)

This is also a **Water Dependent SAC**

Sites of Special Scientific Interest (SSSI) – [Sheigra - Oldshore More](#)

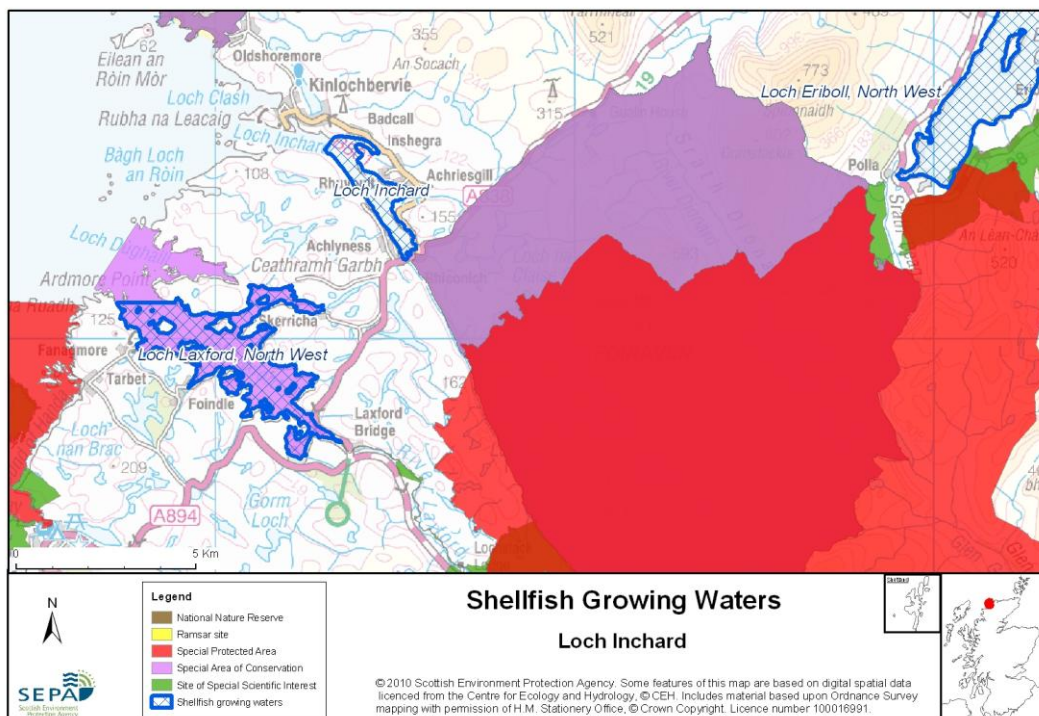
Designated 24/02/1987 for supralittoral marine sediment (machair and sand dunes)

Sites of Special Scientific Interest (SSSI) – [Southern Parphe](#)

Designated 20/02/1990 for habitats (Alpine heath, upland blanket bog), Coastal Geomorphology of Scotland, supralittoral marine sediment (sand dunes), supralittoral marine rock (maritime cliffs)

Sites of Special Scientific Interest (SSSI) – [Foinaven](#)

Designated 08/12/1986 for habitats (upland blanket bogs, Dystrophic and oligotrophic loch types present, Upland birch woodland, Tall herb ledge), Structural and metamorphic geology (moine), assemblages of breeding birds



77.4 Topography and Land Use – Potential Diffuse Pollution Sources

Loch Inchard is predominantly bordered by rough, rocky ground, improved pasture and semi-natural grasslands. Kinlochbervie is a small settlement at the mouth of Loch Inchard and is reached from Rhiconich, at the head of the Loch, by the B801 road which passes inland of the northeastern side of the Loch. There is sparse housing along this road.

The principal freshwater input is the River Rhiconich which drains the eastern slopes of Foinaven and its surrounding moorland. This river is classified by SEPA as being of good quality. The area to the east of Loch Inchard is drained by Achriesgill water into the loch. This river is unclassified by SEPA but is assumed to be of good quality since there is minimal population or intensive land use in the catchment. There are several other minor freshwater inputs to the designated area, one of which receives the effluent from Rhiconich landfill via an unnamed tributary. This tributary is classified as being of poor quality by SEPA, although the status of the river, Allt Ruidhean na Sroine, between the tributary and Loch Inchard is unknown.

SEPA does not have diffuse source pollution pressures recorded as causing downgrades recorded for this shellfish water.

77.5 Point Source Discharge

The designated water receives septic tank discharges from one or two private houses and from the Rhiconich Hotel and the Rhiconich public toilets. The Rhiconich landfill effluent is treated through a reed bed before it discharges to the unnamed burn.

Kinlochbervie Harbour lies within 2km of the designated area and has historically been impacted by frequent oil spills and rubbish.

Other discharges to Loch Inchard outside of the designated area include the Kinlochbervie Harbour septic tank and the Kinlochbervie Innis Place septic tank, Kinlochbervie Bervie pumping station Emergency overflow, . Kinlochbervie Clash pumping station Emergency overflow Kinlochbervie Manse Road pumping station Emergency overflow,

Type	Name	Consent No.	Treatment	NGR	PE	Additional Information
Other	Rhiconich Hotel	CAR/S/1015024	Septic Tank	NC 2545 5235	-	-
	Sutherland District Council	WPC/N/0051680*	Septic Tank	NC 2545 5265	-	-
	Rhiconich Police House and Public toilets	CAR/R/1017728	Septic Tank	NC 5478 5242	-	-
	Inchard House	CAR/R/1076947	Septic Tank	NC 2552 5266	-	-

There are no fish cages within the designated shellfish water area. SEPA does not have point source pollution pressures recorded as causing downgrades recorded for this shellfish water.

77.6 Compliance Monitoring Regime

The following monitoring regime of the designated shellfish waters was implemented in July 2005

Year	Monitoring Regime
2005	<ul style="list-style-type: none"> • Quarterly for Sal, DO, pH, temperature, visible oil • Twice yearly for metals in water • Annually for metals and organohalogens in mussels • Quarterly for faecal coliforms in mussels

77.7 Compliance History

UKS7992377 - Loch Inchar				
	Compliance history for Waters and Biota, excluding faecal coliforms data			Compliance history for faecal coliforms
Year	Overall Result	Imperative	Guideline	Guideline
2003	Pass	Pass	Fail	Pass
2004	Pass	Pass	Pass	Pass
2005	Pass	Pass	Fail	Fail
2006	Pass	Pass	Pass	Pass
2007	Pass	Pass	Pass	Pass
2008	Pass	Pass	Pass	Pass
2009	Pass	Pass	Pass	Pass
2010	Pass	Pass	Pass	Pass

The Guideline standards for dissolved oxygen (68.4% saturation) and for salinity (1.5 ‰) were separately breached on one occasion each in 2003. In December 2005 the Guideline standards for pH and salinity were breached with results of 6.09 (7-9) and 3.44‰ (12-38‰).

Of four samples taken in 2005 for Faecal Coliforms, the results of three of them breached the Guideline standard. The waters complied with the guideline standard from 2006 to 2010.

77.8 Future Monitoring

Monitoring will continue as described above (77.6 Compliance Monitoring Regime). However if any chemistry parameter fails to meet any environmental quality standards (EQS) the site will be revisited and resampled for the failing parameter.

77.9 Improvement Actions

There are currently no planned improvements scheduled for this designated Shellfish Water.

WFD Objectives

Under the Water Framework Directive, the target objectives expect this shellfish water to Pass by 2015 (first River Basin Management Plan Cycle) for Imperative and Guideline Shellfish Growing Standards with high confidence.

Objective	First Cycle 2015	Confidence	Second Cycle 2021	Confidence	Third Cycle 2027	Confidence
Imperative Shellfish Growing Waters Standard	Pass by 2015	High	Pass by 2021	High	Pass by 2027	High
Guideline Shellfish Growing Waters Standard	Pass by 2015	High	Pass by 2021	High	Pass by 2027	High

77.10 Summary of Actions

Action	Deadline
No improvement actions currently planned.	N/A