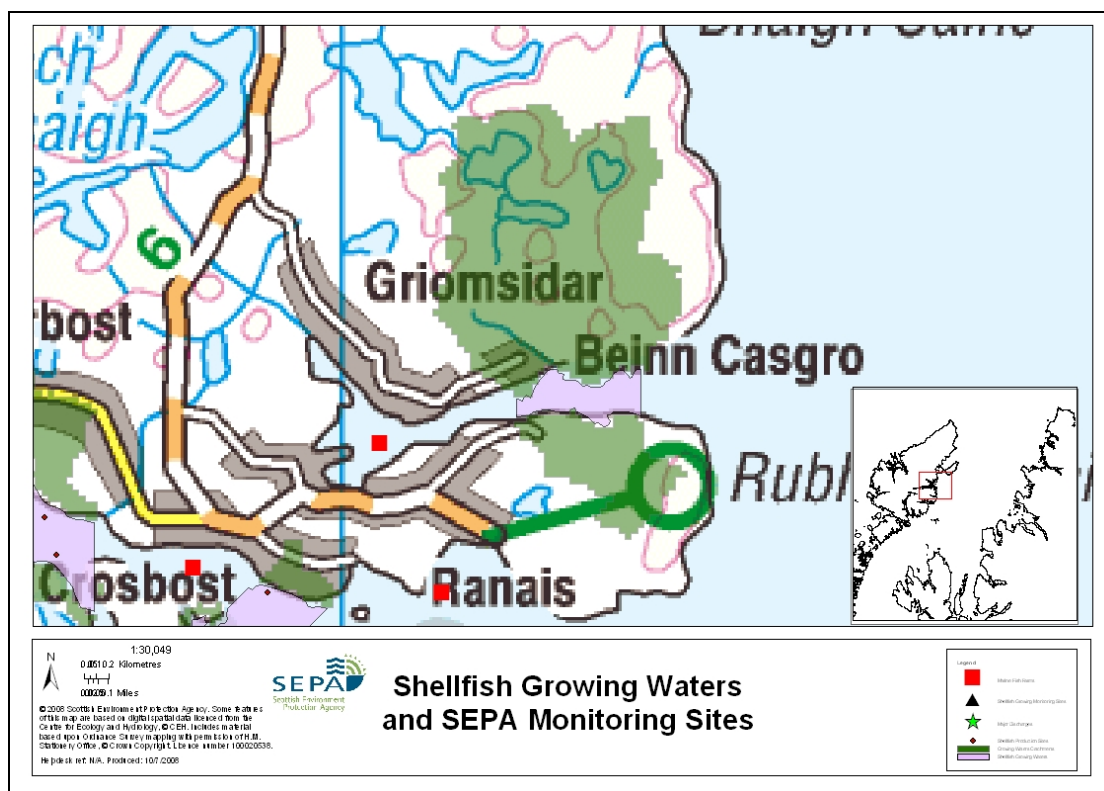


73 Loch Grimshader



Name	Loch Grimshader	
Report Reference No.	73	
WFD Code	UKS7992373	
Location Information	An area bounded by lines drawn between NB 414 256 and NB 414 257 and between NB 424 256 and NB 424259 (Rubha Alltan Pheadair) and extending to MLWS.	
Designated Area (Km²)	0.2	
Year of Designation	2002	
Sampling Points	Loch Grimshader	NB4166225932
Commencement of Monitoring	2003	

73.1 Commercial Shellfish Interests

There is no known commercial shellfish production in the designated water.

73.2 Bathymetric Information

Situated south of Stornoway on the Isle of Lewis, Loch Grimshader is a small loch being 2.5km in length. Exposed only to easterly winds the area would be quite sheltered. Its maximum depth is 12m and it is very quick to flush, taking only 1 day.

The fresh/tidal flow ratio of 10 and salinity reduction of 0.3ppt would suggest low freshwater influence. There are no morphological pressures on the waters.

73.3 Conservation Designations

There are no designated conservation areas in the vicinity of the shellfish growing area.

73.4 Topography And Land Use – Potential Diffuse Pollution Sources

The designated area lies towards the mouth of this narrow sea loch on the eastern coast of the sparsely populated Isle of Lewis. Minor roads on either side of the loch terminate at the start of the designated area, with three small farms extending to the water's edge. In addition to a small amount of pasture, the designated area is bordered by a mixture of blanket bog, rough ground and lochans. Fresh water inputs to the area are small and drain the surrounding blanket bog. The small settlements of Ranish and Griomsiadar lie 2km up loch, to the west.

73.5 Point Source Discharges

There are no point source discharges from public sewage systems or from industrial operations to the designated area. Three septic tanks, serving the settlement of Ranish (combined PE <250), discharge up loch of the area. Visible evidence of sewage solids from Ranish A septic tank has caused Loch Grimshader to be classified as unsatisfactory by SEPA.

Type	Name	Consent No.	Treatment	NGR	PE	Additional Information
Scottish Water Asset	Ranish A	CAR/L/1002881	ST	NB399253	73	
	Ranish B	No CAR authorisation	ST	NB401249	52	
	Ranish C	CAR/L/1002877	ST	NB409252	82	

There are no fish farms within the designated area. One fishfarm operates in Loch Grimshader, approximately 1.5km up loch of the designated shellfish growing area, and has a consented biomass of 622 tonnes.

Name	Category	Consent No.	NGR	Biomass (t)
Grimshader	Fish farm	No CAR authorisation	NB 403 254	622

73.6 Compliance Monitoring Regime

Year	Monitoring Regime
2005 -	<ul style="list-style-type: none"> Quarterly for Sal, DO, pH, temperature, visible oil Every three years for metals and organohalogens in mussels, next collection scheduled for 2008 Quarterly for faecal coliforms in mussels

This monitoring regime of the designated area was not fully implemented until the second half of 2005.

73.7 Compliance History

	Compliance History for Waters and Biota, Excluding Faecal Coliforms Data			Compliance History for Faecal Coliforms
Year	Overall Result	Imperative	Guideline	Guideline
2003	Pass	Pass	Pass	Fail
2004	Pass	Pass	Pass	Pass
2005	Pass	Pass	Pass	Pass
2006	Pass	Pass	Pass	Fail
2007	Pass	Pass	Pass	Fail

Of the six samples analysed for Faecal Coliforms in 2003 and 2004, three gave results above the Guideline standard. In 2005, one sample of four gave results above the Guideline standard. The waters failed to comply with the guideline standard in 2006 and 2007.

73.8 Future Monitoring Recommendations

The monitoring regime as described in section 6 will be followed. In the event of any chemistry parameter failing to meet any EQS, the site will be revisited and re-sampled for the failed parameter.

73.9 Improvement Actions

There are currently no improvement actions planned for this area.

73.10 Summary of Actions

Action	Deadline
No improvement actions currently planned.	Unspecified