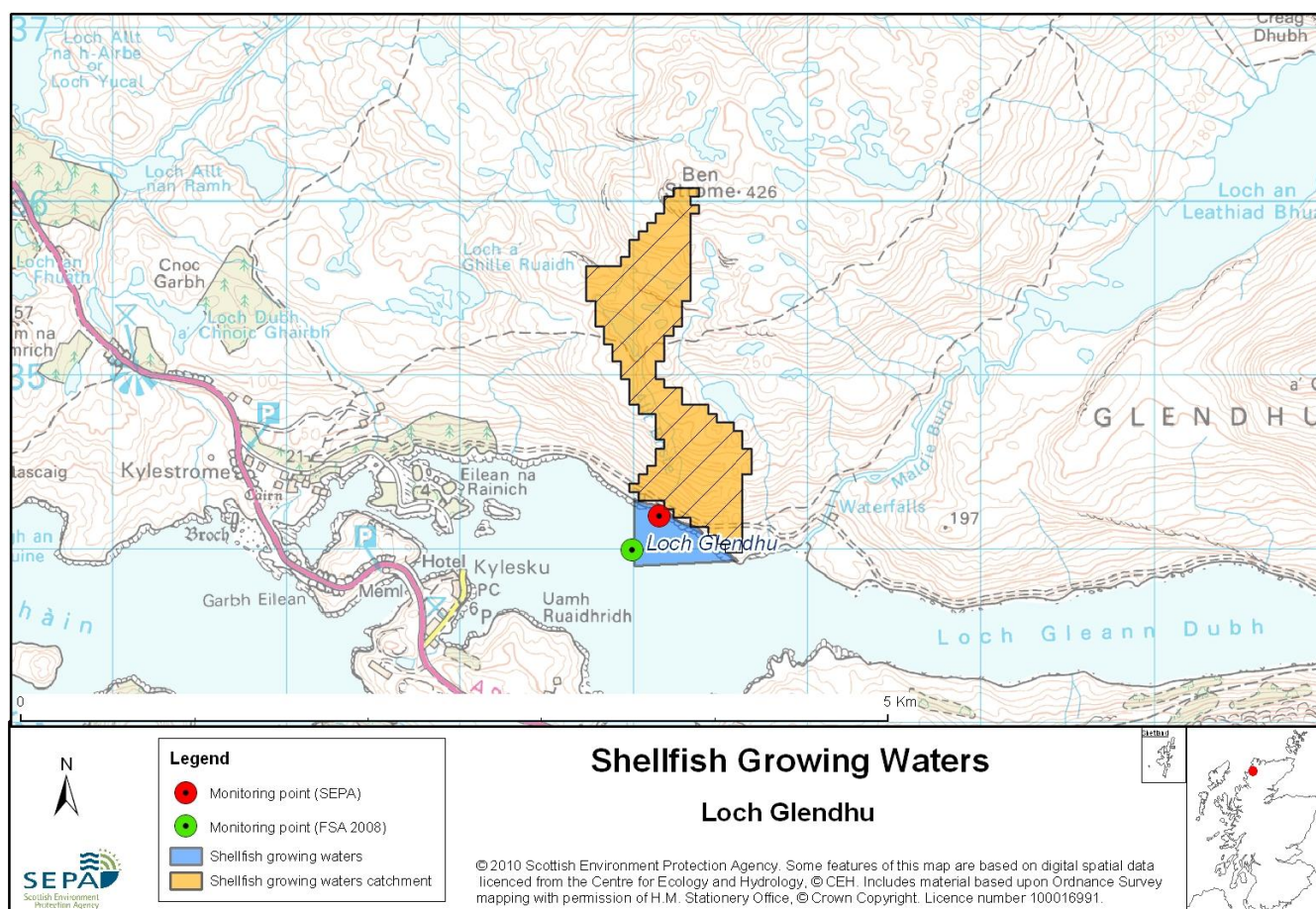


72 Loch Glendhu



Name	Loch Glendhu
Report Reference Number	72
WFD Code	UKS7992372
Local Information	An area bounded by lines drawn between NC2400034283 and NC2400033900 and between NC2400033900 and NC2460033927, and extending to MHWS.
Designated Area (km²)	0.13
Year of Designation	2002
Sampling Points	Loch Glendhu Mussel Site - NC 24149 34185
Commencement of Monitoring	2003

72.1 Commercial Shellfish Interests

The Loch Glendhu Shellfish Water designated Shellfish Water is a small area within a Food Standards Agency (FSA) Shellfish Harvesting Area Loch Glencoul. FSA classifies for common mussel (*Mytilus edulis*) production.

Loch Glencoul: Kylesku (Common mussels)
2011 = A - April to July, November & December
B - August to October
2012 = A - January to March

Category A sites are of the highest standard and means that shellfish can go directly for human consumption however category B requires that shellfish must be depurated, heat-treated or re-laid prior to human consumption.

FSA have not carried out a sanitary survey for Loch Glencoul (including Loch Glendhu)

For more information on Food Standards Agency Classification please visit:
<http://www.food.gov.uk/scotland/safety/hygienscot/shellmonitorscot/shellclassesscot/>

72.2 Bathymetric Information

This loch is located east of Kylesku and is one of three sea lochs branching from Eddrachillis Bay. It occupies a sheltered position, is approximately 6km in length and has a maximum depth of around 22m. There are no sills present. There are no morphological pressures on the waters.

72.3 Conservation Designations

Special Area of Conservation (SAC) – [Ardvar and Loch a' Mhuilinn Woodlands](#)

Designated 17/03/2005 for internationally important species (Otter (*Lutra lutra*) and Freshwater pearl mussel (*Margaritifera margaritifera*)) and Western acidic oak woodland

This is also a **Water Dependent SAC**

Sites of Special Scientific Interest (SSSI) – [Loch Glencoul](#)

Designated 29/02/1984 for Upland birch woodland and Structural and metamorphic geology (moine)

Sites of Special Scientific Interest (SSSI) – [Ardvar Woodlands](#)

Designated for 09/07/1986 for Upland birch woodland



72.4 Topography and Land Use – Potential Diffuse Pollution Sources

The land around the designated area is of semi-natural grasslands, heather moorland and of rough, rocky ground. The area has a shore-line of less than 500m, along which there are no roads nor houses. The only freshwater input directly to the designated area is Allt Briste. This minor river is not monitored by SEPA but is considered to be of at least good quality since it is not subjected to any environmental stresses.

SEPA currently has no diffuse source pollution pressures causing a downgrade.

72.5 Point Source Discharge

There are no point source discharges from public sewage systems or from industrial operations to the designated area, and no public sewage discharges within more than 2km distance. There are a small number of private septic tank outlets within 2km of the shellfish growing water.

There are no fish farms within the designated area, although there is one immediately outside it with a consented biomass of 750 tonnes.

Category	Name	Consent No.	NGR	Biomass (t)	Additional Information
Fish Farm	Loch Glendhu	WPC/N/0062381*	NC24753385	750	-

* There is no CAR consent number for this site at present.

SEPA currently has no point source pollution pressures causing a downgrade.

72.6 Compliance Monitoring Regime

This monitoring regime of the designated area was not fully implemented until the second half of 2005.

Year	Monitoring Regime
2005	<ul style="list-style-type: none">• Quarterly for Sal, DO, pH, temperature, visible oil• Every three years for metals and organohalogens in mussels, next collection scheduled for 2011• Quarterly for faecal coliforms in mussels

72.7 Compliance History

UKS7992372 - Loch Glendhu				
	Compliance history for Waters and Biota, excluding faecal coliforms data			Compliance history for faecal coliforms
Year	Overall Result	Imperative	Guideline	Guideline
2003	Pass	Pass	Pass	Pass
2004	Pass	Pass	Pass	Pass
2005	Pass	Pass	Pass	Pass
2006	Pass	Pass	Pass	Pass
2007	Pass	Pass	Pass	Pass
2008	Pass	Pass	Pass	Pass
2009	Pass	Pass	Pass	Pass
2010	Pass	Pass	Pass	Pass

There have been no breaches in compliance with the Guideline standard for faecal coliforms since monitoring began in 2003.

72.8 Future Monitoring

The monitoring regime (72.6 Compliance Monitoring Regime) will be followed. In the event of any chemistry parameter failing to meet any EQS, the site will be revisited and resampled for the failed parameter.

72.9 Improvement Actions

There are no improvement actions planned for this area currently.

WFD Objectives

Under the Water Framework Directive, the target objectives expect this shellfish water to Pass by 2015 (first River Basin Management Plan Cycle) for Imperative and Guideline Shellfish Growing Water Standards, with high confidence.

Objective	First Cycle 2015	Confidence	Second Cycle 2021	Confidence	Third Cycle 2027	Confidence
Imperative Shellfish Growing Waters Standard	Pass by 2015	High	Pass by 2021	High	Pass by 2027	High
Guideline Shellfish Growing Waters Standard	Pass by 2015	High	Pass by 2021	High	Pass by 2027	High

72.10 Summary of Actions

Action	Deadline
No improvement actions currently required	N/A