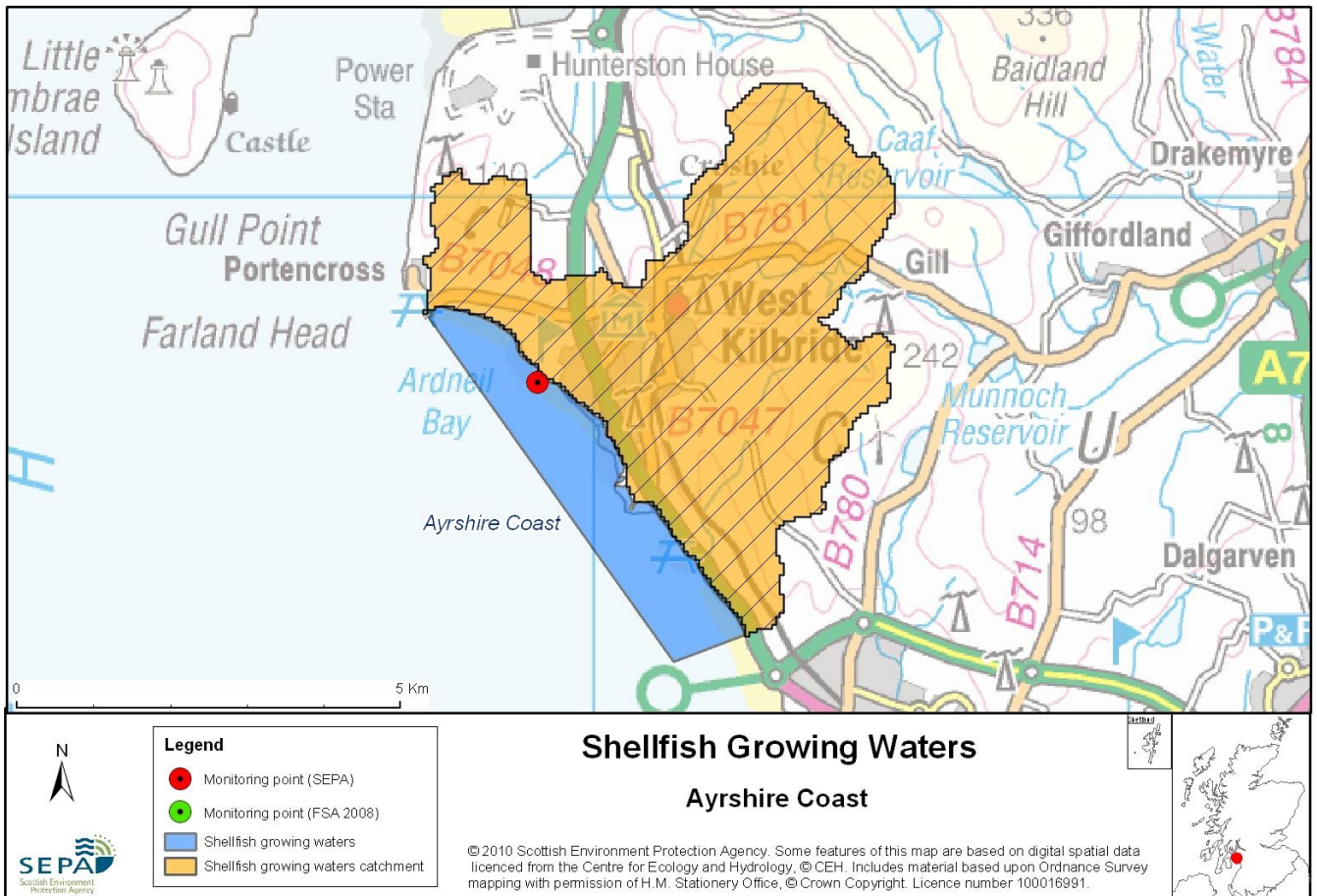


7 Ayrshire Coast



Name	Ayrshire Coast
Report Reference Number	7
WFD Code	UKS799237
Local Information	An area bounded by the coast and a line from a point at NS1783948444 (Farland Head) to point NS2104143938 and thence to the coast at NS2197744291 (Montfode) and extending to MHWS.
Designated Area (km²)	4.86
Year of Designation	1998
Sampling Points	Ayrshire Seamill at Bell Stane Mussel Site - NS 19276 47587
Commencement of Monitoring	1982

7.1 Commercial Shellfish Interests

There is no shellfish production in the area and it is not classified by the Food Standards Agency.

For more information on Food Standards Agency Classification please visit:
<http://www.food.gov.uk/scotland/safetyhygienescot/shellmonitorscot/shellclassesscot/>

7.2 Bathymetric Information

This water comprises an open west/south west facing coastal water body some 4 km long and ranging from 10 – 15 m deep at outer edge. The waters are highly dynamic, being exposed to prevailing winds. There are no morphological pressures in the area.

7.3 Conservation Designations

Approximately 6km north is Fairlie Shellfish Water ([UKS7992347](#)) Shellfish Water; this is also designated as a Shellfish Harvesting Area by the Food Standards Agency (FSA)

Sites of Special Scientific Interest (SSSI) – [Portencross Coast](#)

North of the Shellfish Water. Designated 27/04/1971 for habitat (Sandflat, upland mixed ash woodland) and aggregations of non-breeding birds

Sites of Special Scientific Interest (SSSI) – [Ardrossan to Saltcoats Coast](#)

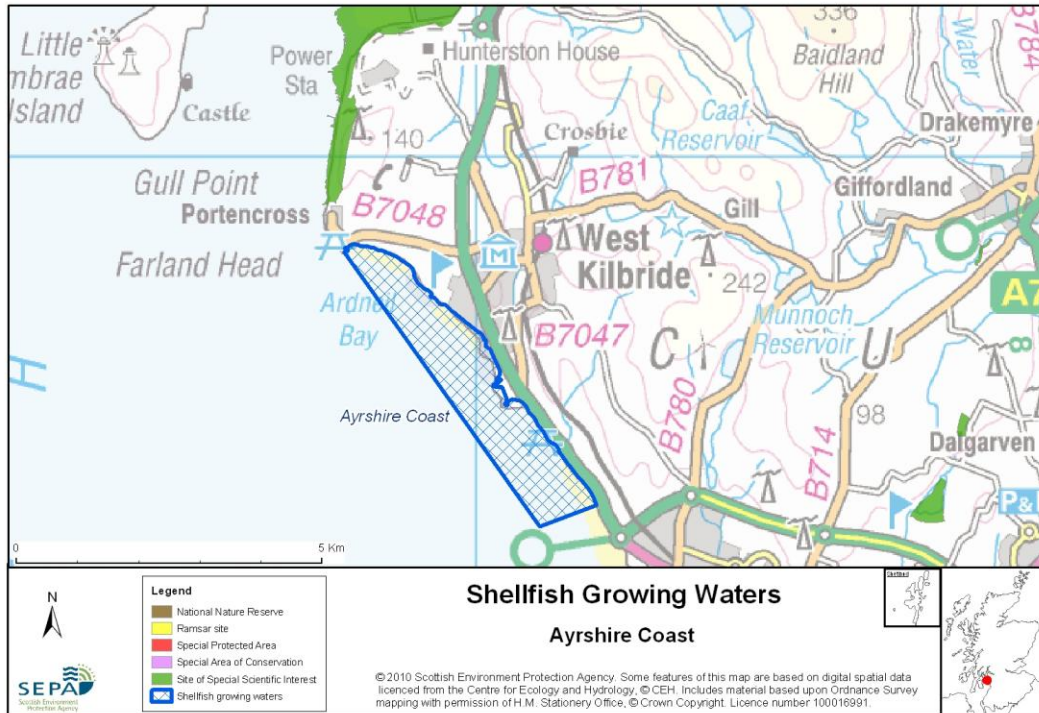
South of the Shellfish Water. Designated 19/03/1987 for igneous petrology (Carboniferous - Permian Igneous)

Sites of Special Scientific Interest (SSSI) - [Ashgrove Loch](#)

Designated 30/09/1986 for Mesotrophic loch and Open water transition fen

Sites of Special Scientific Interest (SSSI) - [High Smithstone Quarry](#)

Designated 31/03/1989 for Stratigraphy (Upper Carboniferous [Namurian (part) - Westphalian])



7.4 Topography and Land Use – Potential Diffuse Pollution Sources

The shellfish area extends from Farland Head, north of the town of West Kilbride to just north of the town of Ardrossan. Much of the surrounding coast is used for livestock farming. There is a golf course on the coast. The A75 main road and railway run along the coast between West Kilbride and Ardrossan. The Kilbride Burn is the major freshwater input but several other smaller watercourses also discharge into the shellfish water.

The most likely source of diffuse source pollution to this shellfish water is from livestock farming.

Faecal coliform levels in waters and shellfish flesh are influenced by rainfall; diffuse pollution from agriculture as well as by direct/indirect sewage discharges. Discharges to Ayrshire coast, including private septic tanks, CSO via the Kilbride Burn and CSO and emergency overflow for West Kilbride sewage pumping station are thought to be the main underlying cause of failures in the Guideline standard. Diffuse sources could be involved in failure of the Guideline standard

7.5 Point Source Discharge

There are no routine Scottish Water sewage discharges to this area. Normal sewage arisings are pumped south to Scottish Water’s Stevenston works for full biological treatment.

Type	Name	Treatment	Consent No.	NGR	PE	Additional Information
Scottish Water Asset	CSO and emergency overflow for West Kilbride sewage pumping station	Screening	CD11797 CD11796	NS 2012 4622	5000	Discharges only during exceptionally wet conditions
	Ardrossan North Shore Road Emergency Overflow	20 mm bar screen	CD10519	NS 2268 4315	11700	Discharges only during emergency conditions
	Ardrossan Pumping Station CSO and EO	20 mm bar screen	CD10520	NS 2256 4169	17500	Discharges only under exceptionally wet conditions
	CSO Kilbride Bridge West Kilbride	6 mm screen	CD14216	NS 2076 4837	-	As above, to the Kilbride Burn
	CSO Summerlea Road West Kilbride	-	CD10786	NS 196 480	-	As above, to a tributary of the Firth of Clyde
	CSO Glenside Grove West Kilbride	-	RP 959	NS 206 481	-	As above, to the Kilbride Burn
	CSO Meadowfoot West Kilbride	6 mm screen	RP 960	NS 206 481	-	As above, to the Kilbride Burn
	CSO Seamill	-	RP 961	NS 201 469	-	-
Other	Glenfoot House septic tank	Septic Tank	CD11471	NS 215 4525	-	Discharges to the Kirkland Burn
	Portencross septic tanks	Numerous septic tanks	-	From NS190482 to NS175 492	-	-
	Crosbie Towers Caravan Park	Septic Tank	CD 12559 RP 1118	NS 218 500	-	Discharges to the Kilbride Burn

There are no marine cage fish farms within the designated shellfish water.

7.6 Compliance Monitoring Regime

This monitoring regime of the designated area was not fully implemented until the second half of 2005.

Year	Monitoring Regime
2005	<ul style="list-style-type: none"> • Quarterly for Sal, DO, pH, temperature, visible oil • Twice yearly for metals in water • Annually for metals and organohalogenes in mussels • Quarterly for faecal coliforms in mussels

7.7 Compliance History

UKS799237 - Ayrshire Coast				
	Compliance history for Waters and Biota, excluding faecal coliforms data			Compliance history for faecal coliforms
Year	Overall Result	Imperative	Guideline	Guideline
1999	Pass	Pass	Pass	Fail
2000	Pass	Pass	Pass	Fail
2001	Pass	Pass	Pass	Fail
2002	Pass	Pass	Pass	Fail
2003	Pass	Pass	Pass	Fail
2004	Pass	Pass	Pass	Fail
2005	Pass	Pass	Pass	Fail
2006	Pass	Pass	Pass	Fail
2007	Pass	Pass	Pass	Fail
2008	Pass	Pass	Pass	Fail
2009	Pass	Pass	Pass	Fail
2010	Pass	Pass	Pass	Fail

The waters have consistently failed to comply with the Guideline standard for faecal coliforms since 1999 and this was the case again in 2010.

7.8 Future Monitoring

Biannual sampling is continuing at Bellstane and Boydston for metals and organochlorines in waters, annual sampling of mussels for metals and organochlorines and monthly sampling for T, Sal, DO and pH.

In the event of any chemistry parameter failing to meet any I or G EQS in any sample, the site will be revisited and re-sampled for the failed parameter. Samplers

are asked to identify any evidence of visible harm to the shellfish population at the site.

The Ayrshire coast shellfish water will continue to be monitored quarterly for faecal coliforms in mussels.

7.9 Improvement Actions

There are currently no improvement plans for this area.

WFD Objectives

Under the Water Framework Directive, the target objectives expect this shellfish water to Pass by 2015 (first River Basin Management Plan Cycle) for Imperative Shellfish Growing Water Standards with high confidence but the Guideline Shellfish Growing Water Standards is also predicted to pass by 2015 but with low confidence.

Objective	First Cycle 2015	Confidence	Second Cycle 2021	Confidence	Third Cycle 2027	Confidence
Imperative Shellfish Growing Waters Standard	Pass by 2015	High	Pass by 2021	High	Pass by 2027	High
Guideline Shellfish Growing Waters Standard	Pass by 2015	Low	Pass by 2021	Low	Pass by 2027	Low

7.10 Summary of Actions

Action	Deadline
No improvement actions currently planned.	N/A