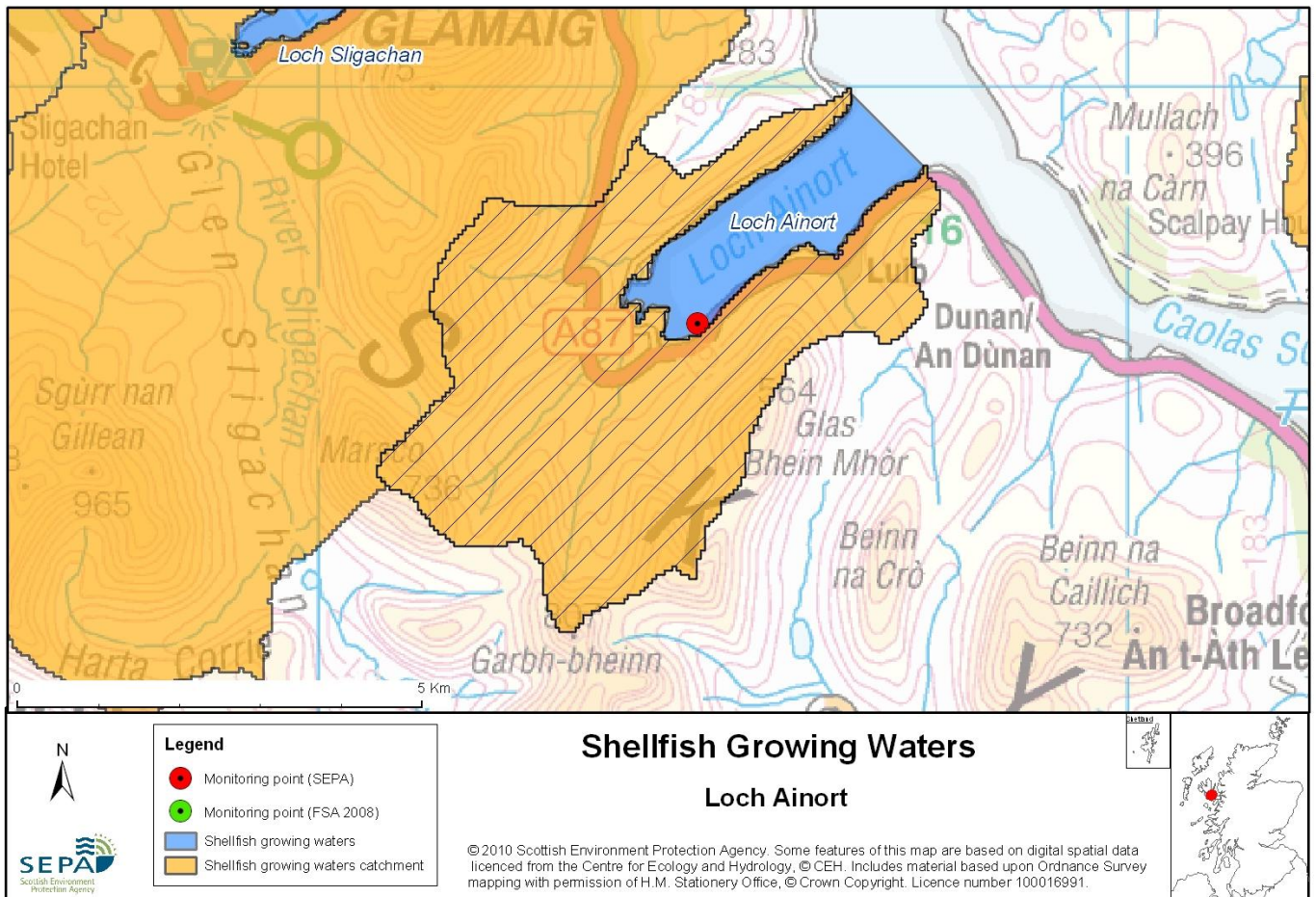


## 62 Loch Ainort



<b>Name</b>	<b>Loch Ainort</b>
<b>Report Reference Number</b>	62
<b>WFD Code</b>	UKS7992362
<b>Local Information</b>	An area inshore of a line between NG5659929901 and NG5748329017, and extending to MHWS.
<b>Designated Area (km<sup>2</sup>)</b>	3.86
<b>Year of Designation</b>	2002
<b>Sampling Points</b>	Loch Ainort, Skye Mussel Site - NG 54694 27077
<b>Commencement of Monitoring</b>	2003

## 62.1 Commercial Shellfish Interests

Loch Ainort was classified as a Shellfish Harvesting Area by the Food Standards Agency (FSA) for the production of King scallops (*Pecten maximus*), this area was de-designated in 2008 and therefore has no associated classification.

FSA have not carried out a sanitary survey for Loch Ainort.

For more information on Food Standards Agency Classification please visit:  
<http://www.food.gov.uk/scotland/safetyhygienescot/shellmonitorscot/shellclassesscot/>

## 62.2 Bathymetric Information

Loch Ainort is situated on the east coast of the Isle of Skye. It has a north east aspect. The area is sheltered from the wind by the islands of Raasay and Scalpay. The loch has a total length of 3.9km, the same length as the shellfish growing area. The catchment area is 25km<sup>2</sup> and has a maximum water depth of 45m. The loch has one sill, which is located at the entrance of the loch. The loch takes 2 days to flush, and fresh/tidal flow ratio indicates a salinity reduction of 0.2 ppt, indicating a low freshwater input to the loch.

## 62.3 Conservation Designations

Loch Sligachan Shellfish Water ([UKS7992387](#)) is to the north of loch Ainort and is designated as a Shellfish Harvesting Area by the FSA.

To the east lies Broadford Bay and Kyle Area Shellfish Waters ([UKS7992311](#)), part of which is designated by FSA.

### **Special Protected Area (SPA) – [Cuillins](#)**

Designated 20/12/2002 for internationally important breeding bird species (Golden eagle (*Aquila chrysaetos*))

This is also a **Water Dependent SPA** and a **Groundwater Dependent SPA**

### **Special Area of Conservation (SAC) – [Sligachan Peatlands](#)**

Designated 17/03/2005 for internationally important habitats - Acid peat-stained lakes and ponds, upland blanket bog, Clear-water lakes or lochs with aquatic vegetation and poor to moderate nutrient levels, Depressions on peat substrates, upland fen, marsh and swamp, Wet heathland with cross-leaved heath

This is also a **Water Dependent SAC** and a **Groundwater Dependent SAC**

### **Sites of Special Scientific Interest (SSSI) – [Cuillins](#)**

Designated 20/08/1985 for Alkaline fen, upland blanket bog, Bryophyte assemblage, Beetles, Flood-plain fen, Open water transition fen, Quaternary geology and geomorphology of Scotland, Subalpine calcareous grassland, Subalpine dry heath, Tall herb ledge

### **Sites of Special Scientific Interest (SSSI) – [Sligachan](#)**

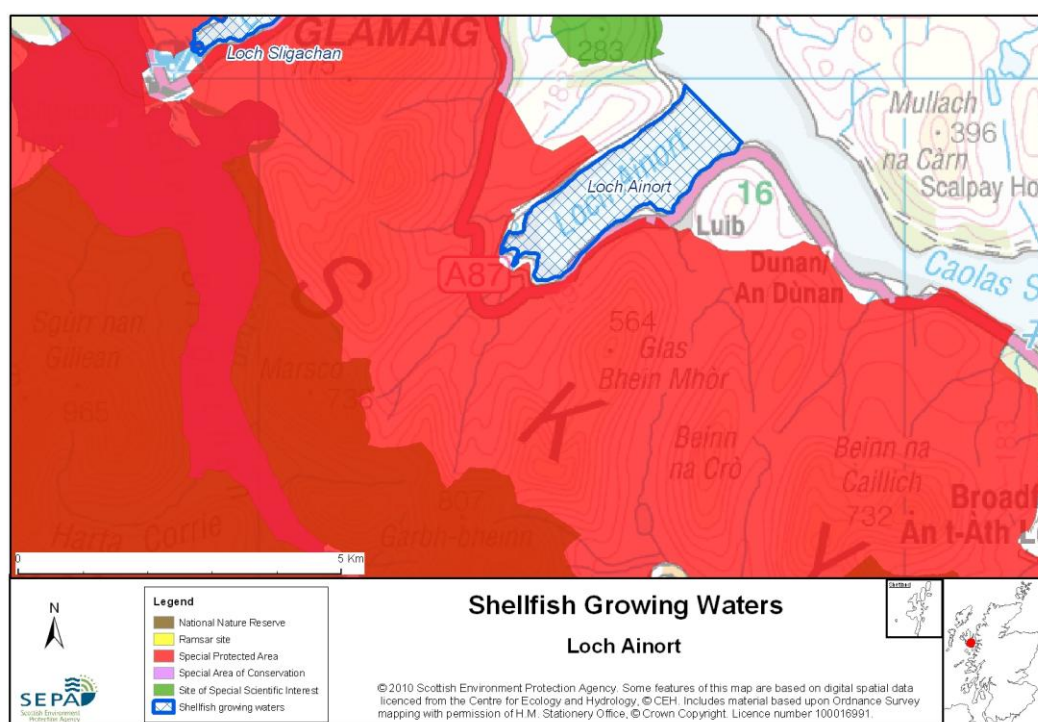
Designated 31/07/1996 for upland blanket bog, Dystrophic and oligotrophic loch types present, Vascular plant assemblage

**Sites of Special Scientific Interest (SSSI) – [Meall a' Mhaoil](#)**  
Designated 20/07/1984 for Igneous petrology (Tertiary Igneous)

**Sites of Special Scientific Interest (SSSI) – [Eyre Point](#)**  
Designated 18/08/1987 for Stratigraphy (Permian Triassic (red beds))

**Sites of Special Scientific Interest (SSSI) – [Raasay](#)**  
Designated 04/02/1987 for Stratigraphy (Aalenian – Bajocian, Hettangian, Sinemurian, Pliensbachian), Dystrophic and oligotrophic loch types present, Geomorphology (Mass movement), Rocky slopes (includes inland cliff, rocky outcrops, chasmophytic vegetation). Upland mosaic assemblage, Upland oak woodland, Vascular plant assemblage

**Site of Special Scientific interest (SSSI) – [Strath](#)**  
Designated 21/08/1986 for Base-rich loch, Mineralogy of Scotland, Igneous petrology (Tertiary Igneous), Upland assemblage (mosaic), Upland birch woodland, Vascular plant assemblage, Molluscs



## 62.4 Topography and Land Use – Potential Diffuse Pollution Sources

Most of the land around the designated area is of heather moorland, with pockets of improved pasture, semi-natural grassland and coniferous plantation. The A87 road runs close along the southeastern shore of Loch Ainort, and on which is Luib, the only settlement in the vicinity of the designated area. A minor road runs along the northwestern shore of Loch Ainort. Freshwater from the eastern slopes of the Red Cuillins, and the northern slopes of Bla Bheinn, runs into the designated area. The major input coming via Abhainn Ceann Loch Ainort. All of the freshwater inputs to the designated area are considered to be of at least good quality, although none are monitored by SEPA.

## 62.5 Point Source Discharge

There is no public sewage provision for the few houses around the designated area and point source discharges are limited to private septic tank outflows from ribbon housing development along the route of the A850. There are no discharges from industrial operations within 2km of the designated area.

There is one fish farm within the designated area with biomass of 1400 tonnes. There is a second within 2km with a biomass of 2250 tonnes.

Category	Name	Consent No.	NGR	Biomass (t)	Additional Information
Fish Farm	Cairidh	CAR/L/1010432-VN1	NG 5600 2890	1400	-

## 62.6 Compliance Monitoring Regime

The following monitoring regime of the designated area was implemented in the second half of 2005.

Year	Monitoring Regime
2005 -	<ul style="list-style-type: none"> <li>• Quarterly for Sal, DO, pH, temperature, visible oil</li> <li>• Every third year for metals and organohalogens in mussels, next collection scheduled for 2011</li> <li>• Quarterly for faecal coliforms in mussels</li> </ul>

## 62.7 Compliance History

UKS7992362 - Loch Ainort				
	Compliance history for Waters and Biota, excluding faecal coliforms data			Compliance history for faecal coliforms
Year	Overall Result	Imperative	Guideline	Guideline
2003	Pass	Pass	Pass	Pass
2004	Pass	Pass	Pass	Pass
2005	Pass	Pass	Pass	Pass
2006	Pass	Pass	Pass	Pass
2007	Pass	Pass	Pass	Pass
2008	Pass	Pass	Pass	Pass
2009	Pass	Pass	Pass	Pass
2010	Pass	Pass	Pass	Pass

All samples have complied with the Guideline Standard for faecal coliforms since 2003

## 62.8 Future Monitoring

The monitoring regime (62.6 Compliance Monitoring Regime) will be followed. In the event of any chemistry parameter failing to meet any EQS, the site will be revisited and resampled for the failed parameter.

Samplers are asked to identify any evidence of visible harm to the shellfish population at the site.

## 62.9 Improvement Actions

There are currently no improvement actions planned for this designated Shellfish Water associated with any point source discharges. SEPA will investigate any environmental complaint that may have an impact on water quality and will ensure appropriate corrective or remedial action is implemented

### WFD Objectives

Under the Water Framework Directive, the target objectives expect this shellfish water to Pass by 2015 (first River Basin Management Plan Cycle) for Imperative and Guideline Shellfish Growing Water Standards, with high confidence.

Objective	First Cycle 2015	Confidence	Second Cycle 2021	Confidence	Third Cycle 2027	Confidence
Imperative Shellfish Growing Waters Standard	Pass by 2015	High	Pass by 2021	High	Pass by 2027	High
Guideline Shellfish Growing Waters Standard	Pass by 2015	High	Pass by 2021	High	Pass by 2027	High

## 62.10 Summary of Actions

Action	Deadline
No specific improvement actions required other than general ongoing monitoring of area in accordance with SEPA's statutory obligations	N/A