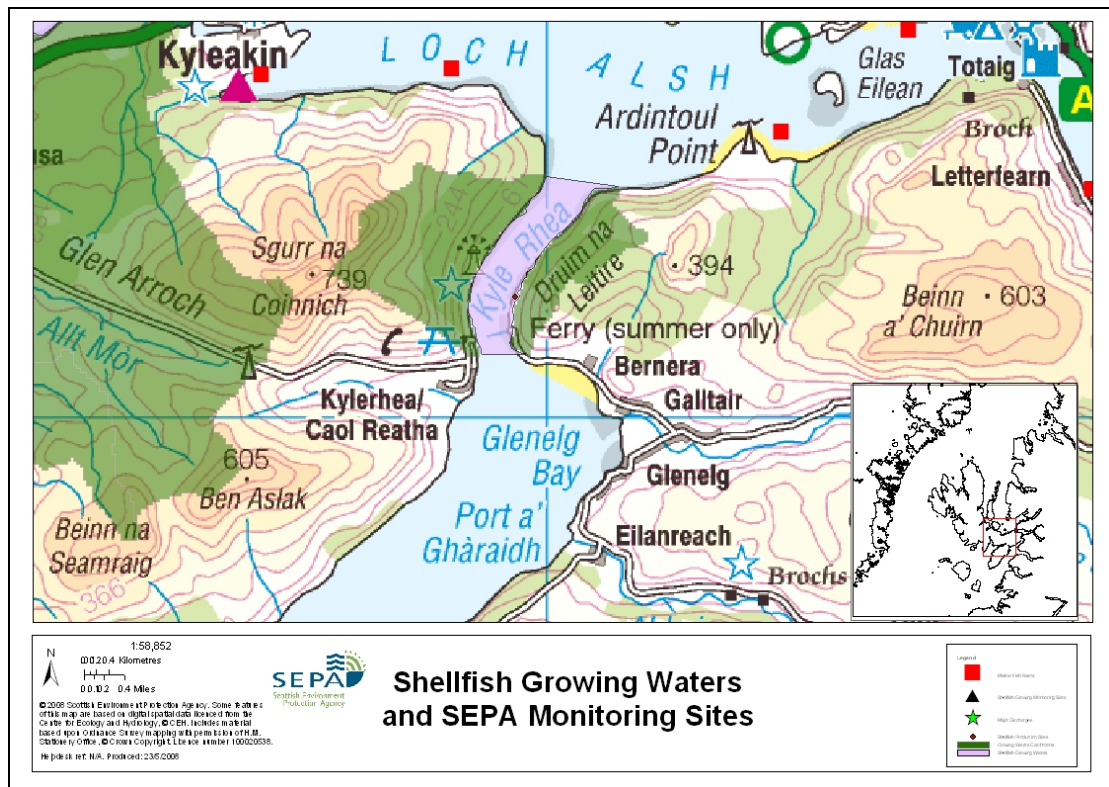


## 57 Kylerhea



<b>Name</b>	Kylerhea	
<b>Report Reference No.</b>	57	
<b>WFD Code</b>	UKS7992357	
<b>Location Information</b>	An area bounded by a line drawn between NG 800 230 and NG 807 237 and between NG 790 210 and NG 796 210.	
<b>Designated Area (Km<sup>2</sup>)</b>	2.1	
<b>Year of Designation</b>	2002	
<b>Sampling Points</b>	Kylerhea	NG 79414 21302
<b>Commencement of Monitoring</b>	2003	

### 57.1 Commercial Shellfish Interests

The growing waters have been declassified for production due to insufficient samples.

### 57.2 Bathymetric Information

Kylerhea is situated on the southeast coast of the Isle of Skye. The growing area is just north of Kylerhea at the narrows at Kyle Rhea, and lies south of Loch Alsh. It is sheltered from south west winds. The growing area is approximately 3.5kms in length

and has a maximum depth of 36m. There are no morphological pressures on the waters.

### 57.3 Conservation Designations

Kyle Rhea is a part of the Lochs Duich, Long and Alsh Reefs SAC. The reefs in Kyle Rhea are subject to some of the strongest tidal streams in the UK, and the bedrock supports rich communities of considerable diversity. Follow the link below for more information.

<http://www.jncc.gov.uk/ProtectedSites/SACselection/sac.asp?EUCode=UK0017077 - SAC>

The Kinloch and Kyleakin hills SAC/SSSI adjoins the designated area. This is an extensive upland site on Torridonian Sandstone, where the lower slopes contain several areas of rocky woodland and wooded ravines varying from acidic oak–birch woodland, to base-rich ash–hazel woodland with a herb-rich ground flora.

[http://gateway.snh.gov.uk/portal/page? pageid=53,854555,53\\_854604& dad=portal & schema=PORTAL&PA\\_CODE=8173](http://gateway.snh.gov.uk/portal/page? pageid=53,854555,53_854604& dad=portal & schema=PORTAL&PA_CODE=8173)

### 57.4 Topography And Land Use – Potential Diffuse Pollution Sources

Most of the land either side of the Kylerhea channel is of coniferous plantation, with heather moorland beyond, and with pockets of improved pasture and of semi-natural woodland. Minor freshwater inputs to the designated area run through the plantations.

### 57.5 Point Source Discharges

There may be point source discharges from single houses into the designated area. There are a small number of private septic tank discharges immediately outside the area at the settlement of Kylerhea and a discharge from the Glenelg public septic tank at approximately 2km distance. A vehicle ferry operates across the Kyle Rhea channel during summer months.

There are no discharges from industrial operations and no fish farms within 2km of the designated area.

### 57.6 Compliance Monitoring Regime

Year	Monitoring Regime
2005 -	<ul style="list-style-type: none"><li>• Quarterly for faecal coliforms in mussels</li><li>• Quarterly for salinity, DO, pH and temperature</li><li>• Every three years for metals and organohalogens in mussels, next collection scheduled for 2008</li></ul>

This monitoring regime of the designated area was implemented in July 2005.

## 57.7 Compliance History

	Compliance History for Waters and Biota, Excluding Faecal Coliforms Data			Compliance History for Faecal Coliforms
Year	Overall Result	Imperative	Guideline	Guideline
2003	Pass	Pass	Fail	Fail
2004	Pass	Pass	Pass	Pass
2005	Pass	Pass	Pass	Pass
2006	Pass	Pass	Pass	*
2007	Pass	Pass	Pass	Pass

Silver was found at a concentration of 1.08 mg/kg in the mussel sample analysed in 2003, which was slightly over the Guideline value of 1.0 mg/kg. This was not repeated in 2004 or 2005, with the results for silver being <0.05 mg/kg and 0.42 mg/kg respectively.

Of the six samples analysed for Faecal Coliforms in 2003 and 2004, two gave results above the Guideline standard. All samples complied with the Guideline standard in 2005.

\* In 2006 and 2007 no mussels were found at the site and consequently, no data for Faecal Coliforms, metals or organohalogen substances in mussel flesh and intervalvular waters have been obtained. Sampling will resume should the mussel population recover.

## 57.8 Future Monitoring Recommendations

The monitoring regime as described in section 6 will be followed. In the event of any chemistry parameter failing to meet any EQS, the site will be revisited and re-sampled for the failed parameter.

## 57.9 Improvement Actions

The value for silver in 2003 was put into context in the light of new data for this site in 2004 and 2005. Further samples have been compliant with the Guideline standard and will continue to be monitored at the site.

There are currently no improvement actions planned for this area.

## 57.10 Summary of Actions

Action	Deadline
No improvement actions currently planned.	