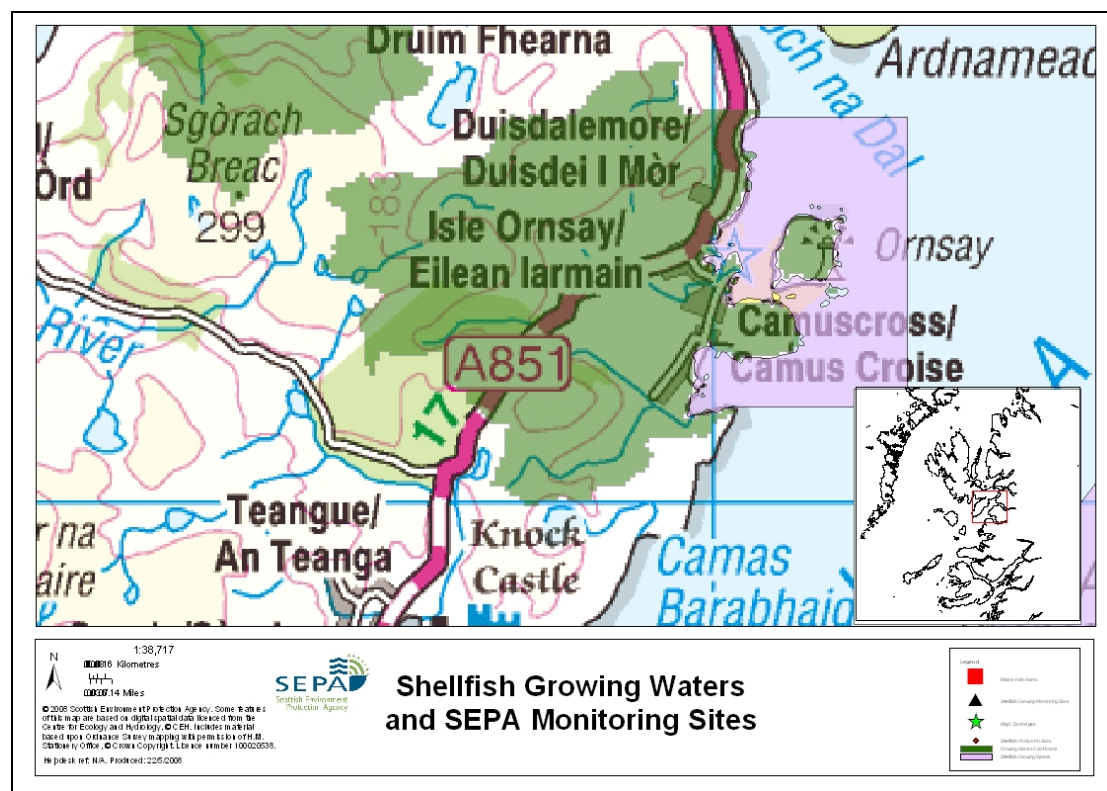


53 Isle Ornsay



Name	Isle Ornsay
Report Reference No.	53
WFD Code	UKS7992353
Location Information	An area bounded by lines drawn between NG 704 140 and NG 720 140 and between NG 720 140 and NG 720 110 and between NG 720 110 and NG 703 110.
Designated Area (Km²)	4.8
Year of Designation	2002
Sampling Points	Isle Ornsay NG 70338 12507
Commencement of Monitoring	2003

53.1 Commercial Shellfish Interests

The waters are currently not classified for the production of shellfish.

53.2 Bathymetric Information

Isle Ornsay is situated on the south east coast of the Isle of Skye. The growing area is short; approximately 3km in length and a proportion of the area is exposed to the south west winds. A small peninsula at Ard Ghunel and the small Isle of Ornsay offer some shelter for the inner part of the growing water area. Maximum water depth is approximately 23m. There are no morphological pressures on the waters.

53.3 Conservation Designations

Airdghunail geological SSSI, an extremely rare example of zoned mineral pod structures occurring within the Lewisian gneisses of the Moine Nappe, lies entirely within the designated area.

http://gateway.snh.gov.uk/portal/page?_pageid=53,854555,53_854604&_dad=portal&_schema=PORTAL&PA_CODE=25

The Kinloch and Kyleakin hills SAC/SSSI adjoins the designated area. This is an extensive upland site on Torridonian Sandstone, where the lower slopes contain several areas of rocky woodland and wooded ravines varying from acidic oak–birch woodland, to base-rich ash–hazel woodland with a herb-rich ground flora. The area between the settlement of Isleornsay and the Isle of Ornsay is designated an Recreational Water for water contact activities.

http://gateway.snh.gov.uk/portal/page?_pageid=53,854555,53_854604&_dad=portal&_schema=PORTAL&PA_CODE=8173

<http://www.jncc.gov.uk/ProtectedSites/SACselection/sac.asp?EUCode=UK0030176>

53.4 Topography And Land Use – Potential Diffuse Pollution Sources

The land bordering the designated area is primarily of improved pasture, with blanket bog, semi-natural grasslands and semi-natural woodlands beyond this coastal strip. The A 851 road runs close to the edge of the designated area, and the settlements of Isleornsay, Camuscross, Duisdalebeg and Duisdalemore are strung out along this coastline. Diffuse pollution is primarily from sheep farming associated with these settlements.

There are a number of minor freshwater inputs to the designated area which are considered to be of at least good environmental quality, although none of these is monitored by SEPA.

53.5 Point Source Discharges

There is no public sewage system serving the houses in the vicinity of the designated area. Consequently private septic tanks discharge either to ground or to the designated area. Scottish Water plans to provide sewage treatment for these houses as part of the infrastructure investment for 2007-2012.

There are no discharges from industrial operations, and there are no fish farms within at least 2km of the designated area.

53.6 Compliance Monitoring Regime

Year	Monitoring Regime
2005 -	<ul style="list-style-type: none">• Quarterly for Sal, DO, pH, temperature, visible oil• Annually for metals and organohalogens in mussels• Quarterly for faecal coliforms in mussels

This monitoring regime of the designated area was implemented in the second half of 2005.

53.7 Compliance History

	Compliance History for Waters and Biota, Excluding Faecal Coliforms Data			Compliance History for Faecal Coliforms
Year	Overall Result	Imperative	Guideline	Guideline
2003	Pass	Pass	Pass	Fail
2004	Pass	Pass	Pass	Fail
2005	Pass	Pass	Pass	Fail
2006	Pass	Pass	Pass	Fail
2007	*Pass	*Pass	*Pass	Fail

The shellfish water has consistently failed to comply with the Guideline standard for faecal coliforms since 2003.

* Very little data available for 2007 but all results complied with Imperative and Guideline standards.

53.8 Future Monitoring Recommendations

The monitoring regime as described in section 6 will be followed. In the event of any chemistry parameter failing to meet any EQS, the site will be revisited and re-sampled for the failed parameter.

53.9 Improvement Actions

There are currently no plans to include Isle Ornsay in Scottish Water's Quality and Standards III programme due to there being no harvesting in the shellfish waters.

53.10 Summary of Actions

Action	Deadline
No improvement actions planned for this area at present.	