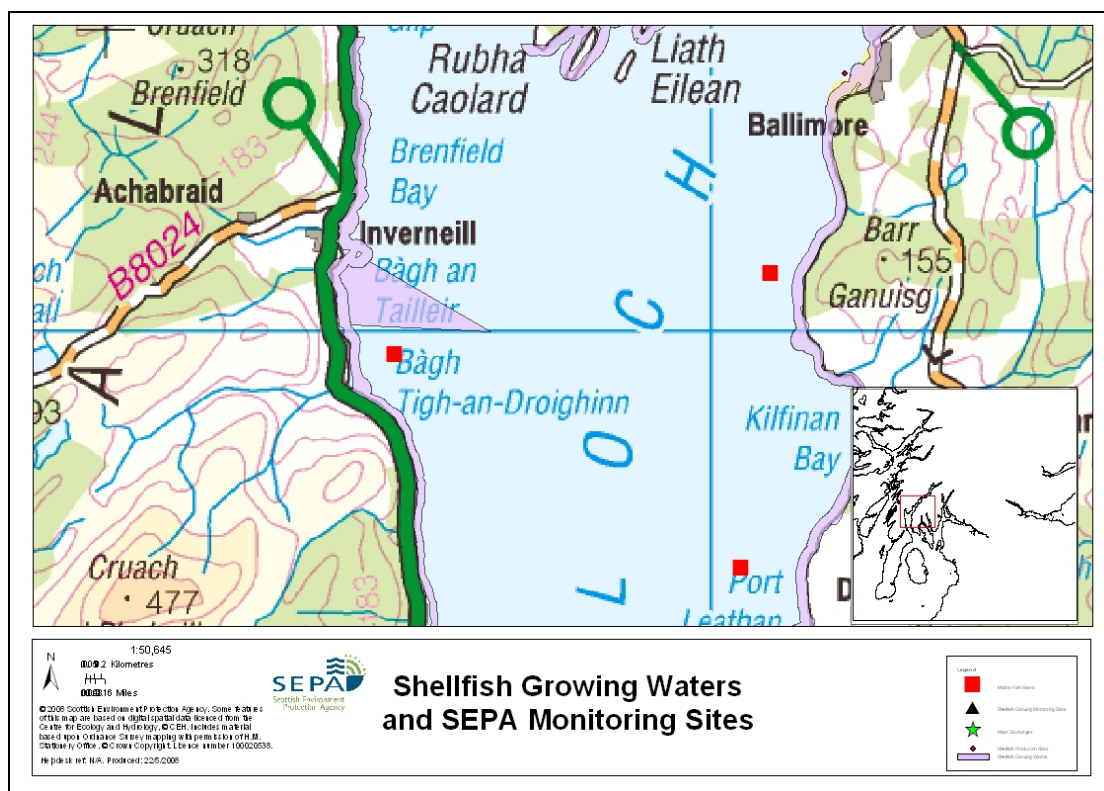


## 52 Inverneill, Loch Fyne



|                                         |                                                                                                                                                                                                    |              |
|-----------------------------------------|----------------------------------------------------------------------------------------------------------------------------------------------------------------------------------------------------|--------------|
| <b>Name</b>                             | Inverneill, Loch Fyne                                                                                                                                                                              |              |
| <b>Report Reference No.</b>             | 52                                                                                                                                                                                                 |              |
| <b>WFD Code</b>                         | UKS7992352                                                                                                                                                                                         |              |
| <b>Location Information</b>             | Inverneill, Loch Fyne designated water is an area inshore of lines drawn between NR 850 801 and NR 870 800 and between NR 870 800 and NR 851 811. The designated water has reasonable road access. |              |
| <b>Designated Area (Km<sup>2</sup>)</b> | 1.2                                                                                                                                                                                                |              |
| <b>Year of Designation</b>              | 2002                                                                                                                                                                                               |              |
| <b>Sampling Points</b>                  | Loch Fyne, Inverneill                                                                                                                                                                              | NR8498380190 |
| <b>Commencement of Monitoring</b>       | 2003                                                                                                                                                                                               |              |

### 52.1 Commercial Shellfish Interests

There is no known commercial shellfish production in the designated waters.

### 52.2 Bathymetric Information

Inverneill is situated on the west coast of Loch Fyne, south of Ardrishaig. The area is sheltered by the Kintyre peninsula from the west and the Island of Arran from the south. The shellfish growing area is approximately 1.5kms and has a maximum depth of approximately 15m. There are no morphological pressures on the waters.

### 52.3 Conservation Designations

There are no conservation areas within the catchment but the Inverneil Burn biological SSSI lies within 2 km of the designated area. For more information follow link to website.

[http://gateway.snh.gov.uk/portal/page?\\_pageid=53,854555,53\\_854604&\\_dad=portal&\\_schema=PORTAL&PA\\_CODE=816](http://gateway.snh.gov.uk/portal/page?_pageid=53,854555,53_854604&_dad=portal&_schema=PORTAL&PA_CODE=816)

### 52.4 Topography And Land Use – Potential Diffuse Pollution Sources

The land bordering the designated area is mainly of semi-natural woodland and improved pasture. Inverneill designated water receives three minor freshwater inflows from its very small catchment of 2 square kilometres. These streams run through coniferous plantations for most of their length, while one also borders land used for extensive livestock production, mainly sheep.

The catchment is sparsely populated, but adjacent to it is the small community of Inverneil, with a core population of 60. The A82 main road runs along the shore of Loch Fyne for much of the shore length of the designated area.

Potential diffuse sources of pollution include run off from agricultural land and forestry.

### 52.5 Point Source Discharges

There are no consented discharges from public sewage systems to the designated area, nor within a distance of at least 2km. Private septic tanks from the settlement of Inverneill are consented to discharge into the Inverneill Burn and into Loch Fyne within 500m of the designated area.

There may be unconsented, private septic tank discharges to the designated water but no problems have been identified. When unconsented discharges are brought to SEPA's attention, appropriate treatment, if necessary is required within a reasonable timescale.

There are no industrial discharges within at least 2km of the designated area.

There are no fish farms within the designated area. There is one marine cage fish farm within 2km of the designated area, which has a consented biomass of 900 tonnes, and this lies within 500m of the designated area.

### 52.6 Compliance Monitoring Regime

| Year  | Monitoring Regime                                                                                                                                                                                                                                                 |
|-------|-------------------------------------------------------------------------------------------------------------------------------------------------------------------------------------------------------------------------------------------------------------------|
| 2005- | <ul style="list-style-type: none"><li>• Quarterly for Sal, DO, pH, temperature, visible oil</li><li>• Every third year for metals and organohalogens in mussels, next collection scheduled for 2008</li><li>• Quarterly for faecal coliforms in mussels</li></ul> |

This monitoring regime of the designated area was implemented in July 2005.

## 52.7 Compliance History

|      | Compliance History for Waters and Biota, Excluding Faecal Coliforms Data |            |           | Compliance History for Faecal Coliforms |
|------|--------------------------------------------------------------------------|------------|-----------|-----------------------------------------|
| Year | Overall Result                                                           | Imperative | Guideline | Guideline                               |
| 2003 | Pass                                                                     | Pass       | Fail      | Fail                                    |
| 2004 | Pass                                                                     | Pass       | Pass      | Fail                                    |
| 2005 | Pass                                                                     | Pass       | Pass      | Pass                                    |
| 2006 | Pass                                                                     | Pass       | Pass      | Fail                                    |
| 2007 | Pass                                                                     | Pass       | Pass      | Fail                                    |

One of the samples of water collected in 2003 had a Dissolved Oxygen value of 79.6%, fractionally below the Guideline value of 80%.

Of the six samples analysed for Faecal Coliforms in 2003 and 2004, three gave results above the Guideline standard. In 2005, only one gave results above the Guideline standard for Faecal Coliforms. The shellfish water failed to comply with the guideline standard in 2006 and 2007.

## 52.8 Future Monitoring Recommendations

The monitoring regime as described in section 6 will be followed. In the event of any chemistry parameter failing to meet any EQS, the site will be revisited and re-sampled for the failed parameter.

## 52.9 Improvement Actions

A number of improvements were made to outfalls in the Lochgilphead and Ardrishaig area under Scottish Water's Quality and Standards II programme including first time sewerage for Tarbert and Ardrishaig and an improved effluent treatment system.

## 52.10 Summary of Actions

| Action                                                                                                         | Deadline               |
|----------------------------------------------------------------------------------------------------------------|------------------------|
| First time sewerage for Tarbert, Ardrishaig and improved effluent treatment system for Lochgilphead/Ardrishaig | Completed under Q&SII. |