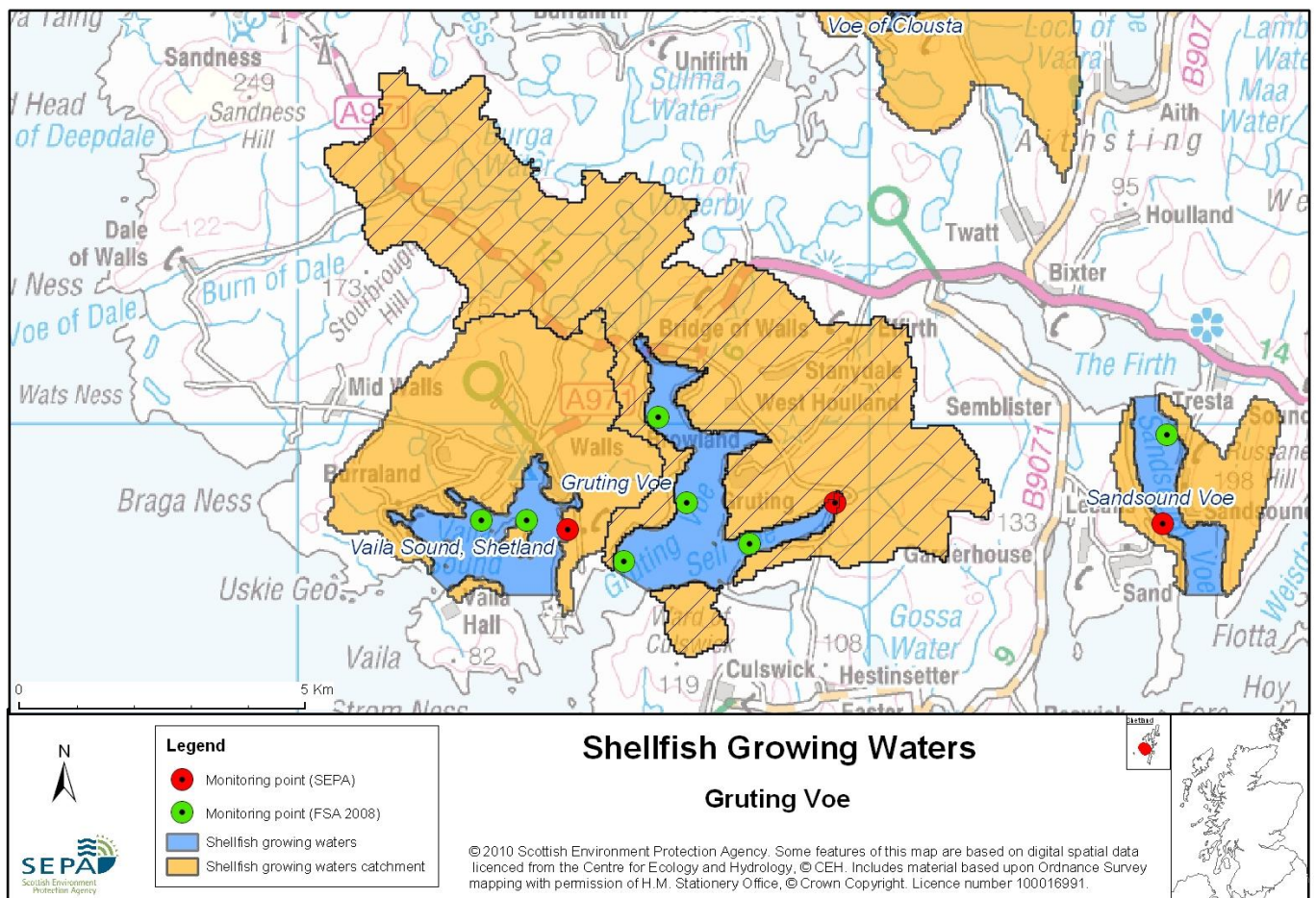


49 Gruting Voe



Name	Gruting Voe
Report Reference Number	49
WFD Code	UKS7992349
Local Information	An area north of a line drawn between 002555347428 (Heock Ness) and 002612847083 extending to MLWS but excluding between HU2747347198 and HU2757547210 (Olas Voe), and extending to MHWS.
Designated Area (km²)	4.93
Year of Designation	2002
Sampling Points	Gruting Voe Mussel Site - HU 29409 48620
Commencement of Monitoring	2003

49.1 Commercial Shellfish Interests

The Majority of the Gruting Voe Shellfish Water is also designated by the Food Standards Agency (FSA) as Shellfish Harvesting Areas for the production of Common mussels (*Mytilus edulis*). There are four FSA Shellfish Harvesting Areas within Gruting Voe, classified as below:

Gruting Voe: Braewick Voe (Common mussels)

2011 = A - April to December

2012 = A - January to March

Gruting Voe: Browland Voe

2011 = A - April to December

2012 = A - January to March

Gruting Voe: Quilse

2011 = A - April to December

2012 = A - January to March

Gruting Voe: Seli Voe

2011 = A - April to August, November & December

B - September & October

2012 = A - January to March

Category A sites are of the highest standard and means that shellfish can go directly for human consumption however category B requires that shellfish must be depurated, heat-treated or re-laid prior to human consumption.

FSA have carried out a sanitary survey for Gruting Voe

For more information on Food Standards Agency Classification please visit:

<http://www.food.gov.uk/scotland/safetyhygienescot/shellmonitorscot/shellclassesscot/>

49.2 Bathymetric Information

Gruting Voe is situated on the west coast of mainland Shetland. The Voe has a southwest aspect which exposes the waters to the south west winds; it is sheltered from the westerly winds by several islands and headlands.

The Voe's total length is 6.6km; with the shellfish growing area approximately 4km in length. The catchment area is 52 km² and has maximum water depth of 40m. The Voe has two sills which divide the loch into two water areas or basins. The first sill is located at Greenhead peninsula near the entrance to the loch and the second sill is located at Marra Ness, closer to the head of the loch. Maximum water depths in each basin are 40m and 15m respectively.

As a whole, the loch takes 9 days to flush but each basin has its own local flushing characteristics, with some deep waters exchanging significantly more slowly than this. Fresh/tidal flow ratio indicates a salinity reduction of 0.5, indicating a low freshwater input to the loch.

49.3 Conservation Designations

This Shellfish Water site contains four designated Food Standards Agency (FSA) Shellfish Harvesting Areas.

To the west of this site is Vaile Sound, Shetland ([UKS7992324](#)). Within this Shellfish Water there are two FSA Shellfish Harvesting Areas.

Sites of Special Scientific Interest (SSSI) – [Ward of Culswick](#)

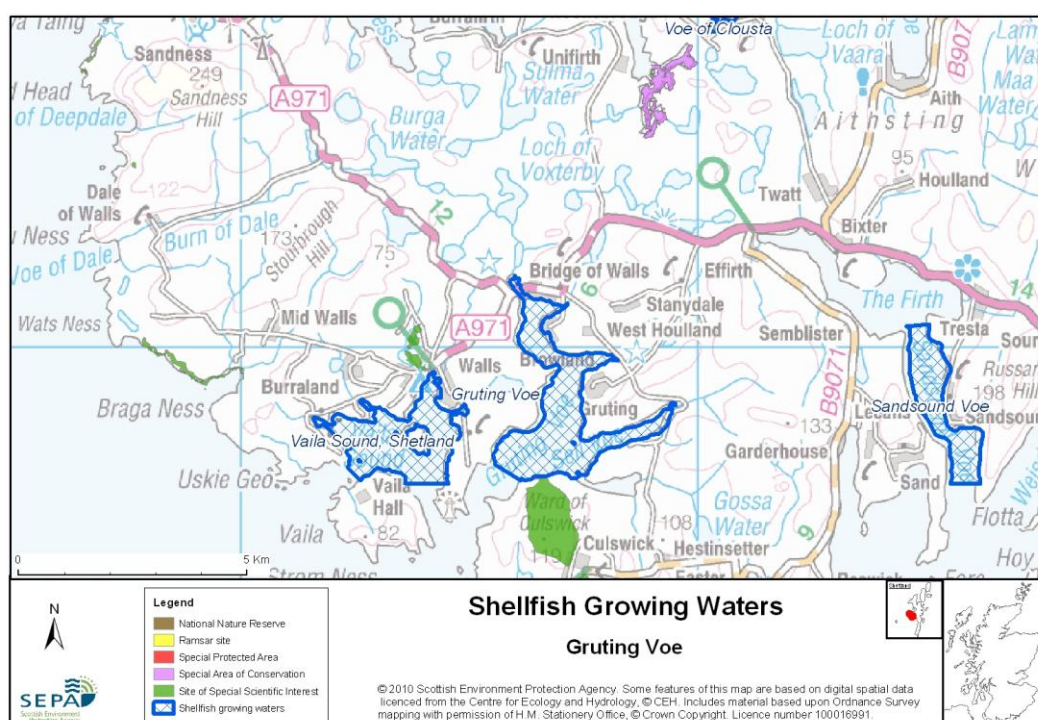
Designated 25/01/1988 for aggregations of breeding birds (Arctic skua (*Stercorarius parasiticus*), Whimbrel (*Numenius phaeopus*))

Sites of Special Scientific Interest (SSSI) – [Culswick Marsh](#)

Designated 10/05/1983 for Fen, marsh and swamp (Wetland)

Sites of Special Scientific Interest (SSSI) – [Lochs of Kirkigarth and Bardister](#)

Designated 10/05/1983 for Standing open water and canals – mesotrophic loch



Gruting Voe – UKS7992349

Last Edited – 01/06/11

Page 3

49.4 Topography and Land Use – Potential Diffuse Pollution Sources

The land surrounding Gruting Voe is of heather moorland, improved pasture, semi natural grassland, blanket bog, wetlands and rough, rocky ground. There are a number of small settlements serviced by the A971 single-track road, which cuts the upper most head of the Voe at the Bridge of Walls.

There are four principal freshwater inputs to the designated area. One of these, Loch of Brouster Burn is classified by SEPA as of excellent environmental quality. The other inputs are not monitored by SEPA but are also considered to be of at least good status.

Run off from livestock farming in the catchment is the most likely source of diffuse pollution.

49.5 Point Source Discharge

There are no Scottish Water point source discharges into the designated area, nor for at least 2km distance from the area. Several private septic tanks and soak-aways contribute to the sewage-related pollution of the designated area. There is a freshwater cage fish farm in Upper Loch of Brouster.

There are four fish farms in the designated area with a combined consented biomass of 2900 tonnes. Immediately outside the designated area are two more fish farms (1495 tonnes), and a further seven fish farms are associated with the neighbouring Vaila Sound.

Category	Name	Consent No.	NGR	Biomass (t)	Additional Information
Fish Farm	Maraness	WPC/N/0062005 *	HU26804940	100	-
	Breiwick	WPC/N/0062004 *	HU26004820	400	-
	Holm Site, Seli Voe	CAR/L/1004032	HU27804780	900	-
	Hogan	CAR/L/1005096	HU26604740	1500	-

* There are no CAR authorisations for these sites.

49.6 Compliance Monitoring Regime

Site	Current Monitoring	Comments
Gruting Voe	<ul style="list-style-type: none"> Quarterly for faecal coliforms in mussels Once every three years for metals and organohalogenes in mussels 	<ul style="list-style-type: none"> Sampled by the FSA

49.7 Compliance History

UKS7992349 - Gruting Voe				
	Compliance history for Waters and Biota, excluding faecal coliforms data			Compliance history for faecal coliforms
Year	Overall Result	Imperative	Guideline	Guideline
2003	Pass	Pass	Pass	Fail
2004	Pass	Pass	Pass	Fail
2005	Pass	Pass	Pass	Fail
2006	Pass	Pass	Pass	Fail
2007	Pass	Pass	Fail ¹	Pass
2008	Pass	Pass	Pass	Pass
2009	Pass	Pass	Pass	Pass
2010	Pass	Pass	Pass	Pass

Of the six samples analysed for Faecal Coliforms in 2003 and 2004, four gave results above the Guideline standard. In 2005, three samples gave results above the Guideline standard. The waters failed to comply with the guideline standard from 2003 to 2006 but passed from 2007 to 2010.

¹Failure due to non-compliance with Guideline standard for g-HCH.

49.8 Future Monitoring

The monitoring regime (49.6 Compliance Monitoring Regime) will be followed. In the event of any chemistry parameter failing to meet any EQS, the site will be revisited and resampled for the failed parameter.

Samplers are asked to identify any evidence of visible harm to the shellfish population at the site.

49.9 Improvement Actions

There are no improvement actions planned for this designated Shellfish Water.

WFD Objectives

Under the Water Framework Directive, the target objectives expect this shellfish water to Pass by 2015 (first River Basin Management Plan Cycle) for Imperative and Guideline Shellfish Growing Water Standards, with high confidence.

Objective	First Cycle 2015	Confidence	Second Cycle 2021	Confidence	Third Cycle 2027	Confidence
Imperative Shellfish Growing Waters Standard	Pass by 2015	High	Pass by 2021	High	Pass by 2027	High
Guideline Shellfish Growing Waters Standard	Pass by 2015	High	Pass by 2021	High	Pass by 2027	High

49.10 Summary of Actions

Action	Deadline
No improvement actions currently planned.	N/A