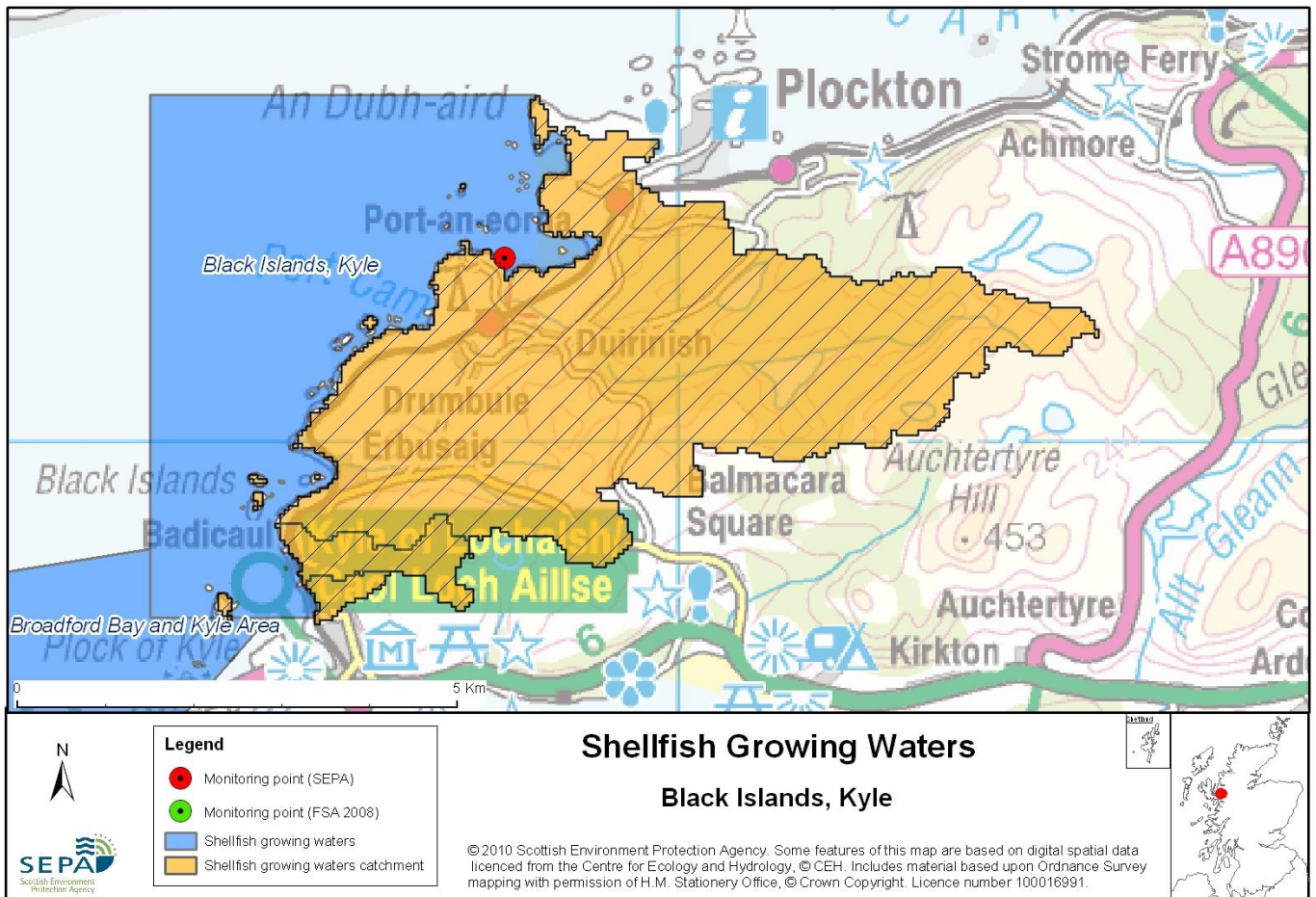


## 36 Black Islands, Kyle



Name	Black Islands, Kyle
Report Reference Number	36
WFD Code	UKS7992336
Local Information	An area bounded by lines drawn between NG7585328000 and NG7400028000, and between NG7400028000 and NG7400033930 and between NG7400033930 and NG7838033930, and extending to MHWS.
Designated Area (km <sup>2</sup> )	16.93
Year of Designation	2002
Sampling Points	Black Islands, Kyle of Lochalsh Mussel Site - NG 78032 32087
Commencement of Monitoring	2003

### 36.1 Commercial Shellfish Interests

The shellfish water is no longer classified for commercial shellfish production. This area was de-designated by the Food Standards Agency (FSA).

FSA have not carried out a sanitary survey for this area.

For more information on Food Standards Agency Classification please visit:

<http://www.food.gov.uk/scotland/safetyhygienescot/shellmonitorscot/shellclassesscot/>

### 36.2 Bathymetric Information

The Black Islands are situated on the west coast between the Kyle of Lochalsh and Plockton peninsula. The Isles lie in the Inner Sound of Raasay and have a sheltered position. The area of the growing waters is approximately 7kms in length. Maximum water depths range from 24m around the Black Islands area to 50-100 m in the Inner Sound of Raasay.

### 36.3 Conservation Designations

The Black Islands, Kyle designated Shellfish Water overlaps slightly in the west with the Broadford Bay and Kyle Area designated Shellfish Water ([UKS7992311](#)). Part of Broadford bay is also designated as a Shellfish Harvesting area by FSA.

North east is Loch Kishorn designated Shellfish Water ([UKS7992328](#)). Part of Loch Kishorn is designated as a Shellfish harvesting Area by FSA.

#### **Special Area of Conservation (SAC) – [Coille Mhor](#)**

Designated 17/03/2005 for Western acidic oak woodland

This is also a **Water Dependent SAC**

#### **Special Area of Conservation (SAC) – [Lochs Duich, Long and Alsh Reefs](#)**

Designated 17/03/2005 for Inshore sublittoral marine rock – reefs

This is also a **Water Dependent SAC**

#### **Site of Special Scientific interest (SSSI) – [Avernish](#)**

Designated 1/09/1984 for Structural and metamorphic geology (moine)

#### **Site of Special Scientific interest (SSSI) – [Ard Hill](#)**

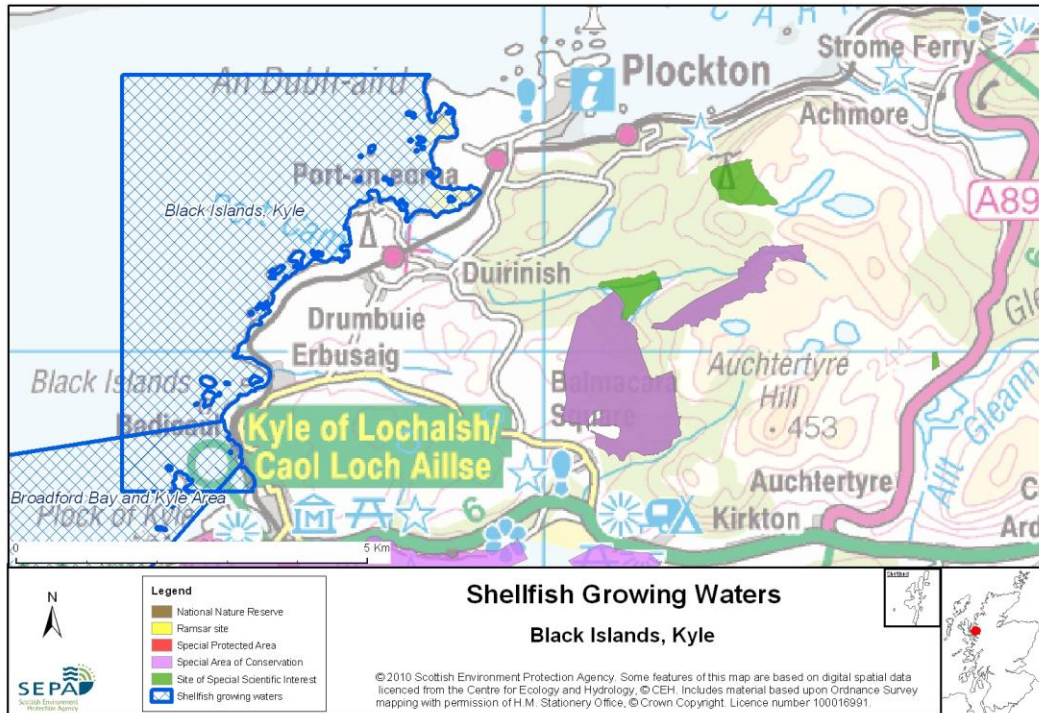
Designated 07/12/1984 for Structural and metamorphic geology (moine)

#### **Site of Special Scientific interest (SSSI) – [Coille Mhor](#)**

Designated 18/09/2000 for Dragonfly assemblage, Oligotrophic loch, Upland oak woodland

#### **Site of Special Scientific interest (SSSI) – [Carn a' Bhealaich Mhoir](#)**

Designated 04/07/1985 for Structural and metamorphic geology (moine)



### 36.4 Topography and Land Use – Potential Diffuse Pollution Sources

The land around the designated area is of rough, rocky land, heather moorland, semi-natural woodland and coniferous plantation. The Kyle of Lochalsh railway runs close to the coastline for much of the designated area. The minor road between Kyle of Lochalsh and Plockton links the settlements of Badicaul, Erbusaig, Drumbuie and Duirinish. Plockton Aerodrome is set on the northern edge of the designated area.

Allt Dhuirinish is the main freshwater input and is classified by SEPA as being of good quality. Other inputs of freshwater are relatively minor, and assumed to be of good quality, although they are not monitored by SEPA.

Run off from agricultural/livestock farming may contribute to the diffuse pollution of the designated area.

### 36.5 Point Source Discharge

Scottish Water discharges treated sewage effluent from a population of up to 1150 to the designated area via four separate systems. In addition, numerous private sewage systems discharge to the designated area. There may also be unconsented private discharges of raw sewage or treated effluent into the designated area and its catchment.

Discharges from the public sewage system and industries in Kyle of Lochalsh and Kyleakin are made to the coastal waters within 2km of the designated shellfish growing area.

Type	Name	Treatment	Consent No.	NGR	PE	Additional Information
Scottish Water Asset	Plockton STW	Primary	CAR/L/1003905	NG 778 331	1002	-
	Drumbuie Village	Primary	CAR/L/1008784	NG 7742731282	120	-
	Duirinish	Pumping Station	WPC/N/0053325*	NG 7845 3145	N/A	-
	Erbusaig	Septic Tank	WPC/N/0055419*	NG 7635 2985	Unsp.	-

\* There are no CAR authorisations for these sites at present.

There are no fish farms in the designated area. There are four fish farms in Loch Alsh.

### 36.6 Compliance Monitoring Regime

The following monitoring regime was implemented in 2005.

Year	Monitoring Regime
2005 -	<ul style="list-style-type: none"><li>• Quarterly for Sal, DO, pH, temperature, visible oil</li><li>• Twice yearly for metals in water</li><li>• Annually for metals and organohalogens in mussels</li><li>• Quarterly for faecal coliforms in mussels</li></ul>

### 36.7 Compliance History

UKS7992336 - Black Islands, Kyle				
	Compliance history for Waters and Biota, excluding faecal coliforms data			Compliance history for faecal coliforms
Year	Overall Result	Imperative	Guideline	Guideline
2003	Pass	Pass	Pass	Fail
2004	Pass	Pass	Pass	Pass
2005	Pass	Pass	Pass	Fail
2006	Pass	Pass	Pass	Fail
2007	Pass	Pass	Pass	Pass
2008	Pass	Pass	Pass	Pass
2009	Pass	Pass	Pass	Pass
2010	Pass	Pass	Pass	Pass

This shellfish water has failed guideline standards for faecal coliforms in the past (2003, 2005 and 2006) but has passed in recent years (2007 – 2010).

### 36.8 Future Monitoring

The monitoring regime (36.6 Compliance Monitoring Regime) will be followed. In the event of any chemistry parameter failing to meet any EQS, the site will be revisited and resampled for the failed parameter.

Samplers are asked to identify any evidence of visible harm to the shellfish population at the site.

### 36.9 Improvement Actions

There are currently no scheduled improvements programmed.

## WFD Objectives

Under the Water Framework Directive, the target objectives expect this shellfish water to Pass by 2015 (first River Basin Management Plan Cycle) for Imperative and Guideline Shellfish Growing Water Standards, with high confidence.

<b>Objective</b>	<b>First Cycle 2015</b>	<b>Confidence</b>	<b>Second Cycle 2021</b>	<b>Confidence</b>	<b>Third Cycle 2027</b>	<b>Confidence</b>
Imperative Shellfish Growing Waters Standard	Pass by 2015	High	Pass by 2021	High	Pass by 2027	High
Guideline Shellfish Growing Waters Standard	Pass by 2015	High	Pass by 2021	High	Pass by 2027	High

### 36.10 Summary of Actions

<b>Action</b>	<b>Deadline</b>
There are currently no scheduled improvements programmed.	N/A