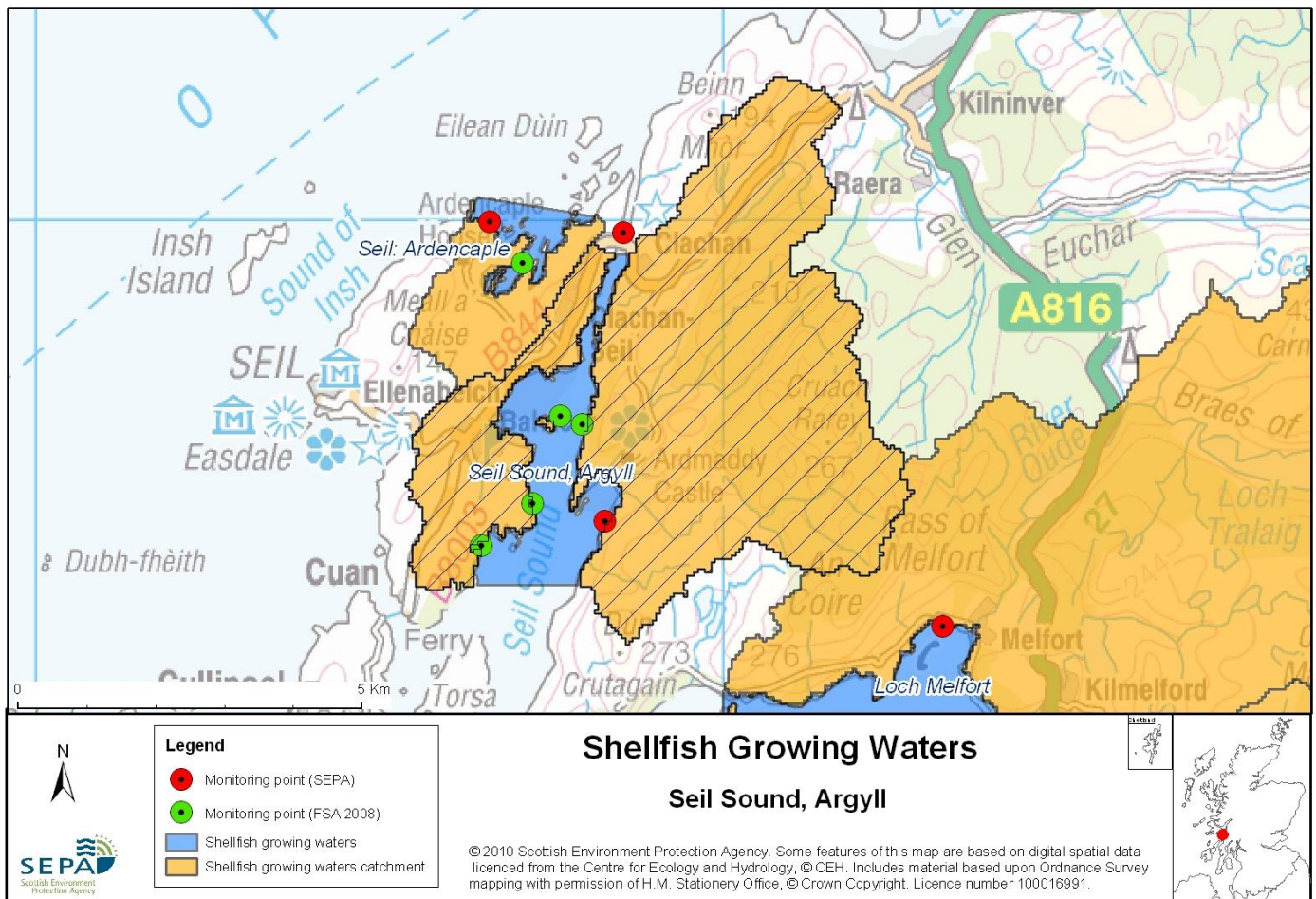


31 Seil Sound, Argyll



Name	Seil Sound, Argyll
Report Reference Number	31
WFD Code	UKS7992331
Local Information	An area bounded by the lines drawn between the points NM7641714700 (Rubha na Moine) and NM7787814700 and between the points NM7844919500 and NM7860219500, and extending to MHWS.
Designated Area (km²)	3.87
Year of Designation	2000
Sampling Points	Seil Sound at Bridge - NM 78550 19809 Seil Armaddy Pier Mussel Site - NM 78282 15618
Commencement of Monitoring	2000

Seil Sound, Argyll – UKS799231

Last Edited – 01/06/11

Page 1

31.1 Commercial Shellfish Interests

Part of Seil Sound is also designated by the Food Standards Agency (FSA) as a Shellfish Harvesting Area.

Seil Sound: Balvicar has four sites (Ardshellach, Balvicar, Balvicar North and Rubhanan Ron South) classified by FSA for the production of Pacific oysters (*Crassostrea gigas*). Balvicar also has one area (East of Balvicar) classified for the production of Common mussels (*Mytilus edulis*).

Seil Sound: Kilbrandon has one site classified for the production of Common mussels.

Seil Sound: Balvicar: All Sites (Pacific oysters)

2011 = A - April & December

B - May to November

2012 = A - January to March

Seil Sound: Kilbrandon (Pacific oysters)

2011 = Declassified

2012 = Declassified

Seil Sound: Balvicar: East of Balvicar (Common mussels)

2011 = A - April to June, October to December

B - July to September

2012 = B - January

A - February to March

Category A sites are of the highest standard and means that shellfish can go directly for human consumption however category B requires that shellfish must be depurated, heat-treated or re-laid prior to human consumption.

FSA have not carried out a sanitary survey for Seil Sound.

For more information on Food Standards Agency Classification please visit:

<http://www.food.gov.uk/scotland/safetyhygienescot/shellmonitorscot/shellclassesscot/>

31.2 Bathymetric Information

Seil Sound is located to the east of Seil Island and Luing with a narrow tidal link at its northern extremity. The water is subject to strong tidal action and a tidal race forms at this narrow point. The designated water faces SSW and has a length of 0.75 km.

The average depth is between 20 - 25 m but some deep spots reach 36 m. There are no morphological pressures on the area.

31.3 Conservation Designations

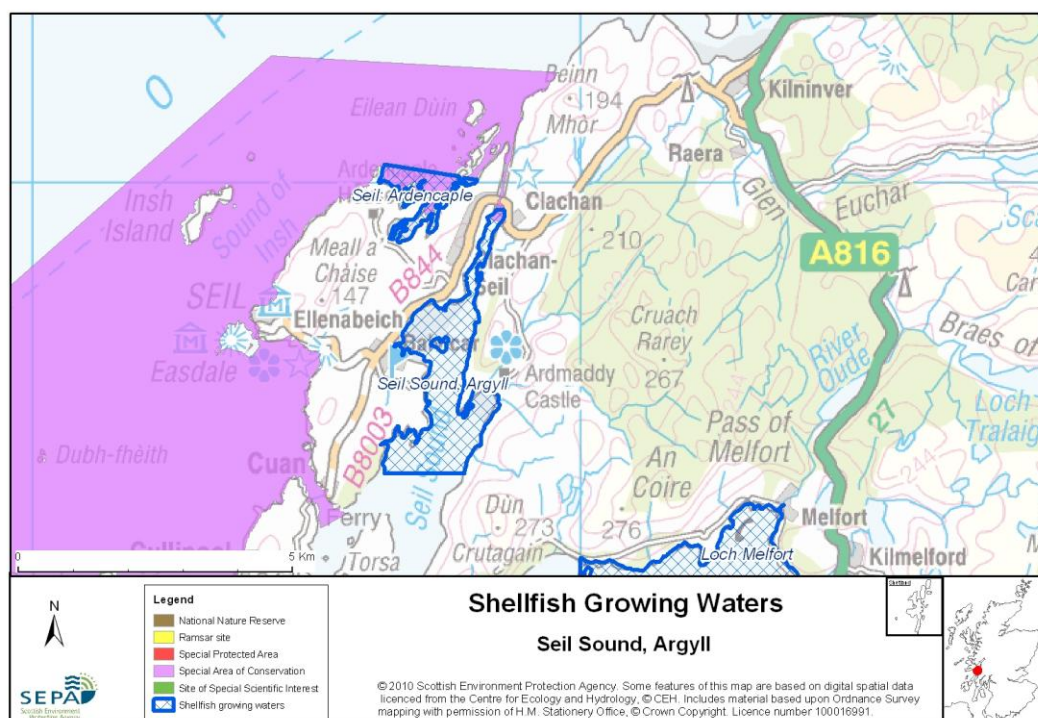
Part of Seil Sound is also designated as a Shellfish Harvesting Area by the Food Standards Agency (FSA).

North of Seil Sound is the Seil: Ardencaple ([UKS7992313](#)) designated Shellfish Water, which is also designated as a FSA Shellfish Harvesting Area.

Special Area of Conservation (SAC) – [Firth of Lorn](#)

Designated for 17/03/2005 for internationally important Marine Inshore sublittoral rock (Reefs)

This is also designated a **Water Dependent SAC**



31.4 Topography and Land Use – Potential Diffuse Pollution Sources

Seil Sound is a narrow stretch of water between Seil Isle and the mainland. The Shellfish Water extends south from Clachan Bridge to Port Mor and includes Balvicar Bay and Ardmaddy Bay. Much of the land on Seil Isle is covered by grasses/rushes, only part of which is used for pasture. Large areas of the mainland to the east are afforested.

There are no major freshwater inputs to the Shellfish Water. There are a handful of homes or farmhouses close to the B8003 road on Seil. The small settlement of Balvicar lies off the western shore of Seil Sound.

The most likely reason for past failure of this designation is diffuse source pollution from either sewage disposal and/or livestock farming. Bacterial source tracking may be required to ascertain the origin of diffuse source pollution if failures continue.

31.5 Point Source Discharge

Type	Name	Treatment	Consent No.	NGR	PE	Additional Information
Scottish Water Asset	Clachan-Seil Balvicar Sewerage System	Extended aeration + membrane filtration	CAR/L/1034089	NM 7742 1748	500	New collector sewer and treatment system (membrane filtration) installed under Q&SIII
Category	Name		Consent No.	NGR	Biomass (t)	Additional Information
Fish Farm	Ardmaddy		CAR/L/1010472-VN3	NM 7780 1460	1300	-

There is one marine cage fish farm in Seil Sound, which is just on the border of the designated shellfish water. The site has a total consented biomass for salmon of 1300 tonnes.

31.6 Compliance Monitoring Regime

The following monitoring regime of the designated area was implemented in July 2005

Year	Monitoring Regime
2005 -	<ul style="list-style-type: none"> • Quarterly for Sal, DO, pH, temperature, visible oil • Twice yearly for metals in water

31.7 Compliance History

UKS7992331 - Seil Sound, Argyll				
	Compliance history for Waters and Biota, excluding faecal coliforms data			Compliance history for faecal coliforms
Year	Overall Result	Imperative	Guideline	Guideline
2000	Pass	Pass	Pass	Fail
2001	Fail	Fail ¹	Pass	Fail
2002	Pass	Pass	Pass	Fail
2003	Pass	Pass	Pass	Fail
2004	Pass	Pass	Pass	Fail
2005	Pass	Pass	Pass	Fail
2006	Pass	Pass	Pass	Fail
2007	Pass	Pass	Pass	Fail
2008	Pass	Pass	Pass	Fail
2009	Pass	Pass	Pass	Fail
2010	Pass	Pass	Fail ²	Fail

¹Failure relates to a single sample taken from Seil Sound in June 2001. The result of 6.6 for pH failed the Imperative standard of 7-9. This result may have been due to heavy rainfall or increased fresh water at the site at the time. There did not appear to be any harm to local shellfish populations. There have been no further failures for pH at this location. All other results for all physico-chemical parameters have met guideline standards.

²Failure in 2010 for guideline threshold for salinity.

The waters have consistently failed to comply with the Guideline standards for faecal coliforms since monitoring began in 2000.

31.8 Future Monitoring

Biannual sampling is continuing for metals and organochlorines in water along with monthly sampling for T, Sal, DO and pH in water at Seil Sound and Armaddy Pier. Mussels will be collected annually from Armaddy Pier for metals and organohalogen analysis.

In the event of any chemistry parameter failing to meet any EQS, the site will be revisited and re-sampled for the failed parameter. Samplers are asked to identify any evidence of visible harm to the shellfish population at the site.

Seil Sound ECSGW will continue to be monitored quarterly for faecal coliforms in mussels.

31.9 Improvement Actions

The existing septic tanks in the Clachan-Seil area were replaced by ,new sewerage and a treatment system. This was installed as part of Scottish Water's Q&SIII investment programme. Balvicar and Seil are served by a shared collector sewer and treatment has been upgraded to membrane filtrations plant.

WFD Objectives

Under the Water Framework Directive, the target objectives expect this shellfish water to Pass by 2015 (first River Basin Management Plan Cycle) for Imperative Shellfish Growing Water Standards, with high confidence.

The Guideline Shellfish Growing Water Standards is not predicted to pass until the Third River Basin Management Cycle in 2027, with low confidence. This is due to repeated failure of the faecal coliform guideline standards.

Objective	First Cycle 2015	Confidence	Second Cycle 2021	Confidence	Third Cycle 2027	Confidence
Imperative Shellfish Growing Waters Standard	Pass by 2015	High	Pass by 2021	High	Pass by 2027	High
Guideline Shellfish Growing Waters Standard	Fail by 2015	Low	Fail by 2021	Low	Pass by 2027	Low

31.10 Summary of Actions

Action	Deadline
Clachan-Seil septic tanks replaced by new sewerage and treatment system under Q&SIII.	Done
Balvicar and Seil combined system upgraded to membrane filtration plant	Done