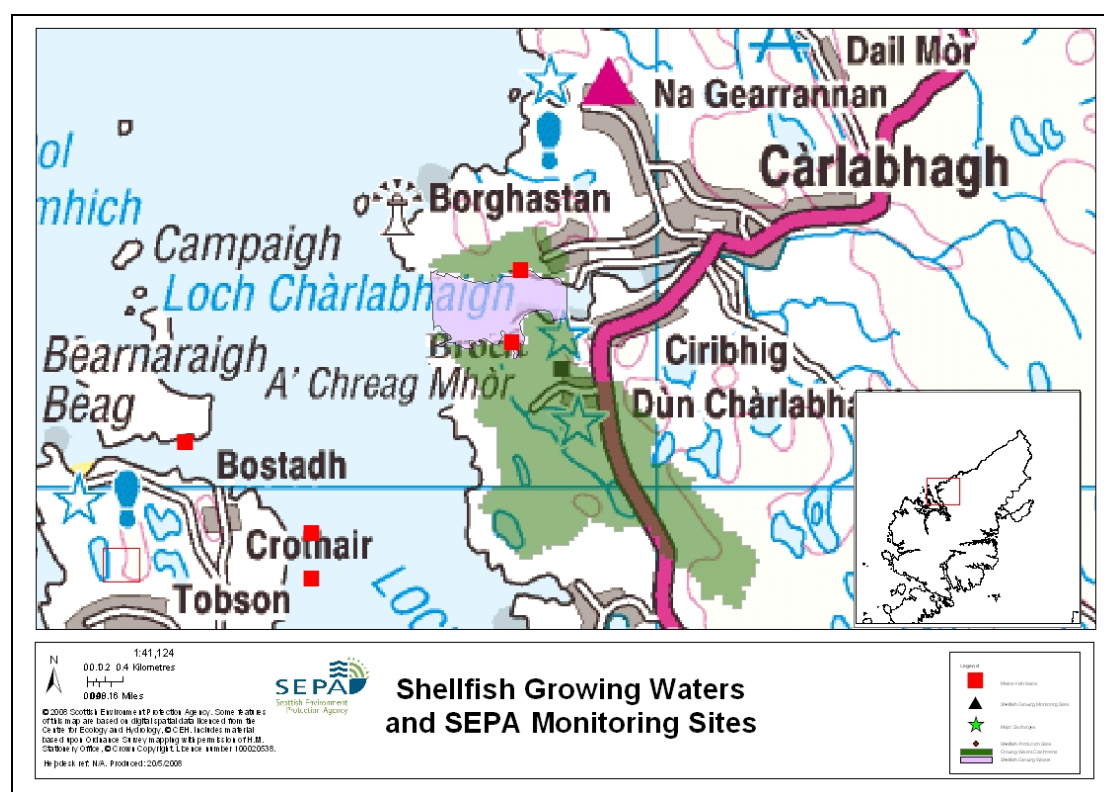


22 East Loch Roag (Loch Carloway) - Western Isles



Name	Loch Carloway	
Report reference no.	22	
WFD Code	UKS7992322	
Location Information	An area between lines drawn between the points NB 175 418 and NB 175 424 and between NB 190 419 and NB 190 423	
Designated area (km²)	0.9	
Year of designation	1998	
Sampling points	Loch Carloway	NB 187 420
Commencement of monitoring	1998	

22.1 Commercial Shellfish Interests

Three Crown Estates Commission (CEC) leases have been granted, though these have not been taken up. The area is not classified for production.

22.2 Bathymetric Information

Loch Carloway lies at the outer extreme edge of the Loch Roag complex, has a total length of 3 km and faces due west. The shellfish water comprises the outer 2 km. The loch is narrow and steep sided and has a catchment area of approximately 45 km². There are no discrete basins in this loch and maximum water depth is 17 m.

The average flushing time for Loch Carloway is 2 days. Fresh/tidal flow ratio, which reflects the degree of possible influence of freshwater on the overall salinity is high (1.0) for the size of the loch. There are no morphological pressures on the area.

22.3 Conservation Designations

There are no relevant designations either within or adjacent to this shellfish water.

22.4 Topography and Land Use – Potential Diffuse Pollution Sources

The land bordering the loch comprises a mixture of heather moorland, blanket bog and rough, rocky ground. There is some improved pasture land just to the east of the designated shellfish water. There are no significant human settlements. The relatively minor freshwater inputs are assumed to be of good quality, although they are not monitored by SEPA.

22.5 Point Source Discharges

There are no significant point source sewage discharges into the designated area.

Two marine cage fish farms are located within this shellfish water, one on the north side and one on the south side. These farms have a total consented salmon biomass of 750t.

Name	Category	Consent No.	NGR	Biomass (t)
Laimishader	Fish farm	CAR/L/1004211	NB 185 424	250
Port Naduna	Fish farm	CAR/L/1004212	NB 184 416	500

22.6 Compliance Monitoring Regime

Year	Monitoring Regime
2005 -	<ul style="list-style-type: none"> No longer monitored due to absence of mussels at site

This monitoring regime of the designated area was not fully implemented until the second half of 2005.

22.7 Compliance History

	Compliance history for Waters and Biota, excluding faecal coliforms data			Compliance history for faecal coliforms
	Overall Result	Imperative	Guideline	Guideline
1998	Pass	Pass	Pass	Not monitored
1999	Pass	Pass	Fail ¹	Fail
2000	Pass	Pass	Fail ¹	No shellfish
2001	Pass	Pass	Pass	No shellfish
2002	Pass	Pass	Fail ¹	No shellfish
2003	Pass	Pass	Pass	No shellfish
2004	Pass	Pass	Pass	No shellfish
2005	Pass	Pass	Pass	No shellfish
2006	Pass	Pass	Pass	No shellfish
2007	Pass	Pass	Pass	Pass

¹ Dissolved oxygen percent saturation levels were generally high such that the G standard was met in 1998 and 2001 and in 1999, 2000 and 2002, waters met the I standard though the G standard was breached.

There are no shellfish at the monitoring site so no results are available for faecal coliforms. Sampling will resume should the shellfish population recover.

22.8 Future Monitoring Recommendations

The monitoring regime as described in section 6 will continue. In the event of any chemistry parameter failing to meet any EQS, the site will be revisited and re-sampled for the failed parameter.

22.9 Improvement Actions

There are currently no improvement actions planned for this area.

22.10 Summary of Actions

Action	Deadline
No improvement actions currently planned.	