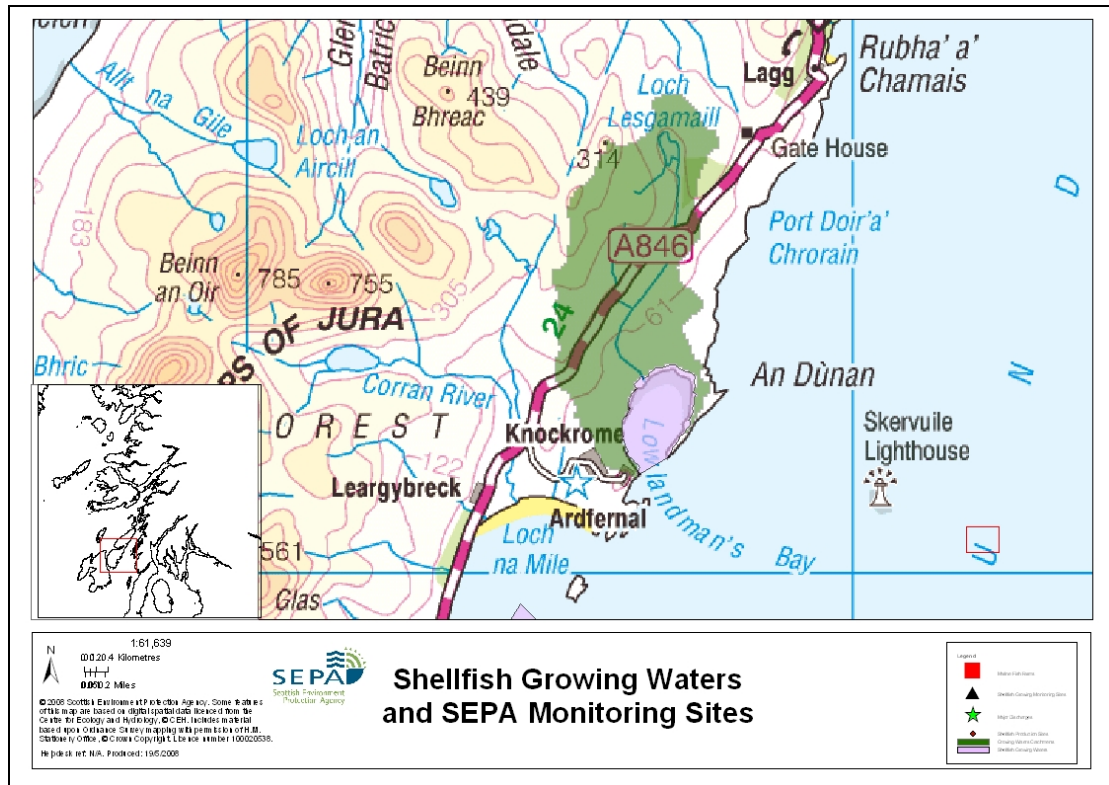


16 Lowlandmans Bay (Jura)



Name	Lowlandmans Bay (Jura)	
Report reference no.	16	
WFD Code	UKS7992316	
Location Information	An area inshore of a line drawn between the points NR 564 716 (Sron Garbh) and NR 569 719 (Rubh 'an Leim)	
Designated area (km²)	1.5	
Year of designation	1998	
Sampling points	Jura, Lowlandman's Bay	NR 562 724
Commencement of monitoring	1999	

16.1 Commercial Shellfish Interests

There is no known interest in commercial shellfish in this area.

16.2 Bathymetric Information

Lowlandmans Bay is situated on the east coast of Jura and lies just off the Sound of Jura. It has a maximum water depth of approximately 8 m. The total length of the bay is approximately 1.5 km. Waters in the sound of Jura are generally highly dynamic but localised conditions will vary from place to place. There are no morphological pressures in the area.

16.3 Conservation Designations

There are no SAC, RAMSAR or SSSI designations within 2 km of the area.

16.4 Topography and Land Use – Potential Diffuse Pollution Sources

The majority of immediate land use consists of grass/rushes and some blanket bog/peat. Most of the land further out, surrounding the bay area, consists of heather moor. There are no major freshwater inputs to the bay. The area is very sparsely populated.

16.5 Point Source Discharges

There are no significant point source discharges to the designated shellfish area, although there are some farms in the land catchment. There are no marine cage fish farms within the designated shellfish water.

16.6 Compliance Monitoring Regime

Year	Monitoring Regime
2005-	<ul style="list-style-type: none">No monitoring

This monitoring regime of the designated area was implemented in July 2005.

16.7 Compliance History

Year	Compliance history for Waters and Biota, excluding faecal coliforms data			Compliance history for faecal coliforms
	Overall Result	Imperative	Guideline	Guideline
1999	Pass	Pass	Pass	No data
2000	Pass	Pass	Pass	
2001	Pass	Pass	Pass	
2002	Pass	Pass	Pass	
2003	Pass	Pass	Pass	
2004	Pass	Pass	Pass	
2005	Pass	Pass	Pass	
2006	Pass	Pass	Pass	No data available
2007	Pass	Pass	Pass	Pass

NB. Mussels are not sampled at this site for annual parameters or faecal coliforms, due to absence of natural populations.

16.8 Future Monitoring

Biannual sampling is continuing for metals and organochlorines in waters. This site will also be monitored quarterly for T, Sal, DO and pH in water. In the unlikely event of any sample failing to meet any of the chemistry quality standards, the site will be

revisited and re-sampled for the failed parameter. Samplers are asked to identify any evidence of visible harm to flora and fauna in the absence of mussels at this site.

16.9 Improvement Actions

There are currently no improvement actions planned for this area.

16.10 Summary of Actions

Action	Deadline
No improvement actions currently planned.	