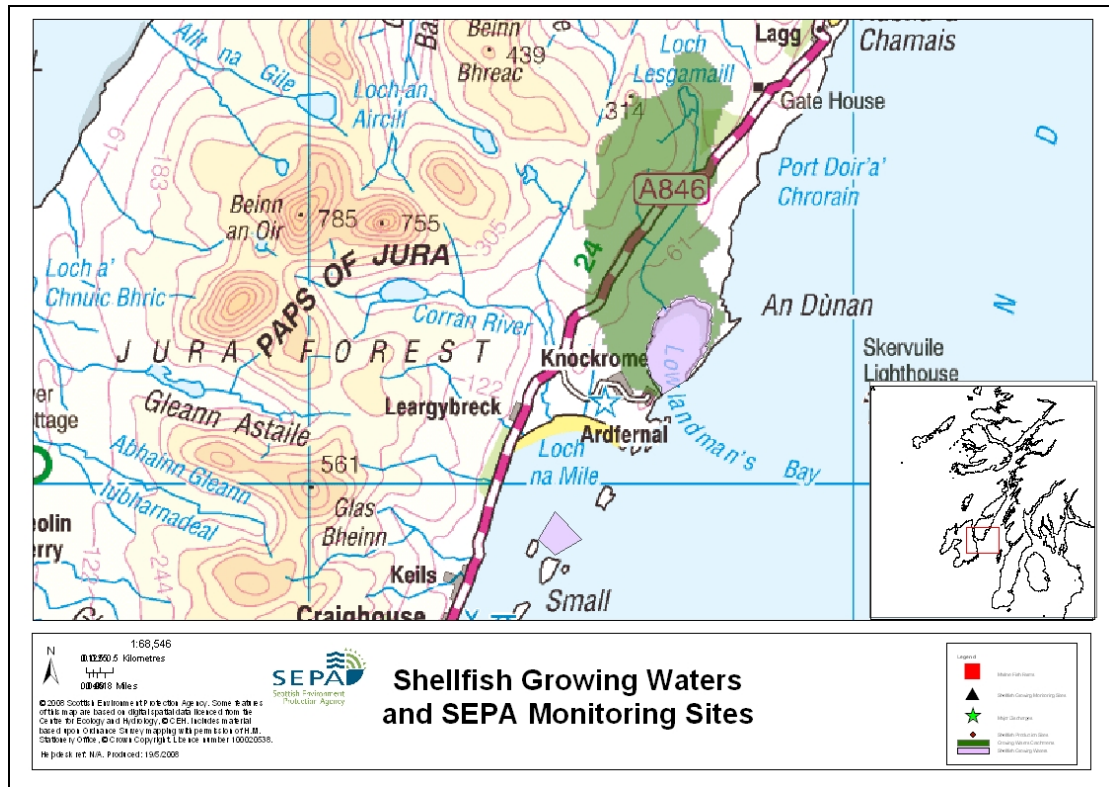


## 15 Small Isles Bay, Jura



<b>Name</b>	Small Isles Bay, Jura	
<b>Report reference no.</b>	15	
<b>WFD Code</b>	UKS7992315	
<b>Location Information</b>	An area bounded by lines drawn between the points NR 542 690 (Pladda) and NR 545 695 and between NR 545 695 and NR 550 690 and between NR 545 687 (Eilean nan Coinein) and NR 542 690	
<b>Designated area (km<sup>2</sup>)</b>	0.32	
<b>Year of designation</b>	1998	
<b>Sampling points</b>	Jura, Small Isles Bay	NR 543 689
<b>Commencement of monitoring</b>	1999	

### 15.1 Commercial Shellfish Interests

There is no known commercial interest in shellfish in this area.

### 15.2 Bathymetric Information

The Small Isles are situated on the east coast of Jura and lie within Loch na Mile bay, on the Sound of Jura. Water depth around this bay is approximately 1-12 m. The total length of this bay is approximately 2.6 km. This bay is sheltered from prevailing West – South West winds. Waters in the sound of Jura are generally highly dynamic

but localised conditions will vary from place to place. There are no morphological pressures on the area.

### 15.3 Conservation Designations

There are no SAC, RAMSAR or SSSI designations within 2 km of the area.

### 15.4 Topography and Land Use – Potential Diffuse Pollution Sources

The five small islands in this bay lie just off the south-eastern coast of Jura. The islands themselves consist mostly of grassland and some heather. The majority of land use in the surrounding bay consists of heather/moor land, however there are areas of pasture and mixed woodland. There are no major freshwater bodies on the islands. The area is very sparsely populated.

### 15.5 Point Source Discharges

There are no major point source discharges to the designated shellfish area, although there are some farms.

There are no marine cage fish farms within the designated shellfish water.

### 15.6 Compliance Monitoring Regime

Year	Monitoring Regime
2005-	<ul style="list-style-type: none"> <li>Quarterly for Sal, DO, pH, temperature, visible oil</li> <li>Every three years for metals and organohalogens in mussels, next scheduled collection 2008</li> <li>Quarterly for faecal coliforms in mussels</li> </ul>

This monitoring regime of the designated area was implemented in July 2005.

### 15.7 Compliance History

Year	Compliance history for Waters and Biota, excluding faecal coliforms data			Compliance history for faecal coliforms
	Overall Result	Imperative	Guideline	Guideline
1999	Pass	Pass	Pass	Fail
2000	Pass	Pass	Pass	Fail
2001	Pass	Pass	Pass	No Data
2002	Pass	Pass	Pass	No Data
2003	Pass	Pass	Pass	Fail
2004	Pass	Pass	Pass	Fail
2005	Pass	Pass	Pass	Fail
2006	Pass	Pass	Pass	Pass
2007	Fail	Fail <sup>1</sup>	Pass	Fail

<sup>1</sup>Failure relates to the Shellfish Water's imperative result (single fail) of 6.68 for pH taken in water at Jura Small Isles Bay @ Jetty in April 2007. This single breach of the mandatory standard for pH (7-9) has resulted in an overall fail at this site in 2007.

The waters complied with the Guideline standard for faecal coliforms in 2006 but have failed on the other occasions where data were available. The waters failed to comply with the standard again in 2007.

### **15.8 Future Monitoring**

Biannual sampling is continuing for metals and organochlorines in waters along with annual sampling of mussels for organohalogens and metals. This site will be monitored quarterly for T, Sal, DO and pH in water.

In the event of any chemistry parameters failing to meet require EQS, the site will be revisited and re-sampled for the failed parameter. Samplers are asked to identify any evidence of visible harm to the shellfish population at the site.

Quarterly monitoring for FC in mussels recommenced in 2003 and will continue.

### **15.9 Improvement Actions**

There are currently no improvement actions planned for the area.

### **15.10 Summary of Actions**

<b>Action</b>	<b>Deadline</b>
No improvement actions currently planned.	