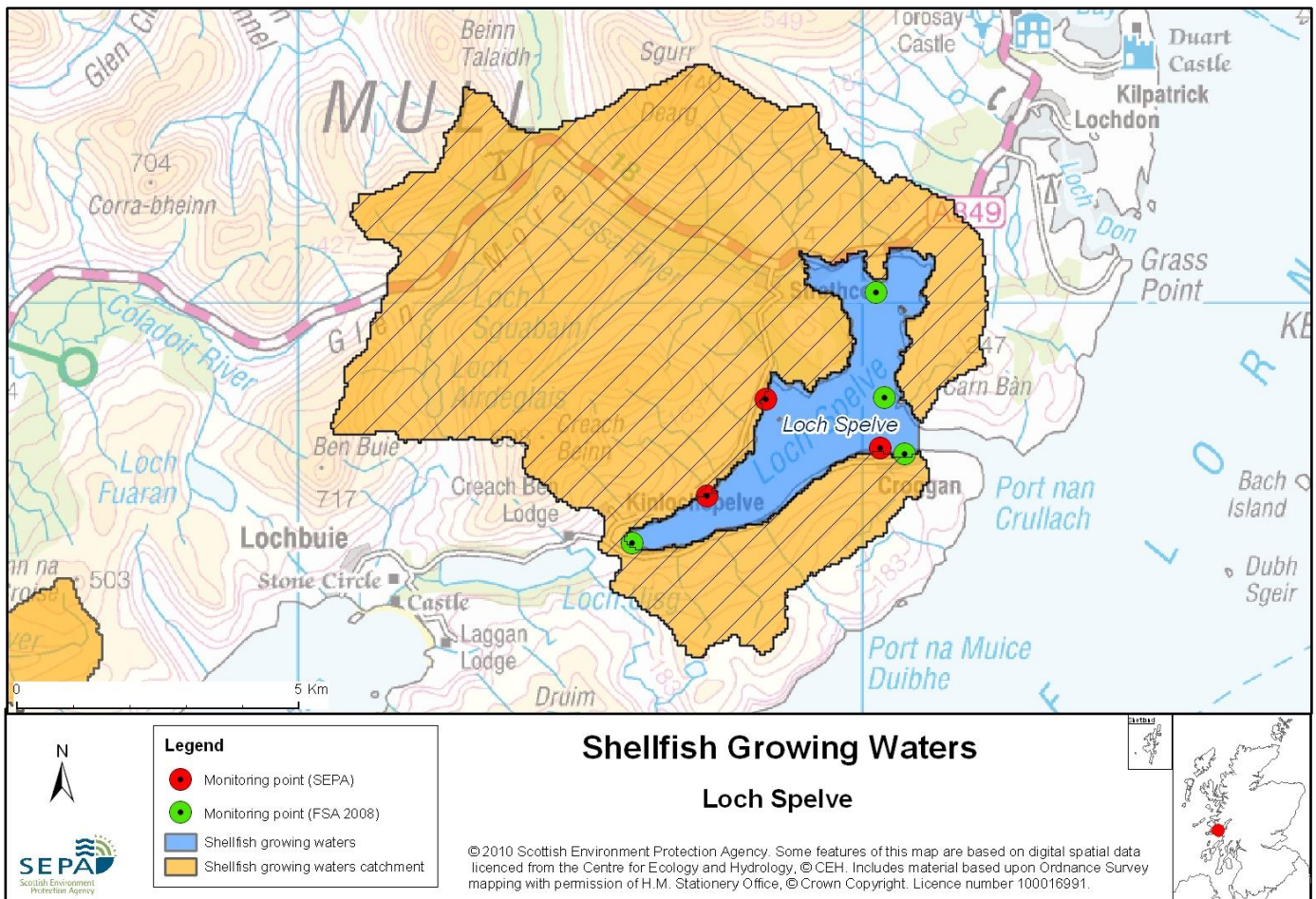


14 Loch Spelve



Name	Loch Spelve
Report Reference Number	14
WFD Code	UKS7992314
Local Information	An area to the west of a line drawn between NM7100027924 and NM7100027383 and extending to MHWS.
Designated Area (km²)	8.93
Year of Designation	1998
Sampling Points	Loch Spelve at Camas Mussel Site - NM 68300 28300 Loch Spelve at Croggan Mussel Site - NM 70324 27431 Loch Spelve Fish Farm Mussel Site - NM 67250 26582
Commencement of Monitoring	1999

Loch Spelve – UKS7992312

Last Edited – 01/06/11

Page 1

14.1 Commercial Shellfish Interests

There are three Food Standards Agency (FSA) Shellfish Harvesting Areas within Loch Spelve, classified for the production of Common mussels (*Mytilus edulis*)

Loch Spelve: Croggan Pier (Common mussels)

2011 = A - April to June

B - July to December

2012 = A - January to March

Loch Spelve: Inverlussa and Site 1 (Common mussels)

2011 = A - April to December

2012 = A - January to March

Loch Spelve: Rhuba na Faing (Common mussels)

2011 = A - April to December

2012 = A - January to March

Category A sites are of the highest standard and means that shellfish can go directly for human consumption however category B requires that shellfish must be depurated, heat-treated or re-laid prior to human consumption.

FSA have not completed a sanitary survey for Loch Spelve

For more information on Food Standards Agency Classification please visit:

<http://www.food.gov.uk/scotland/safetyhygienescot/shellmonitorscot/shellclassesscot/>

14.2 Bathymetric Information

Loch Spelve has a total length of 7.7 km and a freshwater catchment area of 76 km². One sill is located at Grob a Chuthaich, near the entrance to the loch. The basin has a maximum water depth of 58 m. On average, the loch takes three days to flush.

The fresh/tidal flow ratio is 0.3, indicative of a moderate fresh water input for the small size of this loch. There are no morphological pressures on Loch Spelve.

14.3 Conservation Designations

Special Protected Area (SPA) – [Cnuic agus Cladach Mhuile \(Mull Coast and Hills\)](#)

Designated 20/12/2002 for aggregations of internationally important breeding birds (Golden eagle (*Aquila chrysaetos*))

This is also a **Groundwater Dependent SPA**

Special Area of Conservation (SAC) – [Mull Oakwoods](#)

Designated for internationally important species (Otter (*Lutra lutra*)) and habitats (Western acidic oak woodland)

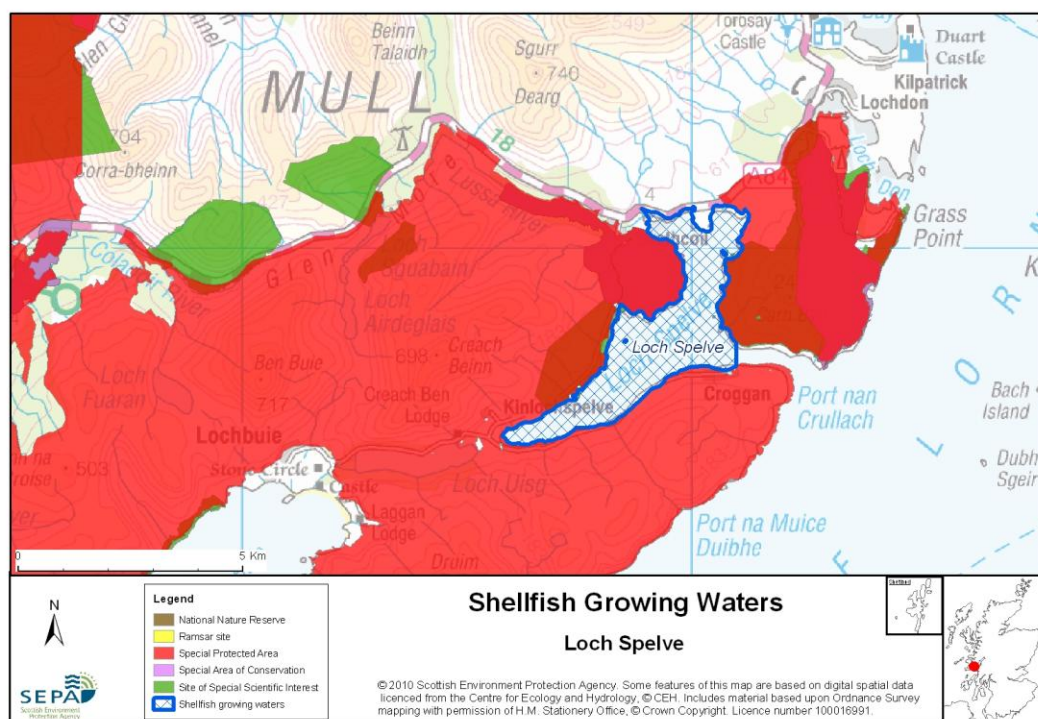
This is also a **Water Dependent SAC** and a **Groundwater Dependent SAC**

Sites of Special Scientific Interest (SSSI) – [Allt Molach](#)

Designated 28/02/1990 for Igneous petrology (Tertiary Igneous)

Sites of Special Scientific Interest (SSSI) – [Loch Squabain](#)
Designated 28/02/1990 for Igneous petrology (Tertiary Igneous)

Sites of Special Scientific Interest (SSSI) – [Ardura - Auchnacraig](#)
Designated 30/09/1986 for Saltmarsh, Igneous petrology (Tertiary Igneous), Upland oak woodland and butterflies - Marsh fritillary (*Euphydryas aurinia*)



14.4 Topography and Land Use – Potential Diffuse Pollution Sources

Loch Spelve is located in the south-eastern corner of Mull. The Lussa River flows into the Loch, which in turn flows to the Firth of Lorn. Large areas of Glen Lussa are covered by both coniferous and broadleaved woodland. The majority of the land cover surrounding Loch Spelve consists of grasses/rushes with some heather. There are only a few houses alongside the minor road adjacent to Loch Spelve.

14.5 Point Source Discharge

Point source discharges are limited to <100 individual ST.

There are two marine cage fish farms (Spelve A & B) within the designated shellfish water of Loch Spelve. These sites have a total consented salmon biomass of 1050 tonnes.

14.6 Compliance Monitoring Regime

The following monitoring regime of the designated area was implemented in July 2005.

Year	Monitoring Regime
2005 -	<ul style="list-style-type: none"> • Quarterly for Sal, DO, pH, temperature, visible oil • Annually for metals and organohalogenes in mussels • Twice yearly for metals in water • Quarterly for faecal coliforms in mussels

14.7 Compliance History

UKS7992314 - Loch Spelve				
	Compliance history for Waters and Biota, excluding faecal coliforms data			Compliance history for faecal coliforms
Year	Overall Result	Imperative	Guideline	Guideline
1999	Pass	Pass	Pass	Fail
2000	Pass	Pass	Pass	Pass
2001	Pass	Pass	Pass	Pass
2002	Pass	Pass	Pass	Pass
2003	Pass	Pass	Pass	Fail
2004	Pass	Pass	Pass	Pass
2005	Pass	Pass	Pass	Fail (Camas and Croggan Pier)
2006	Pass	Pass	Pass	Fail
2007	Pass	Pass	Pass	Pass
2008	Pass	Pass	Pass	Pass
2009	Pass	Pass	Pass	Pass
2010	Pass	Pass	Pass	Pass

The shellfish waters have failed and passed the Guideline standard for faecal coliforms on several occasions over the years since 1999. They complied with the standard from 2007 to 2010.

14.8 Future Monitoring

Biannual sampling is continuing for metals and organochlorines in waters along with annual sampling of mussels for organohalogenes and metals. This loch will also continue to be monitored at all three sites monthly for T, Sal, DO and pH in water until it is clear that the provisions of Article 7(2) of the directive can be applied.

If any sample fails to meet any chemistry parameter EQS, the site will be revisited and re-sampled for the failed parameter. Samplers are asked to identify any evidence of visible harm to the shellfish population at the site. Loch Spelve ECSGW will be monitored quarterly for faecal coliforms in mussels.

WFD Objectives

Under the Water Framework Directive, the target objectives expect this shellfish water to Pass by 2015 (first River Basin Management Plan Cycle) for Imperative Growing Water Standards, with high confidence.

The Guideline Shellfish Growing Water Standards are not predicted to pass until the third River Basin Management Plan in 2027, with low confidence. This is due to past failures of the faecal coliform standards. These will be reviewed after the first cycle ends in 2015.

Objective	First Cycle 2015	Confidence	Second Cycle 2021	Confidence	Third Cycle 2027	Confidence
Imperative Shellfish Growing Waters Standard	Pass by 2015	High	Pass by 2021	High	Pass by 2027	High
Guideline Shellfish Growing Waters Standard	Fail by 2015	Low	Fail by 2021	Low	Pass by 2027	Low

14.9 Improvement Actions

There are currently no improvement actions planned for this area.

14.10 Summary of Actions

Action	Deadline
No improvement actions currently planned.	N/A