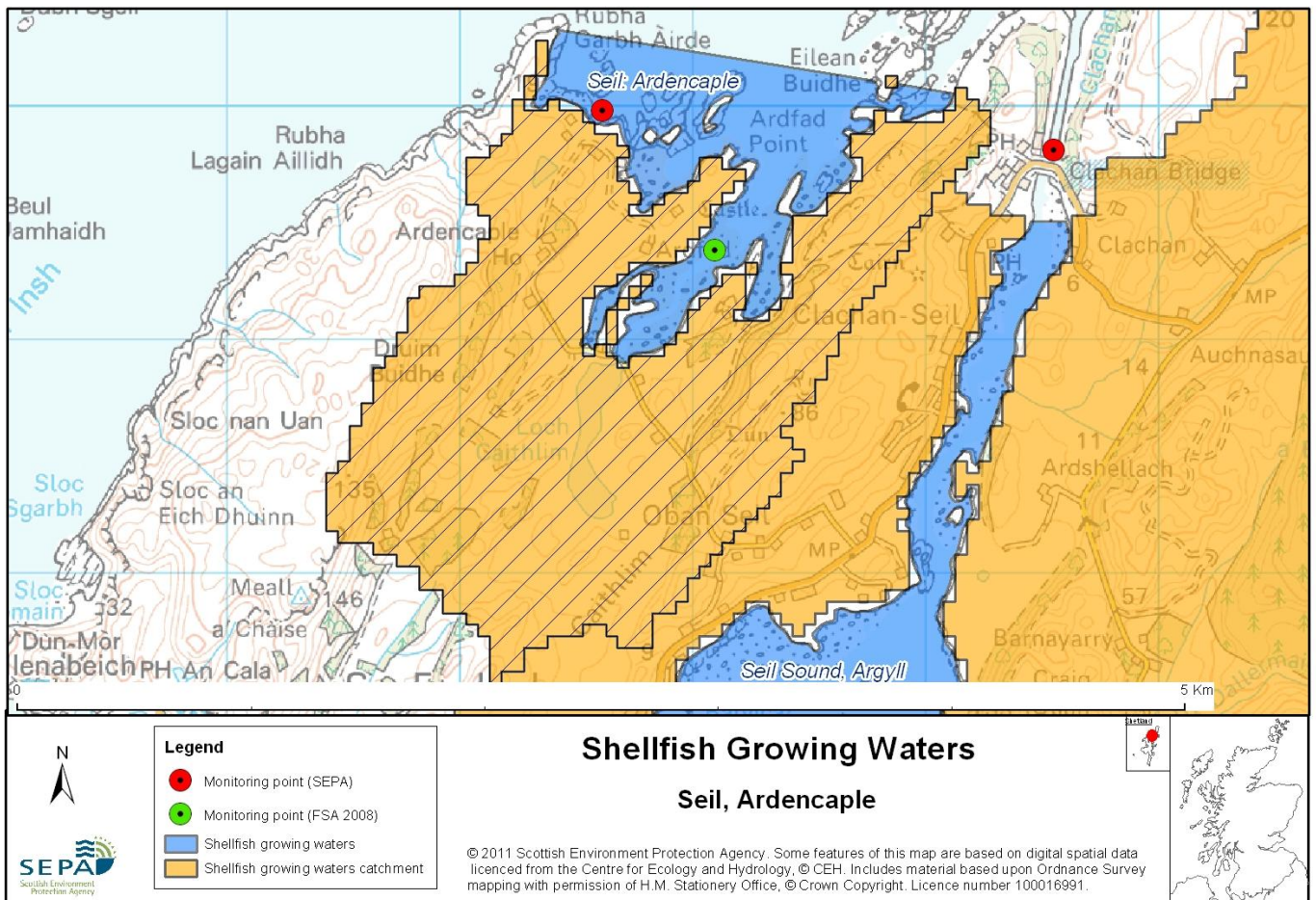


13 Seil: Ardencaple



Name	Seil: Ardencaple
Report Reference Number	13
WFD Code	UKS7992313
Local Information	An area bounded by the line drawn between the points NM7641220322 and NM7811720049 and extending to MHWS.
Designated Area (km ²)	0.90
Year of Designation	1998
Sampling Points	Seil Ardencaple - NM 76611 19975
Commencement of Monitoring	1999

13.1 Commercial Shellfish Interests

Seil, Ardencaple is also designated by the Food Standards Agency (FSA) as a Shellfish Harvesting Area for the production of pacific oysters (), under the name Seil Point.

Seil Point has two sites used for classification (Ardencaple – Cadzow and Ardencaple – Cyster)

Seil Point: All sites (Pacific oysters)
2011 = A - April, November & December
B - May to october
2012 = A - January to March

Category A sites are of the highest standard and means that shellfish can go directly for human consumption however category B requires that shellfish must be depurated, heat-treated or re-laid prior to human consumption.

FSA have completed a sanitary survey Seil Point

For more information on Food Standards Agency Classification please visit:
<http://www.food.gov.uk/scotland/safetyhygienescot/shellmonitorscot/shellclassesscot/>

13.2 Bathymetric Information

Ardencaple is situated on the north coast of Seil and lies in the Firth of Lorne. Ardencaple Bay is north facing but sheltered from the west. It has a maximum water depth of approximately 4 m. The total length of the bay is approximately 1.7 km.

There are no morphological pressures within the area.

13.3 Conservation Designations

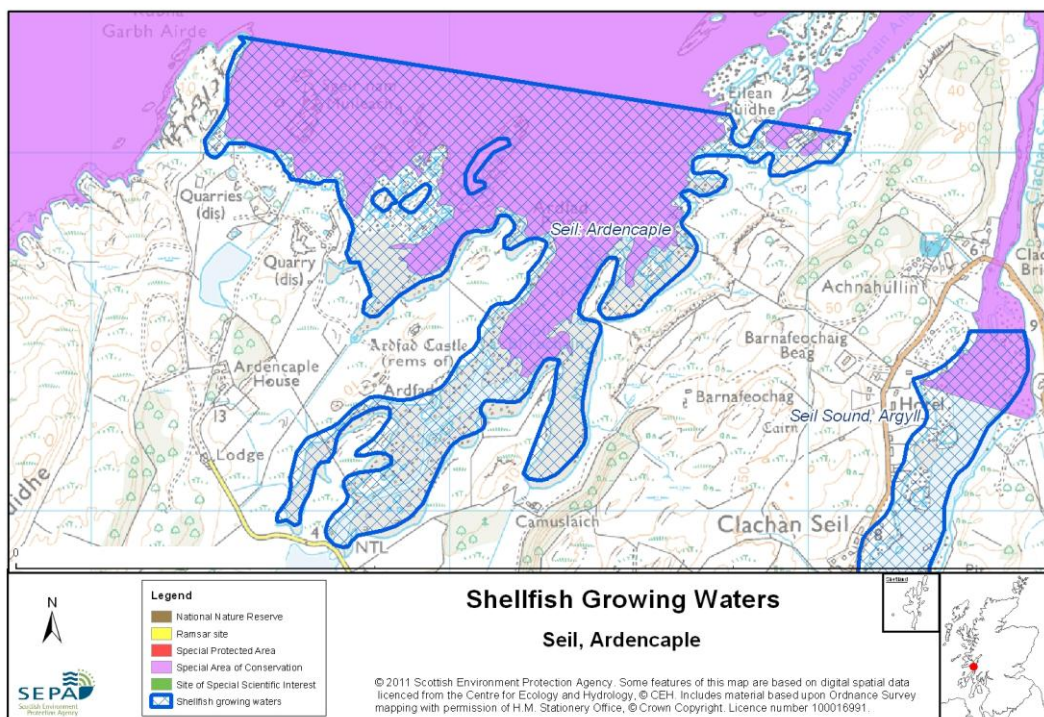
Seil: Ardencaple is also designated as a Shellfish Harvesting Area by the Food Standards Agency (FSA).

South of Ardencaple is the Seil Sound, Argyll ([UKS7992331](#)) designated Shellfish Water, part of which is also designated as a FSA Shellfish Harvesting Area.

Special Area of Conservation (SAC) – [Firth of Lorn](#)

Designated for 17/03/2005 for internationally important Marine Inshore sublittoral rock (Reefs)

This is also designated a **Water Dependent SAC**



13.4 Topography and Land Use – Potential Diffuse Pollution Sources

This small area lies off the north coast of Seil Isle. There is only limited livestock agriculture in the area and the population density is very low with only a couple of houses in the area. There are no major freshwater inputs to this shellfish water.

The most likely reason for past failure of this designation is diffuse source pollution from either sewage disposal and/or livestock farming. Bacterial source tracking may be required to ascertain the origin of diffuse source pollution if failures continue.

13.5 Point Source Discharge

Point source discharges are limited to <50 individual ST. Consents may be reviewed and where necessary will require appropriate treatment by 2006.

There are no marine cage fish farms within the designated shellfish water.

13.6 Compliance Monitoring Regime

Initial sampling was carried out at Ardencaple on private land, but due to difficulties of access the sampling site was moved to Seil Sound (Clachan Bridge), to allow easier access for sampling.

The following monitoring regime was implemented in July 2005.

Year	Monitoring Regime
2005 -	<ul style="list-style-type: none"> • Quarterly for Sal, DO, pH, temperature, visible oil • Twice yearly for metals in water

13.7 Compliance History

UKS7992313 - Seil: Ardencaple				
	Compliance history for Waters and Biota, excluding faecal coliforms data			Compliance history for faecal coliforms
Year	Overall Result	Imperative	Guideline	Guideline
1999	Not Sampled	Not Sampled	Not Sampled	Fail (Commercial shellfish)
2000	Not Sampled	Not Sampled	Not Sampled	Fail (Commercial shellfish)
2001	Not Sampled	Not Sampled	Not Sampled	Fail (Commercial shellfish)
2002	Pass	Pass	Pass	Fail (Commercial shellfish)
2003	Pass	Pass	Pass	No mussels
2004	Pass	Pass	Pass	No mussels
2005	Pass	Pass	Fail ¹	No mussels
2006	Pass	Pass	Pass	No mussels
2007	Pass	Pass	Pass	Fail
2008	Pass	Pass	Pass	Fail
2009	Pass	Pass	Pass	Pass
2010	Pass	Pass	Pass	Fail

¹Failure relates to a single result for salinity in 2005 of 1.11‰. This breaches the Guideline standard of 12-38 ‰. There are no anthropogenic inputs to the area that could account for a drop in salinity to such levels. The result is almost certainly due to a combination of low tide and high run off from rainwater affecting the sampling site at the time of sampling, and is not representative of the salinity of the designated area as a whole. This being a natural phenomenon, no measures will be taken, in accordance with Article 7(3) of the Directive.

Guideline faecal coliforms standards failed 1999-2002. There were no mussels available from 2003-2006. The standards then failed again in 2007, 2008 and 2010 but passed in 2009.

13.8 Future Monitoring

Biannual sampling is continuing for metals and organochlorines in water along with monthly sampling for T, Sal, DO and pH in water. Mussels are not available for collection at this site.

If any sample fails to comply with any chemical EQS, the site will be revisited and resampled for the failed parameter.

13.9 Improvement Actions

There are currently no improvement actions planned for this area.

WFD Objectives

Under the Water Framework Directive, the target objectives expect this shellfish water to Pass by 2015 (first River Basin Management Plan Cycle) for Imperative Shellfish Growing Water Standards, with high confidence. The Guideline Shellfish Growing Water Standards are also predicted to pass by 2015 but with low confidence.

Objective	First Cycle 2015	Confidence	Second Cycle 2021	Confidence	Third Cycle 2027	Confidence
Imperative Shellfish Growing Waters Standard	Pass by 2015	High	Pass by 2021	High	Pass by 2027	High
Guideline Shellfish Growing Waters Standard	Pass by 2015	Low	Pass by 2021	Low	Pass by 2027	Low

13.10 Summary of Actions

Action	Deadline
No improvement actions currently planned.	N/A