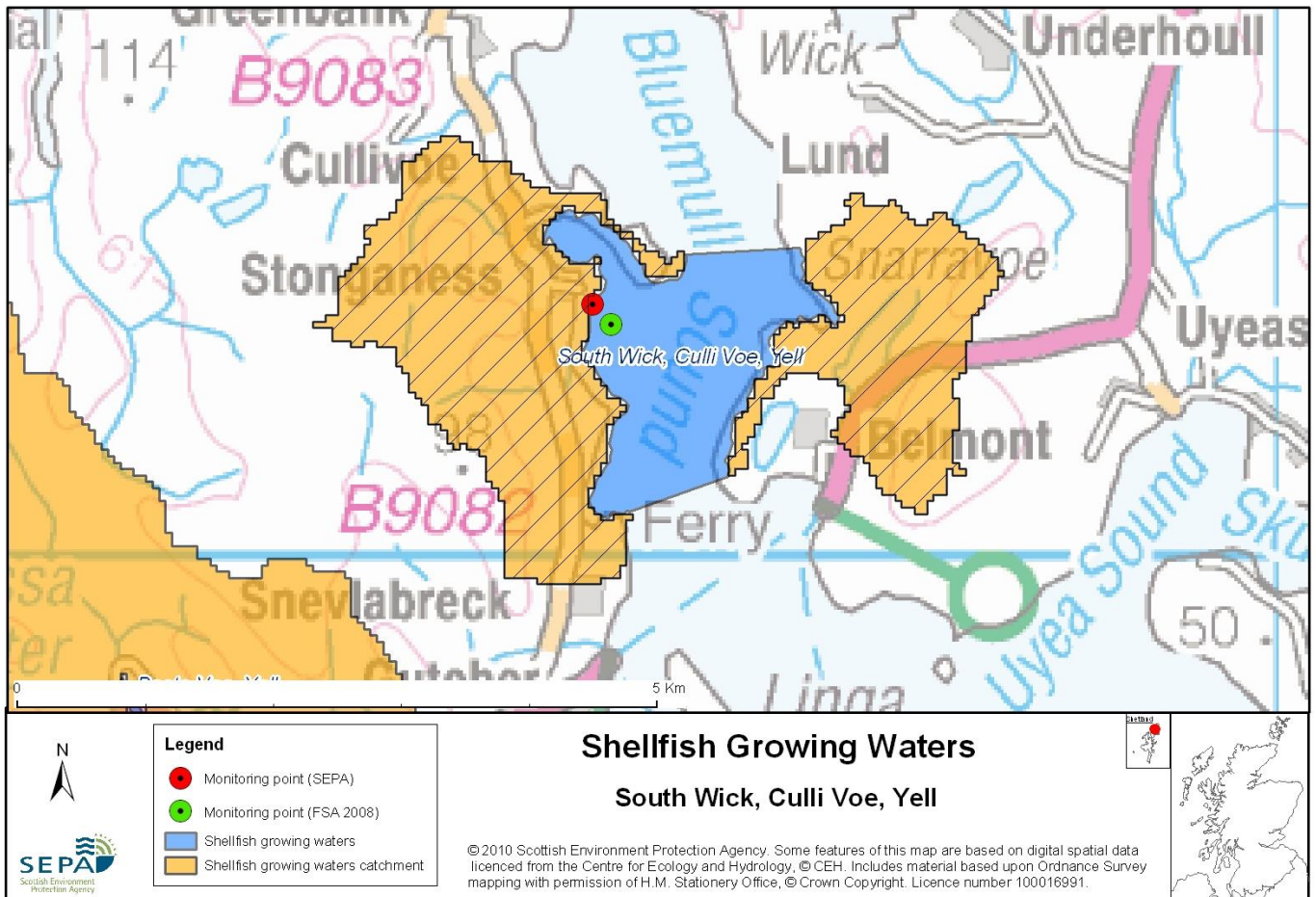


## 121 South Wick, Culli Voe, Yell



Name	South Wick, Culli Voe, Yell
Report Reference Number	121
WFD Code	UKS79923121
Local Information	An area between lines drawn between HP5540002400 to HP5630002400 and HP5500000400 to HP5570000600, extending to the MHS.
Designated Area (km <sup>2</sup> )	2.57
Year of Designation	2008
Sampling Points	South Wick South of White House, Cullivoe, Yell - HP 54668 01958
Commencement of Monitoring	2008

### 121.1 Commercial Shellfish Interests

The designated Shellfish Water was also a designated Shellfish Harvesting Area by the Food Standards Agency (FSA) for the production on common mussels (*Mytilus edulis*), but was declassified in 2011.

FSA have not carried out a sanitary survey for South Wick, Culli Voe, Yell.

For more information on Food Standards Agency Classification please visit:

<http://www.food.gov.uk/scotland/safetyhygienescot/shellmonitorscot/shellclassesscot/>

### 121.2 Bathymetric Information

This designated Shellfish Water is situated in part of Bluemull Sound and Culli Voe between the island of Yell and Unst.

Culli Voe is a relative small section of this Shellfish Water, it is a bay at Stronganess approximately 5km by 4km and 2m deep.

Bluemull Sound is approximately 5km in length from Papil Ness to the Head of Gutcher with a maximum width of less than 2km. The Part of Bluemull Sound within the Shellfish Water is less than 2km in length and reaches a maximum depth of 38m.

### 121.3 Conservation Designations

This designated Shellfish Water is also a Shellfish Harvesting Area, designated by the Food Standards Agency (FSA). This Shellfish Water is situated close to Basta Voe Shellfish Water ([UKS79923110](#)) and FSA Shellfish Harvesting Area. There are also FSA Shellfish Harvesting Areas at Skuda Sound and Wina Ness.

#### **Special Protection Area (SPA) – [Hermaness, Saxa Vord and Valla Field](#)**

Designated 25/09/2009 for breeding bird species (Fulmar (*Fulmarus glacialis*), Gannet (*Morus bassanus*), Great skua (*Stercorarius skua*), Guillemot (*Uria aalge*), Puffin (*Fratercula arctica*), Red-throated diver (*Gavia stellata*), Shag (*Phalacrocorax aristotelis*))

#### **Special Protection Area (SPA) – [Fetlar](#)**

Designated 25/09/2009 for breeding bird species (Arctic skua (*Stercorarius parasiticus*), Arctic tern (*Sterna paradisaea*), Dunlin (*Calidris alpina schinzii*), Fulmar (*Fulmarus glacialis*), Great skua (*Stercorarius skua*), Red-necked phalarope (*Phalaropus lobatus*), Whimbrel (*Numenius phaeopus*),

This is also a **Water Dependent SPA**

#### **Sites of Special Scientific Interest (SSSI) – [Gutcher](#)**

Designated 13/02/1989 for Structural and metamorphic geology (Moine)

#### **Sites of Special Scientific Interest (SSSI) – [Ness of Cullivoe](#)**

Designated 25/01/1988 for Structural and metamorphic geology (Moine)

#### **Sites of Special Scientific Interest (SSSI) – [Lunda Wick](#)**

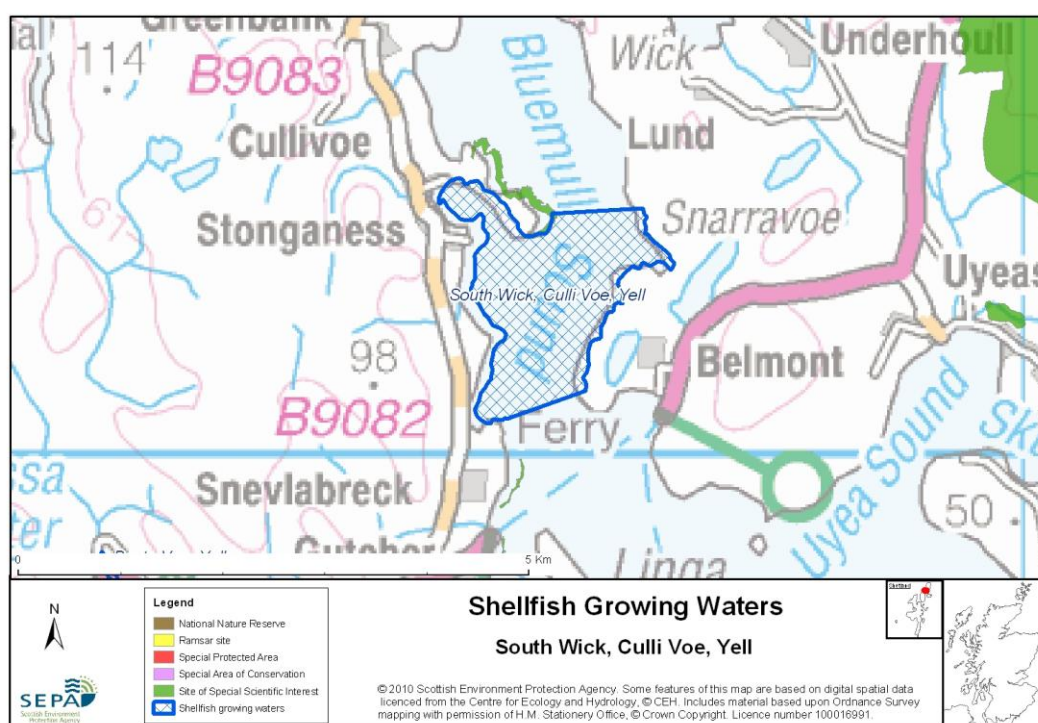
Designated 16/01/1987 for Mineralogy of Scotland

### Sites of Special Scientific Interest (SSSI) – [Valla Field](#)

Designated 05/12/2000 for breeding bird species (Great skua (*Stercorarius skua*), Red-throated diver (*Gavia stellata*))

### Sites of Special Scientific Interest (SSSI) – [Breckon](#)

Designated 11/10/1983 for Vascular plants - Bog orchid (*Hammarbya paludosa*), Eutrophic loch, Supralittoral coastal sediment (Marchair, sand dune), Supralittoral coastal rock (maritime cliff)



## 121.4 Topography and Land Use – Potential Diffuse Pollution Sources

The land use on the west coast of the shellfish water is a mixture of mainly heather moorland and blanket bog. The east coast of the designated area is semi-natural grasslands and improved pasture.

There are no baseline river waterbodies (rivers with >10km<sup>2</sup> catchment) flowing into the shellfish waters, or the surrounding waters. Baseline waterbodies are classified by SEPA under the Water Framework Directive (WFD). For more information please visit: [http://www.sepa.org.uk/water/monitoring\\_and\\_classification.aspx](http://www.sepa.org.uk/water/monitoring_and_classification.aspx)

SEPA does not have diffuse source pollution pressures recorded as causing downgrades recorded for this shellfish water.

## 121.5 Point Source Discharge

SEPA does not have point source pollution pressures recorded as causing downgrades recorded for this shellfish water. There is only 1 registered septic tank that discharges to the coastal waterbody.

There is one marine fish farm within the designated shellfish waters with 814.6 tonnes.

Category	Name	Consent No.	NGR	Biomass (t)	Additional Information
Fish Farm	Wick of Garth, North of Gutcher, Yell	CAR/L/1008947-VN1	HP 5487 0059	814.6	-

### 121.6 Compliance Monitoring Regime

Site	Current Monitoring	Comments
South Wick, South White House, Cullivoe	<ul style="list-style-type: none"> <li>Quarterly for E.coli in mussels</li> </ul>	<ul style="list-style-type: none"> <li>Sampled by the FSA</li> </ul>

### 121.7 Compliance History

UKS79923121 - South Wick, Culli Voe, Yell				
Compliance history for Waters and Biota, excluding faecal coliforms data				Compliance history for faecal coliforms
Year	Overall Result	Imperative	Guideline	Guideline
2008	Pass	No Data	No Data	Pass
2009	Pass	Pass	Pass	Pass
2010	Pass	Pass	Pass	Pass

This shellfish waters has passed guideline standards for faecal coliforms since monitoring began in 2008.

### 121.8 Future Monitoring

The monitoring regime (121.6 Compliance Monitoring Regime) will be followed. In the event of any chemistry parameter failing to meet any EQS, the site will be revisited and resampled for the failed parameter.

Samplers are asked to identify any evidence of visible harm to the shellfish population at the site.

### 121.9 Improvement Actions

There are currently no improvement actions planned for this designated Shellfish Water, however this Shellfish Water was only recently designated (2008), therefore improvement actions may be required in the future if the standards are breached.

### WFD Objectives

Under the Water Framework Directive, the target objectives expect this shellfish water to Pass by 2015 (first River Basin Management Plan Cycle) for Imperative and Guideline Shellfish Growing Water Standards, with high confidence.

Objective	First Cycle 2015	Confidence	Second Cycle 2021	Confidence	Third Cycle 2027	Confidence
Imperative Shellfish Growing Waters Standard	Pass by 2015	High	Pass by 2021	High	Pass by 2027	High
Guideline Shellfish Growing Waters Standard	Pass by 2015	High	Pass by 2021	High	Pass by 2027	High

### 121.10 Summary of Actions

Action	Deadline
No improvement actions currently planned.	N/A