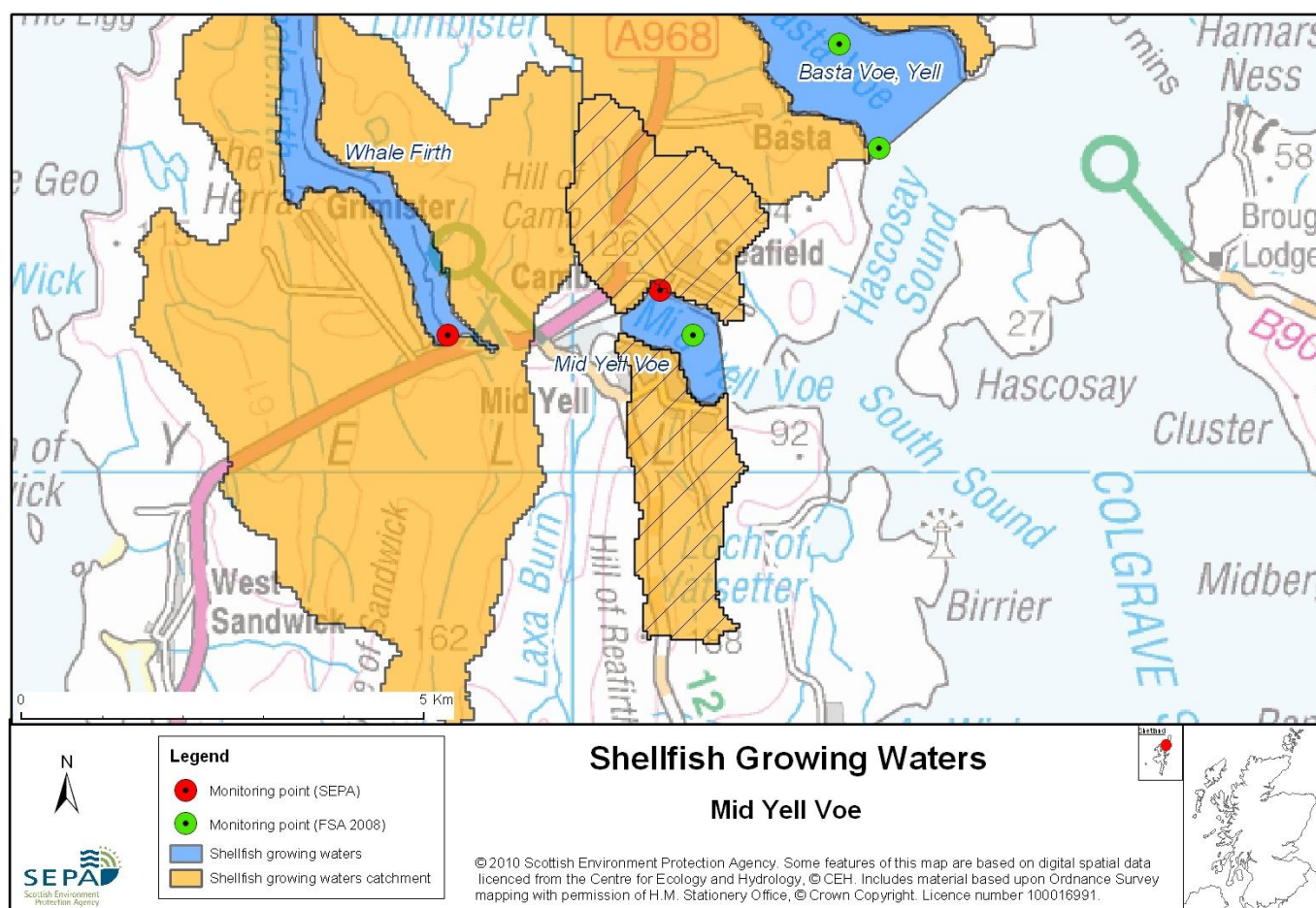


## 118 Mid Yell Voe



<b>Name</b>	<b>Mid Yell Voe</b>
<b>Report Reference Number</b>	118
<b>WFD Code</b>	UKS79923118
<b>Local Information</b>	Area bounded by lines drawn between HU5060091932 to HU5059891749 and HU5178791947 to HU5190190987, extending to MHWS.
<b>Designated Area (km<sup>2</sup>)</b>	0.95
<b>Year of Designation</b>	2005
<b>Sampling Points</b>	Mid Yell Voe at Seafield Pier (Biota) - HU 51093 92254
<b>Commencement of Monitoring</b>	2005

### 118.1 Commercial Shellfish Interests

Mid Yell Voe Shellfish Water is also a designated Shellfish Harvesting Area from the Food Standards Agency (FSA) for the production of common mussels (*Mytilus edulis*). FSA classify at two sites (Camb and Seafield) both of which are classified as below.

Mid Yell Voe: Both sites (Common Mussels)  
2011 = B - April to October  
A - November & December  
2012 = A - January to March

Category A sites are of the highest standard and means that shellfish can go directly for human consumption however category B requires that shellfish must be depurated, heat-treated or re-laid prior to human consumption.

FSA have completed a sanitary survey for Mid Yell Voe.

For more information on Food Standards Agency Classification please visit:  
<http://www.food.gov.uk/scotland/safety/hygienscot/shellmonitorscot/shellclassesscot/>

### 118.2 Bathymetric Information

Mid Yell Voe is situated on east Yell, north of mainland Shetland. It has a total length of 3.3kms and a catchment area of approximately 21km<sup>2</sup>. The shellfish growing area is approximately 1.5kms in length. There are no basins in the loch and maximum water depth is 20m with a flushing time of 2 days. Fresh/tidal flow ratio indicates a salinity reduction of 10, indicating a moderate/high freshwater input to the loch.

There are no morphological pressures within the waters.

### 118.3 Conservation Designations

This Shellfish Water is also a designated Shellfish Harvesting Area from the Food Standards Agency (FSA). To the north of this site is Basta Voe which is designated as a Shellfish Water ([UKS79923110](#)) and FSA Shellfish Harvesting Area. Whale Firth Shellfish Water ([UKS79923107](#)) is situated west of this site, on the west coast of Yell.

#### **Special Protection Area (SPA) – [Fetlar](#)**

Designated 25/09/2009 for breeding bird species (Arctic skua (*Stercorarius parasiticus*), Arctic tern (*Sterna paradisaea*), Dunlin (*Calidris alpina schinzii*), Fulmar (*Fulmarus glacialis*), Great skua (*Stercorarius skua*), Red-necked phalarope (*Phalaropus lobatus*), Whimbrel (*Numenius phaeopus*),

This is also a **Water Dependent SPA**

#### **Special Protection Area (SPA) – [Otterswick and Graveland](#)**

Designated 31/12/2001 for internationally important bird species (Red-throated diver (*Gavia stellata*))

This is also a **Water Dependent SPA** and **Groundwater Dependent SPA**

**Special Area of Conversation (SAC) – [Hascosay](#)**

Designated 17/03/2005 for Internationally important species (otter – *Lutra lutra*) and habitat (blanket bogs)

This is also a **Water Dependent SAC** and **Groundwater Dependent SAC**

**Special Area of Conversation (SAC) – [East Mires and Lumbister](#)**

Designated 17/03/2005 for habitats – upland blanket bog

This is also a **Water Dependent SAC**

**Sites of Special Scientific interest (SSSI) – [Hascosay](#)**

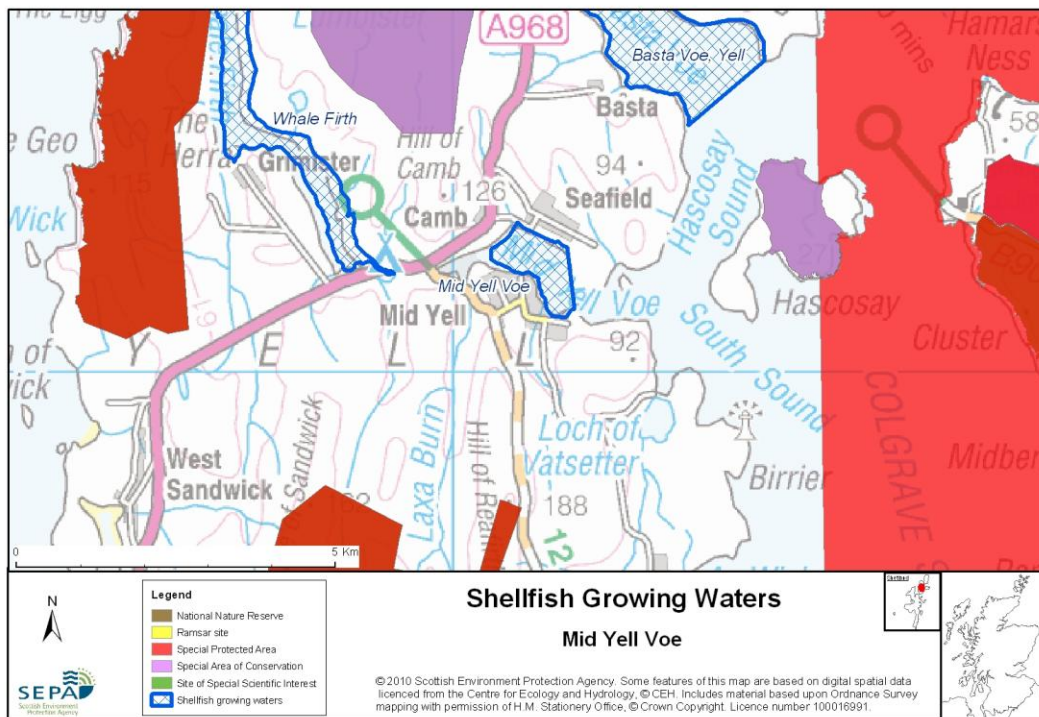
Designated 25/01/1988 for habitat (blanket bog), breeding bird species (Dunlin (*Calidris alpina schinzii*)) and Structural and metamorphic geology (Moine)

**Sites of Special Scientific interest (SSSI) – [East Mires and Lumbister](#)**

Designated 08/01/1996 for habitat (blanket bog), breeding bird species assemblage

**Sites of Special Scientific interest (SSSI) – [Otterswick](#)**

Designated 05/12/2000 for aggregations of breeding birds (Red-throated diver (*Gavia stellata*))



**118.4 Topography and Land Use – Potential Diffuse Pollution Sources**

The designated waters lie within an inlet on Yell. The land around the inlet is lightly populated with the settlement of Mid Yell being the largest. The surrounding area is mostly rolling hills and rough grazing land. There are several small burns draining into the designated waters. The waters are also used for transport and may be at risk from diffuse pollution.

SEPA has recorded that diffuse source pollution from livestock farming is likely to have contributed to past failures of the Shellfish standards, however point source pollution seems to be a more significant impact.

### 118.5 Point Source Discharge

Type	Name	Treatment	Consent No.	NGR	PE	Additional Information
Scottish Water Asset	North-a-Voe STW	Primary	CAR/L/1002284	HU5128592163	20	-
	Reafirth STW	Primary	CAR/L/1002250	HU5151390942	250	-
	Ravensgeoe STW	Primary	CAR/L/1002253	HU5111491557	100	-
	Linkshouse STW	Primary	CAR/L/1002252	HU5096891572	200	-
	North-a-Voe	Primary	CAR/L/1002251	HU5111992244	100	-
Category	Name	Consent No.	NGR	Biomass (t)	Additional Information	
Fish farm	Mid Yell Voe	CAR/L/1004200	HU 51709180	460	-	
	Bunya Sound	CAR/L/1004205	HU52309090	750	Out with Shellfish Water	

There are several Scottish Water septic tank discharges into the designated waters from settlements around the inlet but there are no consented discharges from public sewage works to the designated water. The waters receive final effluent from a fish processing factory, CAR authorisation CAR/L/1004027. There is 1 marine cage fish farms within the designated waters and one just outside the designated area at Bunya Sound

### 118.6 Compliance Monitoring Regime

Site	Current Monitoring	Comments
Mid Yell Voe	<ul style="list-style-type: none"> <li>Quarterly for faecal coliforms in mussels</li> <li>Once every three years for metals and organohalogenes in mussels</li> </ul>	<ul style="list-style-type: none"> <li>Sampled by the FSA</li> </ul>

## 118.7 Compliance History

UKS79923118 - Mid Yell Voe				
	Compliance history for Waters and Biota, excluding faecal coliforms data			Compliance history for faecal coliforms
Year	Overall Result	Imperative	Guideline	Guideline
2006	Pass	Pass	Fail <sup>1</sup>	Fail
2007	Pass	Pass	Fail <sup>2</sup>	Pass
2008	Pass	Pass	Pass	Fail
2009	Pass	Pass	Pass	Pass
2010	Pass	Pass	Pass	Fail

<sup>1</sup>Failure relates to a single exceedance of the guideline standard for dissolved oxygen of 74.9% taken at this site in December 2006.

<sup>2</sup>Failure relates to a single exceedance of the guideline standard for dissolved oxygen of 77.3% taken at this site in November 2007.

The waters failed to comply with the Guideline standard for faecal coliforms in 2006, 2008 and 2010 but passed in 2007 and 2009.

## 118.8 Future Monitoring

The monitoring regime (118.6 Compliance Monitoring Regime) will be followed. In the event of any chemistry parameter failing to meet any EQS, the site will be revisited and resampled for the failed parameter.

Samplers are asked to identify any evidence of visible harm to the shellfish population at the site.

## 118.9 Improvement Actions

There are currently no improvement actions planned for this area.

## WFD Objectives

Under the Water Framework Directive, the target objectives expect this shellfish water to Pass by 2015 (first River Basin Management Plan Cycle) for Imperative Shellfish Growing Water Standards with high confidence. However the Guideline Shellfish Growing Water Standards is predicted to pass with only low confidence.

Objective	First Cycle 2015	Confidence	Second Cycle 2021	Confidence	Third Cycle 2027	Confidence
Imperative Shellfish Growing Waters Standard	Pass by 2015	High	Pass by 2021	High	Pass by 2027	High
Guideline Shellfish Growing Waters Standard	Pass by 2015	Low	Pass by 2021	Low	Pass by 2027	Low

### 118.10 Summary of Actions

Action	Deadline
SEPA will investigate any environmental complaint that may have an impact on water quality and will ensure appropriate corrective or remedial action is implemented	N/A