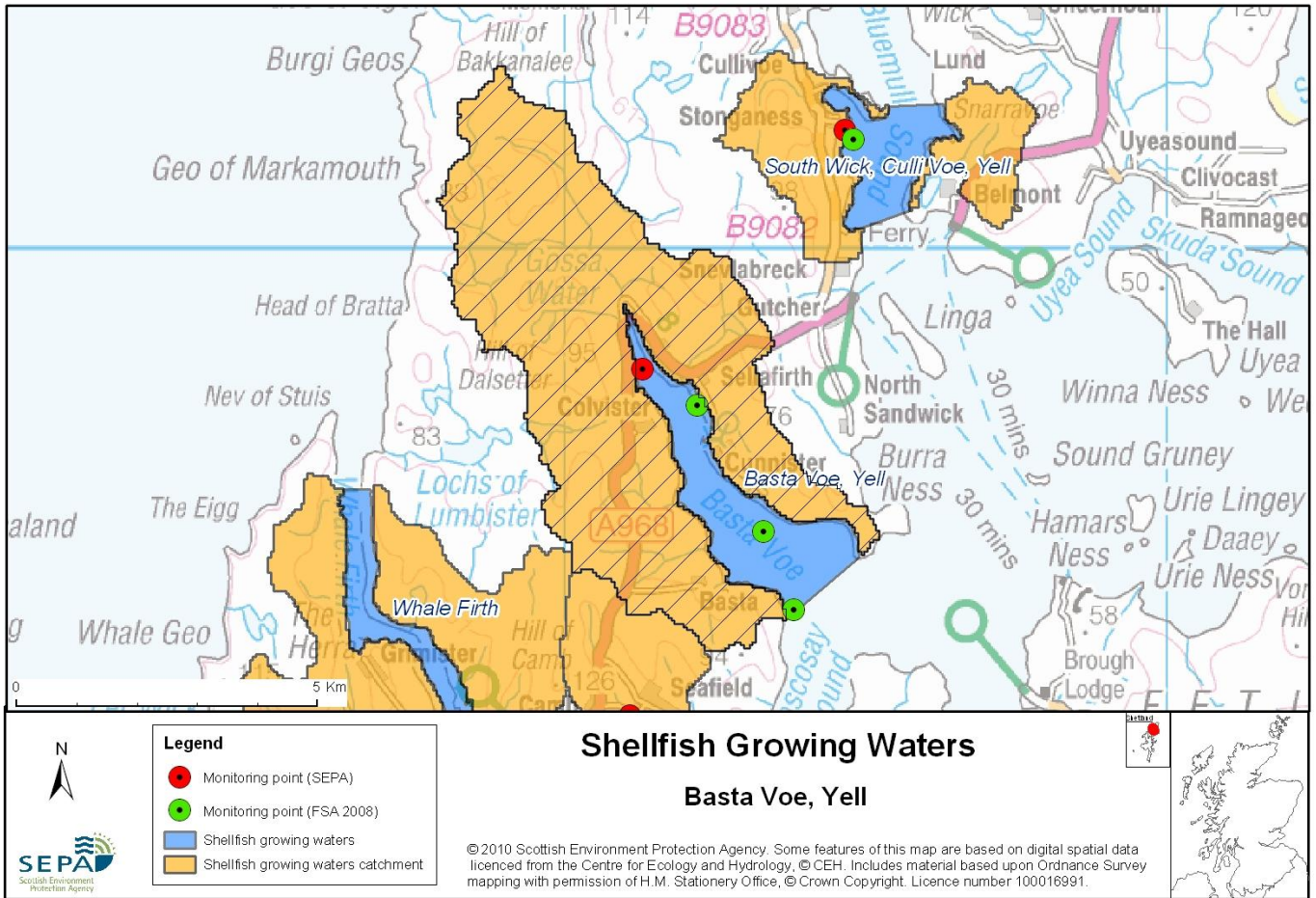


110 Basta Voe, Yell



Name	Basta Voe, Yell
Report Reference Number	110
WFD Code	UKS79923110
Local Information	Area west of line drawn between HU5488794881 and HU5368493861 (Basta Ness) and extending to MHWS.
Designated Area (km²)	4.81
Year of Designation	2002
Sampling Points	Basta Voe Mussel Site - HU 51300 98000
Commencement of Monitoring	2003

110.1 Commercial Shellfish Interests

Within Basta Voe Shellfish Water there are two designated Shellfish Harvesting Areas (Basta Voe Outer and Basta Voe Cove) by the Food Standards Agency (FSA) for the production of common mussels (*Mytilus edulis*). There are four sites within the harvesting area (Basta Voe Cove – Nisbet, Basta Voe Outer – Basta Ness, Basta Voe outer – Thomason, Basta Voe Outer – outer).

Basta Voe: All sites (Common mussels)
2011 = A - April to December
2012 = A - January to March

All sites are Category A sites, which are of the highest standard and means that shellfish can go directly for human consumption.

FSA have not yet conducted a sanitary survey for Basta Voe.

For more information on Food Standards Agency Classification please visit:
<http://www.food.gov.uk/scotland/safety/hygienscot/shellmonitorscot/shellclassesscot/>

110.2 Bathymetric Information

Basta Voe is a partially enclosed body of water located on Yell in the Shetland Islands. It is exposed to south and south-easterly winds and has a maximum length of 5.2km. The maximum depth of the voe is 23m and it has no sills. The catchment area of Basta Voe is 32km² and the voe has a flushing time of 5 days, with a salinity reduction of 0.2ppt, suggesting a relatively low freshwater input. There are no morphological pressures on the site.

110.3 Conservation Designations

This Shellfish Water is also designated as a Shellfish Harvesting Area by the Food Standards Agency (FSA). The FSA designation is larger than the Shellfish Water.

This Shellfish Water is situated close to South Wick, Culli Voe, Yell Shellfish Water ([UKS79923121](#)) and FSA Shellfish Harvesting Area. There are also FSA Shellfish Harvesting Areas at Skuda Sound and Wina Ness.

There are also a designated Shellfish Water ([UKS79923119](#)) and FSA Shellfish Harvesting Area at Mid Yell Voe

Special Protection Area (SPA) – [Fetlar](#)

Designated 25/09/2009 for breeding bird species (Arctic skua (*Stercorarius parasiticus*), Arctic tern (*Sterna paradisaea*), Dunlin (*Calidris alpina schinzii*), Fulmar (*Fulmarus glacialis*), Great skua (*Stercorarius skua*), Red-necked phalarope (*Phalaropus lobatus*), Whimbrel (*Numenius phaeopus*),

This is also a **Water Dependent SPA**

Special Area of Conversation (SAC) – [Hascosay](#)

Designated 17/03/2005 for Internationally important species (otter – *Lutra lutra*) and habitat (blanket bogs)

This is also a **Water Dependent SAC** and **Groundwater Dependent SAC**

Special Area of Conversation (SAC) – [East Mires and Lumbister](#)

Designated 17/03/2005 for habitats – upland blanket bog

This is also a **Water Dependent SAC**

Sites of Special Scientific interest (SSSI) – [Hascosay](#)

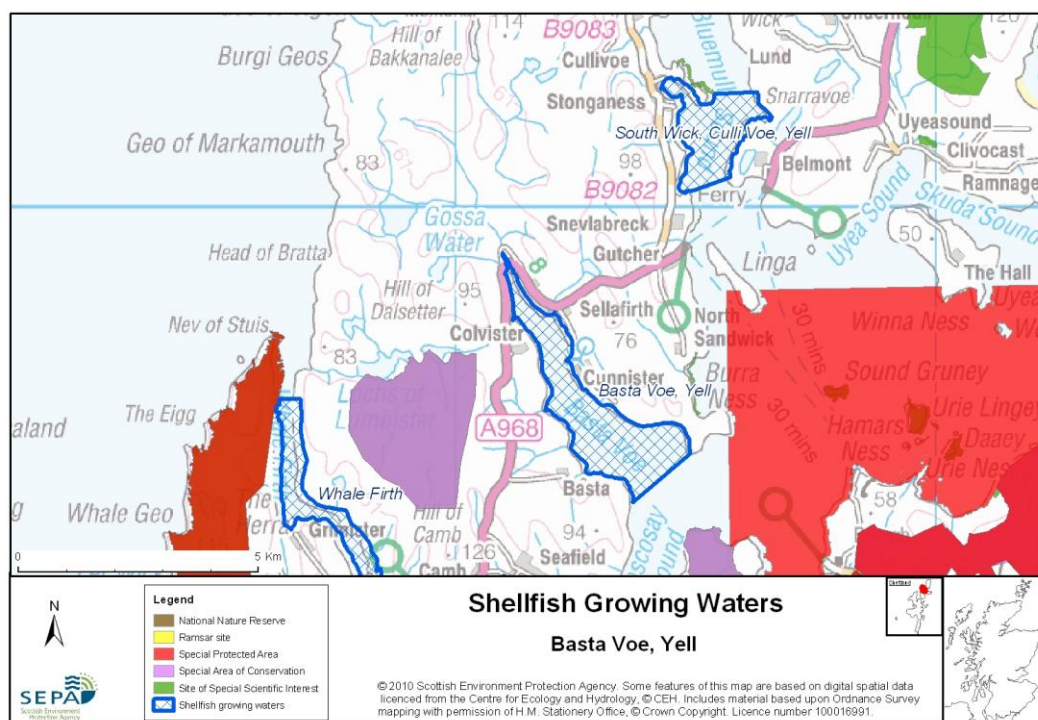
Designated 25/01/1988 for habitat (blanket bog), breeding bird species (Dunlin (*Calidris alpina schinzii*)) and Structural and metamorphic geology (Moine)

Sites of Special Scientific interest (SSSI) – [North Sandwick](#)

Designated 25/01/1988 for Structural and metamorphic geology (Moine)

Sites of Special Scientific interest (SSSI) – [East Mires and Lumbister](#)

Designated 08/01/1996 for habitat (blanket bog), breeding bird species assemblage



110.4 Topography and Land Use – Potential Diffuse Pollution Sources

The land on the east side of the designated water is of improved pasture, and provides a potential source of diffuse pollution. The land to the west is of blanket bog with some semi-natural grassland around the farms of Dalsetter.

There are two freshwater inputs to the designated area; the Burn of Gossawater and the South Burn of Dalsetter. Both are considered to be of at least good quality, although neither is monitored by SEPA.

110.5 Point Source Discharge

There are no consented discharges to the designated area from public sewage systems or industrial operations. Point source discharges are limited to a small number of private septic tanks.

There are three fish farms within the designated shellfish water with a combined biomass of 2550 tonnes. There are also a number of fish farms out with the shellfish designation.

Category	Name	Consent No.	NGR	Biomass (t)	Additional Information
Fish Farm	Basta Voe South	CAR/L/1003877	HU53059470	950	Within Shellfish Water
	Basta Voe, North West Site (Kirkabister)	CAR/L/1004208	HU54489503	1000	
	Basta Voe North	CAR/L/1004196	HU52329585	600	

110.6 Compliance Monitoring Regime

Site	Current Monitoring	Comments
Basta Voe	<ul style="list-style-type: none"> Quarterly for faecal coliforms in mussels Once every three years for metals and organohalogenes in mussels 	<ul style="list-style-type: none"> Sampled by the FSA

110.7 Compliance History

UKS79923110 - Basta Voe, Yell				
	Compliance history for Waters and Biota, excluding faecal coliforms data			Compliance history for faecal coliforms
Year	Overall Result	Imperative	Guideline	Guideline
2003	Pass	Pass	Pass	Fail
2004	Pass	Pass	Pass	Pass
2005	Fail	Fail ^{1,2}	Fail ³	Pass
2006	Pass	Pass	Pass	Fail
2007	Pass	Pass	Pass	Pass
2008	Pass	Pass	Pass	Pass
2009	Pass	Pass	Pass	Pass
2010	Pass	Pass	Pass	Pass

The waters passed the Guideline standard for faecal coliforms in 2004 and 2005 but failed in 2003 and 2006. This site passed from 2007 to 2010.

^{1,2} Failures relate to a single result of 17.2 µg/l of zinc in March 2005 which resulted in a breach of the Imperative standard of 10.0 µg/l and a single result of 37.3 mg/kg shellfish flesh of HCH-G in February 2005 which breached the Imperative standard of 30 mg/kg shellfish flesh.

³ Failure relates to a single result of salinity of 7.33‰ in February 2005 which fails the Guideline standard for salinity of 12-38 ‰.

110.8 Future Monitoring

The monitoring regime (110.6 Compliance Monitoring Regime) will be followed. In the event of any chemistry parameter failing to meet any EQS, the site will be revisited and resampled for the failed parameter.

Samplers are asked to identify any evidence of visible harm to the shellfish population at the site.

Faecal coliform data is collected by SEPA from many of the shellfish waters to comply with Guideline Standards (≤ 300/100ml of shellfish flesh and intervalvular fluid). However many shellfish sites are also by FSA, which can often be more frequent. When this occurs FSA data (≤ 230 *E.coli*/100g flesh) can be used to infer pass/fail of Guideline Standards for faecal coliforms.

110.9 Improvement Actions

There are no improvement actions planned for this designated Shellfish Water.

WFD Objectives

Under the Water Framework Directive, the target objectives expect this shellfish water to Pass by 2015 (first River Basin Management Plan Cycle) for Imperative and Guideline Shellfish Growing Water Standards, with high confidence.

Objective	First Cycle 2015	Confidence	Second Cycle 2021	Confidence	Third Cycle 2027	Confidence
Imperative Shellfish Growing Waters Standard	Pass by 2015	High	Pass by 2021	High	Pass by 2027	High
Guideline Shellfish Growing Waters Standard	Pass by 2015	High	Pass by 2021	High	Pass by 2027	High

110.10 Summary of Actions

Action	Deadline
No improvement actions currently planned.	N/A