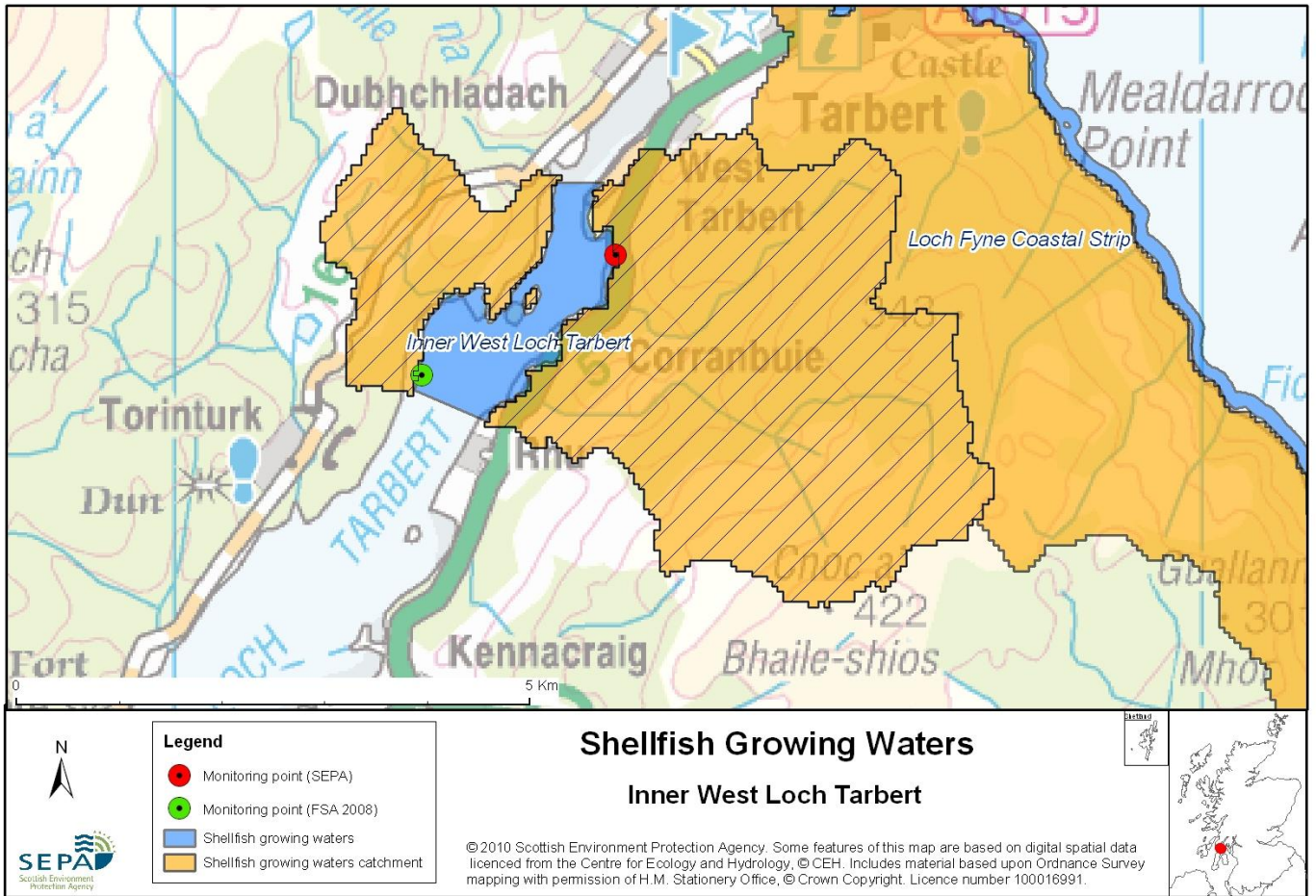


104 Inner West Loch Tarbert



Name	Inner West Loch Tarbert
Report Reference Number	104
WFD Code	UKS79923104
Local Information	An area bounded by lines drawn between NR8234064983 and NR8303864684 and between NR8372767000 and NR8418467000 and extending to MHWS.
Designated Area (km²)	1.90
Year of Designation	2002
Sampling Points	West Loch Tarbert 37 at Head Mussel Site - NR 84300 66300
Commencement of Monitoring	2003

104.1 Commercial Shellfish Interests

Inner West Loch Tarbert is also designated as a Shellfish Harvesting Area by the Food Standards Agency (FSA) for the production of Pacific oysters (*Crassostrea gigas*).

West Loch Tarbert: Baraualla (Pacific oysters)
2011 = A - April to June, December
B - July to November
2012 = A - January to March

Category A sites are of the highest standard and means that shellfish can go directly for human consumption however category B requires that shellfish must be depurated, heat-treated or re-laid prior to human consumption.

FSA have carried out a sanitary survey for West loch Tarbert.

For more information on Food Standards Agency Classification please visit:
<http://www.food.gov.uk/scotland/safetyhygienescot/shellmonitorscot/shellclassesscot/>

104.2 Bathymetric Information

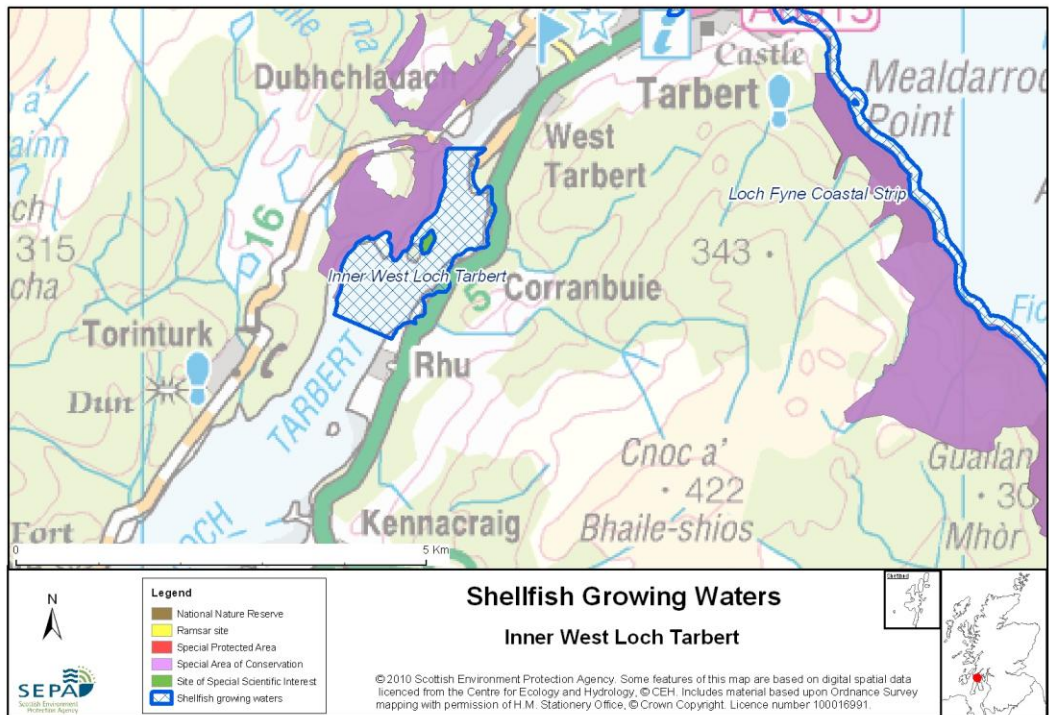
The loch is subject to south and south-easterly winds and has a length of 16km and a maximum depth of 32m. The catchment area is 110km² and it has a salinity reduction of 0.7ppt. West Loch Tarbert has one sill, located adjacent to Eilean Tràighe, with a length of 900m and a maximum depth of 8m. The Head designated area has an approximate length of 3km.

There are no morphological pressures on the waters.

104.3 Conservation Designations

Southwest of Inner West Loch Tarbert is Loup (West Loch Tarbert) designated Shellfish Water ([UKS79923105](#)) this is also designated by the Food Standards Agency (FSA) as a Shellfish Harvesting Area

Special Area of Conservation (SAC) – [Tarbert Woods](#)
Designated 17/03/2005 for Western acidic oak woodland
This is also a **Groundwater Dependent SAC**



104.4 Topography and Land Use – Potential Diffuse Pollution Sources

The land around the designated area is of semi-natural woodland and coniferous plantation, with smaller areas of improved pasture.

There are a number of minor freshwater inputs to the designated area. The largest of which, River Bardaravine is classified by SEPA as being of good quality. The other inputs are not monitored, but are considered to be of at least good quality. bhainn na Cuile provides the main source of freshwater to the head of West Loch Tarbert. This river flows into the Loch immediately up-loch of the designated area and is classified by SEPA as being of fair quality.

The A83 to the south of West Loch Tarbert is the main trunk road to the Kintyre peninsular and is busy with tourists during the summer. This area has a number of tourist developments providing accommodation and other facilities.

The most likely reason for guideline faecal coliform failures (see 104.7 Compliance History below) is diffuse source pollution from either Livestock farming and/or sewage disposal. If this shellfish water continues to fail it may be necessary to carry out bacterial source tracking studies to verify the origin of the diffuse pollution.

104.5 Point Source Discharge

There are no consented discharges directly to the designated area from public sewage systems, industrial operations or private septic tanks. There are a number of consented private septic tank discharges within the catchment area, and there is likely to be a small number of unconsented private discharges of raw sewage or septic tank effluent into the designated water.

There are no marine cage fish farms within the designated area or within a distance of at least 2km.

104.6 Compliance Monitoring Regime

This monitoring regime of the designated area was implemented in July 2005.

Year	Monitoring Regime
2005 -	<ul style="list-style-type: none"> • Quarterly for Sal, DO, pH, temperature, visible oil • Annually for metals and organohalogenes in mussels • Quarterly for faecal coliforms in mussels

104.7 Compliance History

UKS79923104 - Inner West Loch Tarbert				
	Compliance history for Waters and Biota, excluding faecal coliforms data			Compliance history for faecal coliforms
Year	Overall Result	Imperative	Guideline	Guideline
2003	Pass	Pass	Fail	Fail
2004	Pass	Pass	Fail	Fail
2005	Fail	Fail ¹	Pass	Fail
2006	Pass	Pass	Pass	Fail
2007	Pass	Pass	Pass	Pass
2008	Pass	No Data	No Data	Fail
2009	Pass	Pass	Fail ²	Fail
2010	Pass	Pass	Pass	Pass

With the exception of 2007 and 2010, these waters have failed to comply with the Guideline standard for faecal coliforms since 2003.

Samples of water collected in both 2003 and 2004 had Dissolved Oxygen that were below the Guideline standard.

¹Failure relates to a single result for zinc in September 2005 of 10.9 µg/l which marginally fails the Imperative standard of 10 µg/l.

²2009 failure of Arsenic

104.8 Future Monitoring

The monitoring regime (104.6 Compliance Monitoring Regime) will be followed. In the event of any chemistry parameter failing to meet any EQS, the site will be revisited and resampled for the failed parameter.

Samplers are asked to identify any evidence of visible harm to the shellfish population at the site.

104.9 Improvement Actions

There are currently no improvement actions planned for this designated Shellfish Water.

WFD Objectives

Under the Water Framework Directive, the target objectives expect this shellfish water to Pass by 2015 (first River Basin Management Plan Cycle) for Imperative and Guideline Shellfish Growing Water Standards, with high confidence. Target objectives may be revised after the first River Basin Management Plan Cycle if this shellfish water continues to fail.

Objective	First Cycle 2015	Confidence	Second Cycle 2021	Confidence	Third Cycle 2027	Confidence
Imperative Shellfish Growing Waters Standard	Pass by 2015	High	Pass by 2021	High	Pass by 2027	High
Guideline Shellfish Growing Waters Standard	Pass by 2015	High	Pass by 2021	High	Pass by 2027	High

104.10 Summary of Actions

Action	Deadline
No improvement actions currently planned	N/A